

YMCA Heads Together Camp

YMCA Heads Together Camp

For further information contact:

Karen Hutchinson
YMCA Victoria
Heads Together Camp Coordinator
karen.hutchinson@ymca.org.au
Phone : (03) 9403 5000

Our Aim and Funding

Our Aim is to provide opportunities for personal growth, leadership and challenge in order to discover the strength and possibilities that each family and child are capable of. Above all, we aim to create a friendship network of families who can continue to support each other beyond the camp.

Funding has been kindly and generously received from the Kids and Families Foundation, Jack Brockoff Foundation, Fred P Archer Charitable Trust, State Trustees, YMCA Open Doors, TAC and Melbourne City Mission. Individual donations large or small are also appreciated and tax deductible.



YMCA Victoria
582 Heidelberg Road
Fairfield Vic 3078
Phone : (03) 94035000
www.victoria.ymca.org.au/camping



Heads Together, Working Together, Bringing Families Together..

The effects of an acquired brain injury (ABI) can be extremely diverse, yet there is one thing that is common in every family. No matter the severity of the ABI, it impacts the whole family.

Families of children who suffer an ABI are unique. Their child has already developed a personality and a role within the family. Whether the ABI is the result of traumatic or non-traumatic causes, the family has to cope not only with having a severely injured child and the medical and rehab demands associated with the injury, but also cope with the loss of the child they had and adapt to the differences in their child with an ABI.

ABI is a condition that has little public awareness and support. Families of children with an ABI share similar obstacles, including:

- Frustration
- Guilt
- Confusion
- Grief
- Isolation
- Effects of trauma
- Insufficient support and lack of public awareness.



What is an ABI?

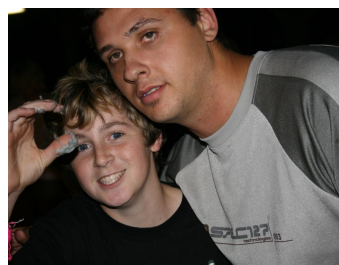
An acquired brain injury or damage to the brain that occurs after birth resulting in changes to a person's ability to think, move, feel or be independent.

Our Camp

The Heads Together Camp is a 3 day residential camp created specifically for families who have a child with an ABI. There are 2 camps a year. "Family" not "ABI" is the focus of the camp and so it is strongly encouraged that the whole family attends. The camp is a unique opportunity for families to come together in a supportive and understanding environment. Families enjoy a jam packed weekend filled with fun, food and activities.

Our Participants

Families from anywhere in Victoria are invited to attend. The main criteria is that the person with an ABI is aged between 3 -18 years, however siblings can be of any age. The camp is restricted to approximately 75 family members and priority is given to new families and early registrations.



"It's an opportunity to share experiences with others who truly understand you and truly care. It's a weekend where it's normal to be different". Ludewig family