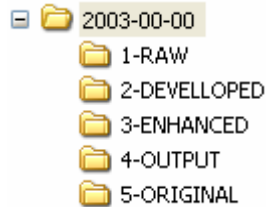
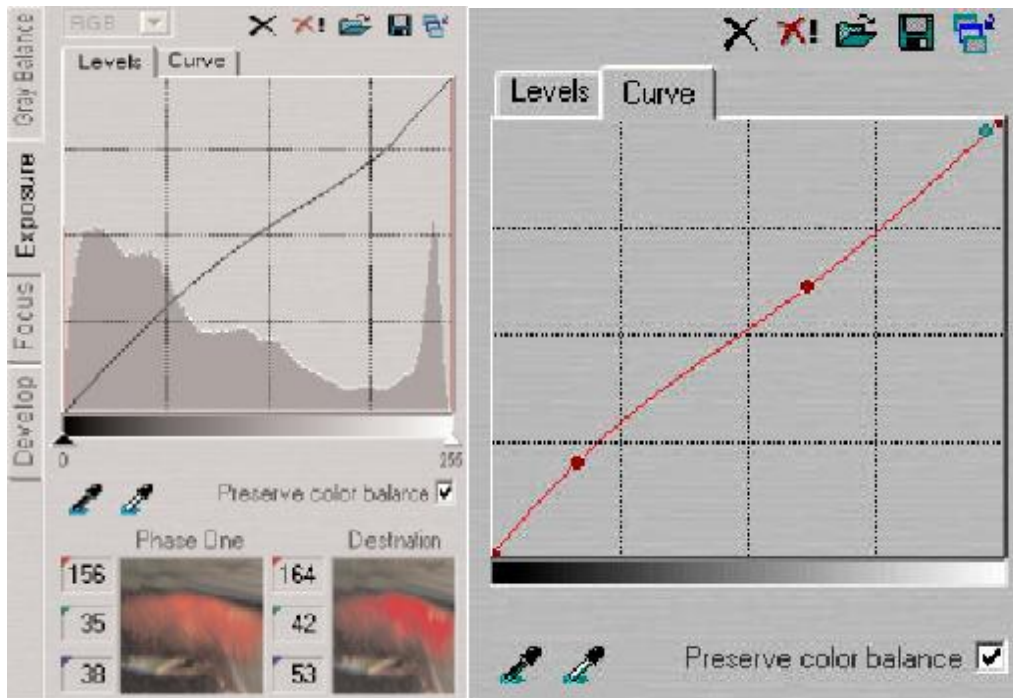


Canon EOS-10D/Canon i950 Workflow

1. Shoot in RAW/sRGB or Adobe RGB (larger gamut) Color Space.
2. Download RAW files to hard drive by either using Breeze Downloader (www.breezesys.com) or using windows explorer. The folders classification is as follow:
 - Year-Month-Day/RAW
 - Use BreezeBrowser and the format of the file is Date_Time_Sequence_Zoom_F-Stop.ext

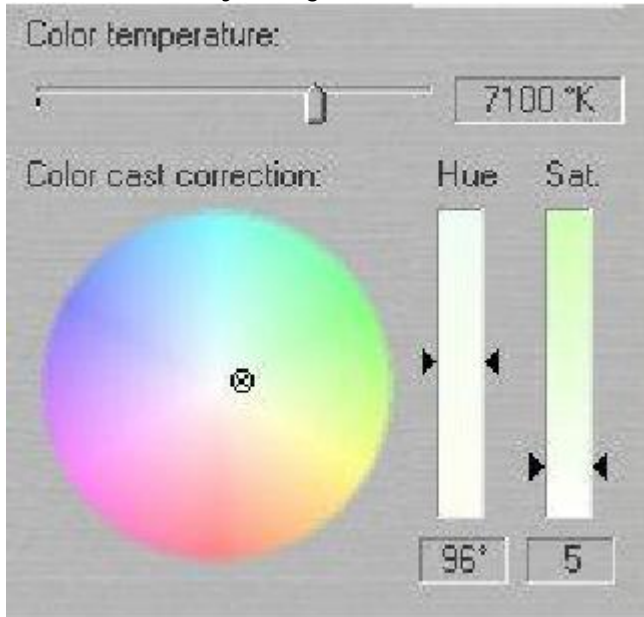


3. Use Capture One DSLR 1.2 (www.plaseone.com) for extract 1-RAW to 2-DEVELOPED
 - 3.1. Set Workflow-> Color Management of Output Destination and Proof Destination to Adobe RGB 1998.
 - 3.2. Enable Monitor Selection to the profile created by adobe gamma.
 - 3.3. Adjust the exposure by making the histogram to have a nice slope/clipping at both ends unless it's a low key or high key picture. And by using curves locate the reference tone by using the loupe and make the reference tone in the middle of the curve.
 - 3.4.





3.5. Adjust the color cast by using the color wheel.



3.6. Process image with no sharpening applied.

3.7. Process Images into Year-Month-Day/2-DEVELOPED (16 bit TIFF)

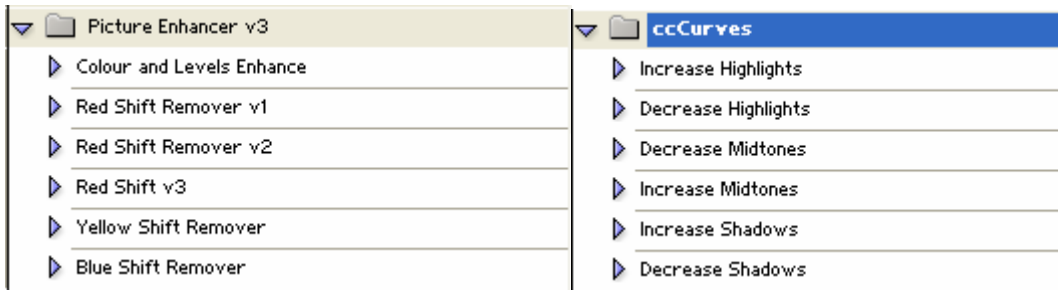
4. If the ISO of shooting is greater than 100, process Image with Neat Image (do not apply sharpening) to remove Noise. If process with neat image, the file will have the _nx appended at the end, so delete the original file if need space (still in 2-DEVELOPED)
5. Apply post correction by running Post Correction (Adobe or sRGB) to Year-Month-Day/3-ENHANCED

EOS-10D MD Custom Workflow
▶ A1-Post Correction ARGB
▶ A2-Post Correction sRGB
▶ B1-Do Output Nik Sharpener
▶ B2-Do Output CSpro
▶ C1-Save Original JP2
▶ Compress File (8 Bit)
▶ Compress File (16 Bit)
▶ Image Enhancement
▶ Image Enhancement ARGB Quick
▶ Image Enhancement sRGB
▶ Image Enhancement (Adobe RGB)
▶ Remove Yellow Cast
▶ Image Enhancement + Brightness
▶ Printing Warm Color
▶ Printing (Auto Contrast)
▶ Printing (Auto Levels)
▶ Printing (Shadow Control)
▶ Printing (Exposure Control)
▶ Gamma Setting (Low)
▶ Gamma Setting (Medium)
▶ Gamma Setting (High)
▶ Gamma Setting (Very High)

▼ A1-Post Correction ARGB
Play action "Image Enhancement (Adobe RGB)" of set "EOS-10D MD Custom Wo..."
▶ Save
▼ A2-Post Correction sRGB
Play action "Image Enhancement sRGB" of set "EOS-10D MD Custom Workflow"
▶ Save
▼ Image Enhancement sRGB
▶ Make snapshot
Play action "Auto Levels" of set "Canon Action Set v3"
Play action "Auto Contrast" of set "Canon Action Set v3"
Play action "Decrease Highlights" of set "ccCurves"
Play action "Increase Midtones" of set "ccCurves"
Play action "Decrease Shadows" of set "ccCurves"
▶ Make snapshot
Play action "saturation +1" of set "10D_workflow_tools"
Play action "saturation +1" of set "10D_workflow_tools"
Play action "brightness +1" of set "10D_workflow_tools"
▶ Make snapshot
▼ Image Enhancement (Adobe RGB)
▶ Make snapshot
Play action "Auto Levels" of set "Canon Action Set v3"
Play action "Auto Contrast" of set "Canon Action Set v3"
Play action "Decrease Highlights" of set "ccCurves"
Play action "Increase Midtones" of set "ccCurves"
Play action "Decrease Shadows" of set "ccCurves"
▶ Make snapshot
Play action "saturation -1" of set "10D_workflow_tools"
Play action "Cooler Color" of set "Canon Action Set v3"
Play action "saturation +1" of set "10D_workflow_tools"
Play action "Warmer Color" of set "Canon Action Set v3"
Play action "brightness +1" of set "10D_workflow_tools"
▶ Make snapshot

6. If the picture still have problem (whatever one don't like) then apply or use any others action to correct picture Manually (still in 3-ENHANCED). If there is a color cast use color mechanics to correct it

- Color and Level/Curve Enhance

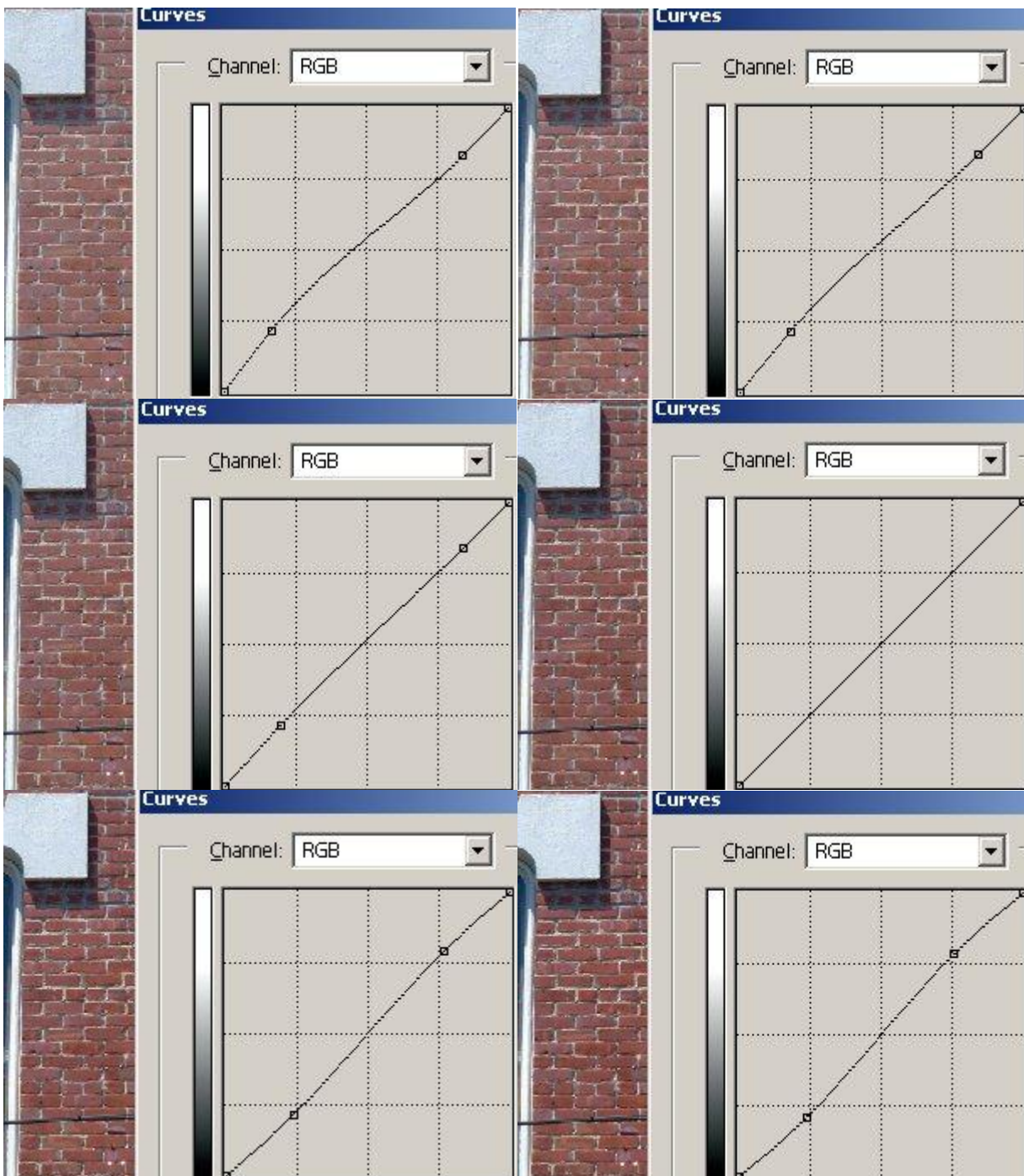


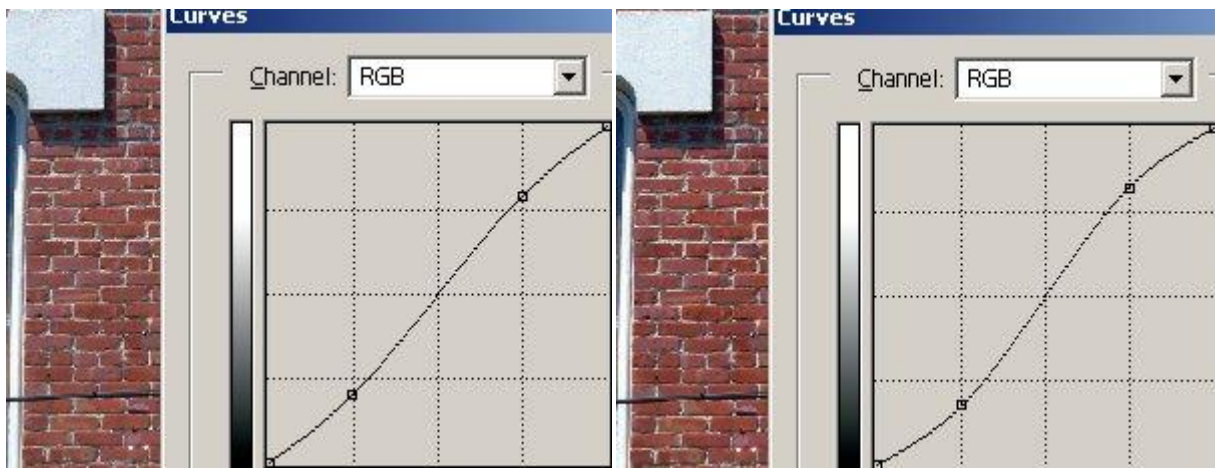
or load curve preset as follow

m2, m1 (m stands for minus contrast and the number for strength)

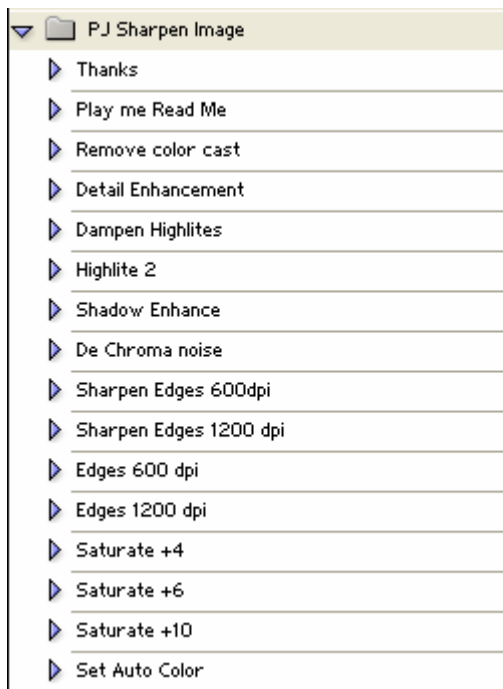
00 no change

p1, p2, p3, p4 (p stands for plus contrast and the number for strength)

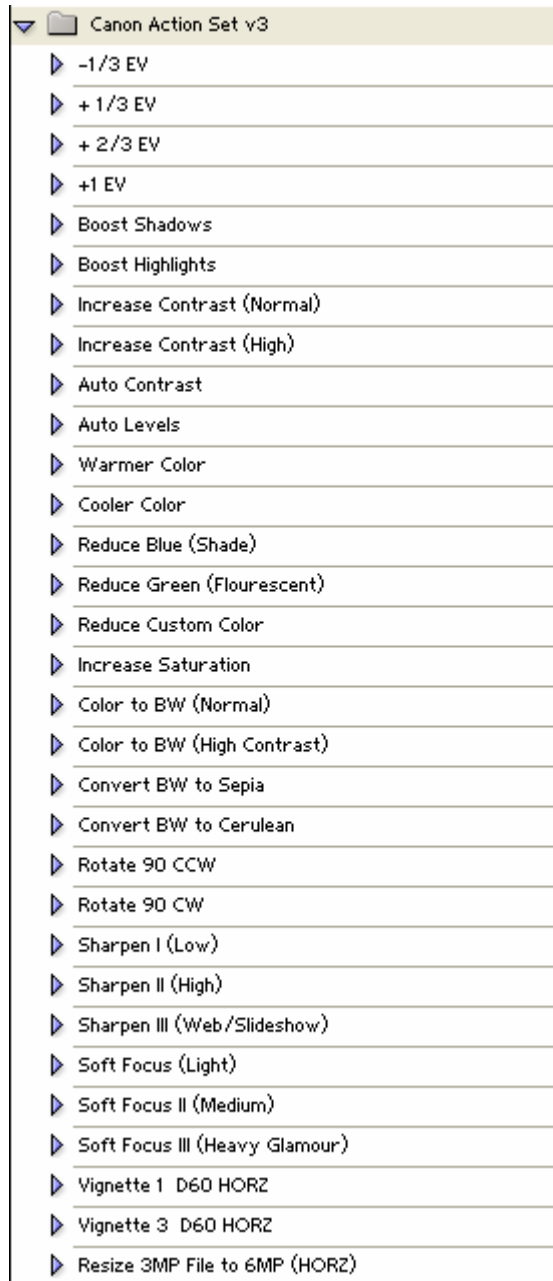
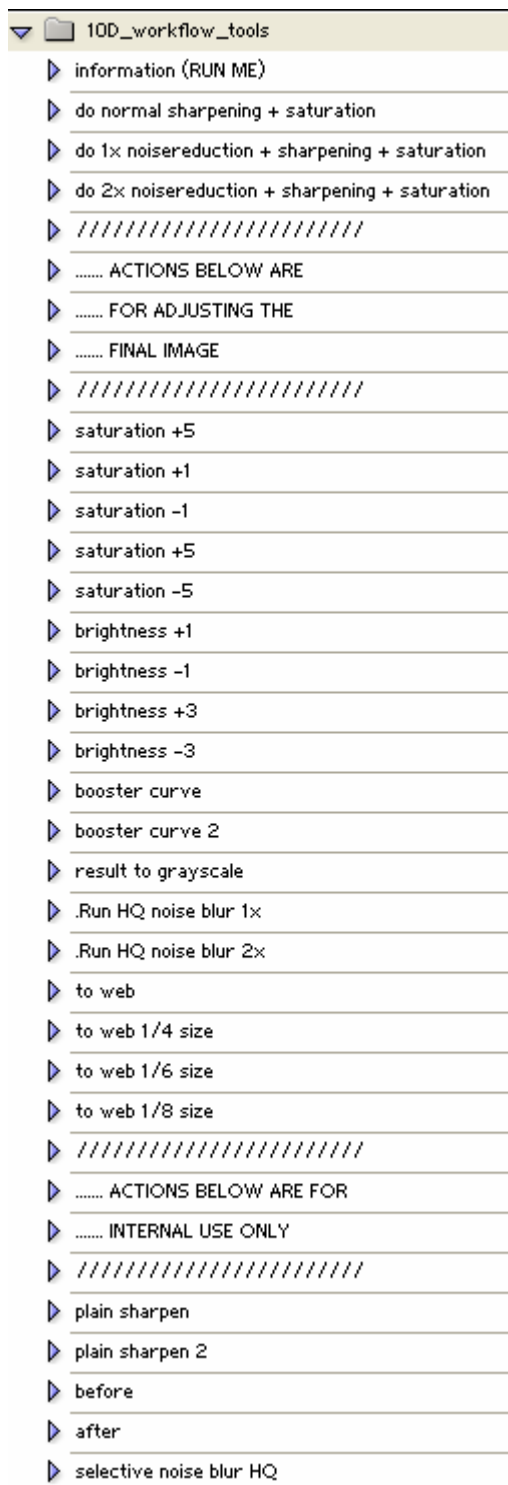




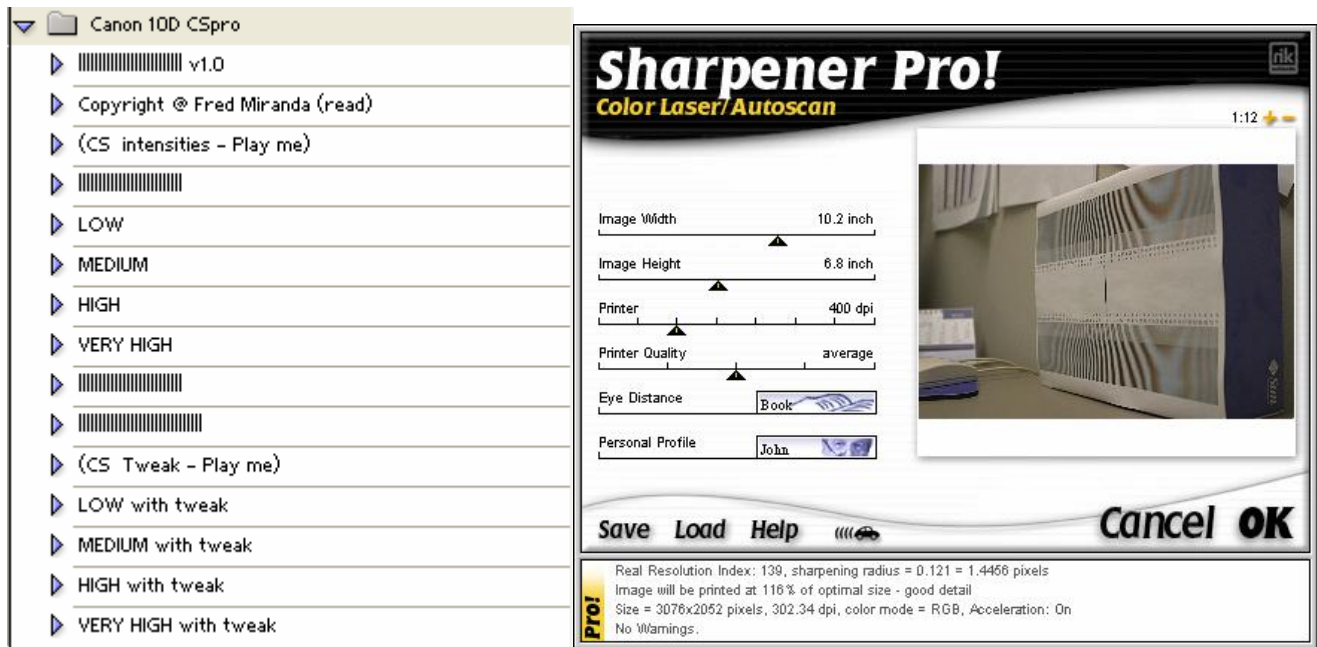
- Flatten Highlights



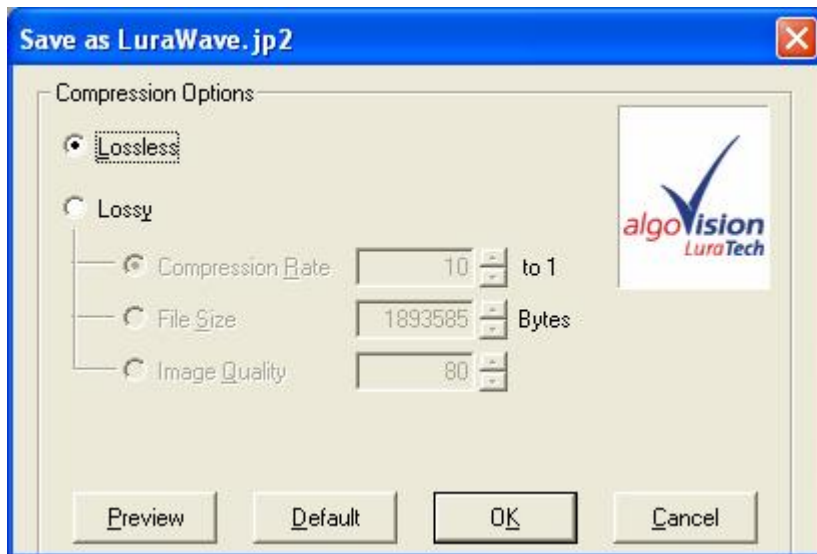
- EV Correction, Highlight, Shadow, Warmer color of Canon Action v3
- Saturation from D10 workflow tools



7. Convert from to 8 Bit and Sharpening (Canon 10CSpro or Nik Sharpener Pro) from Year-Month-Day/3-ENHANCED and save as JPEG in Year-Month-Day/4-OUTPUT (JPEG Quality 12)



8. Compress from Year-Month-Day/3-ENHANCED into Year-Month-Day/5-ORIGINAL as LuraWave.JP2 (8bit or 16 bit)

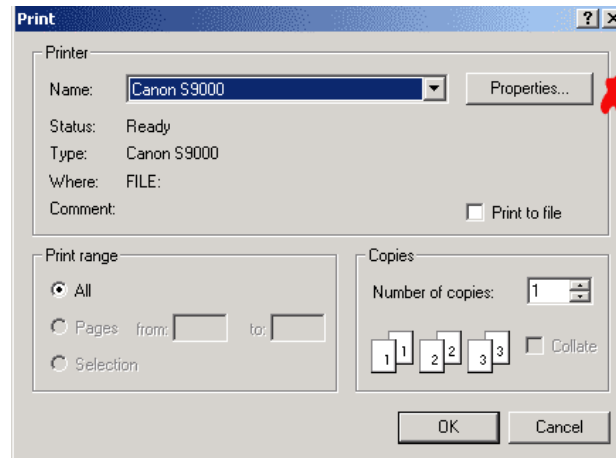


9. Delete Year-Month-Day/2-DEVELOPED and Year-Month-Day/3-ENHANCED Folder
10. Archive to CDROM/DVD
11. Create catalog with Adobe Photoshop Album (Optional)
12. Printing (either from JPEG or PhotoJazz and sharpen it)
 - 12.1. Driver Setup
 - 12.1.1. Start-> Printers and Faxes -> Canon i950
 - 12.1.2. Printer-> Properties
 - 12.1.3. Select color management tab, select manual option and add Adobe RGB (default), Canon ICC, and SRGB

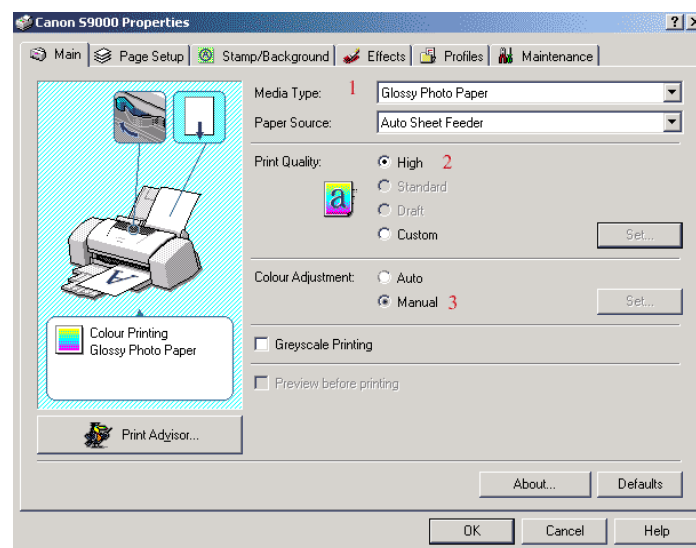
12.2. Photoshop

- 12.2.1. Page Setup with appropriate media type. Printer Setup: select High Quality Print, Color Adjustment to Manual, Preview before print, and Border Print

Press the "Print" (top right hand corner of Print with Preview dialog) button. The following screen-capture shows the **Photoshop 7** print dialog.

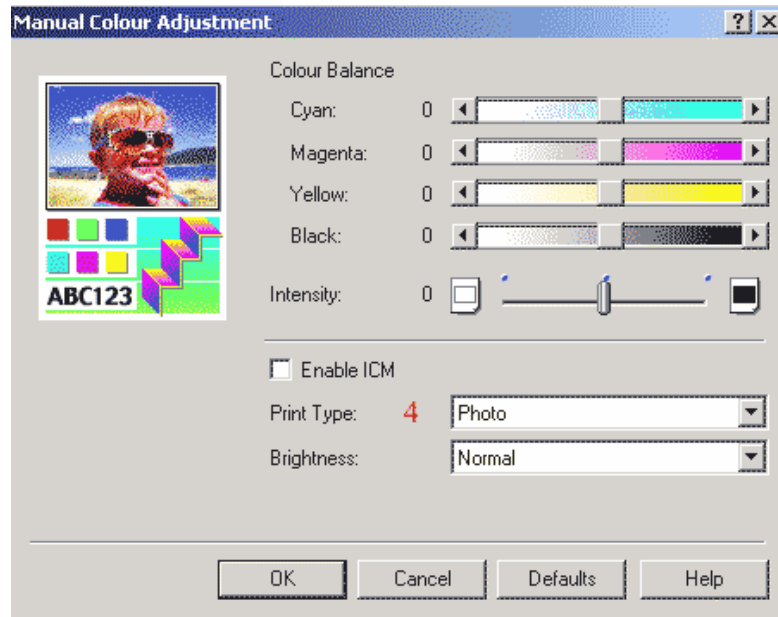


Now press the **Properties** button. Once the Printer driver **Main** window appears choose the type of **Media** (1) that will be used. Choose the highest **Print Quality** (2) option compatible with the printer/media combination that you require. I recommend **High** for photographic type images. **High** quality sacrifices speed, but is worth it. Assuming that you are printing colour images the last setting to choose in this dialog is Colour Adjustment - choose either the **Auto** or **Manual** radio button (3).

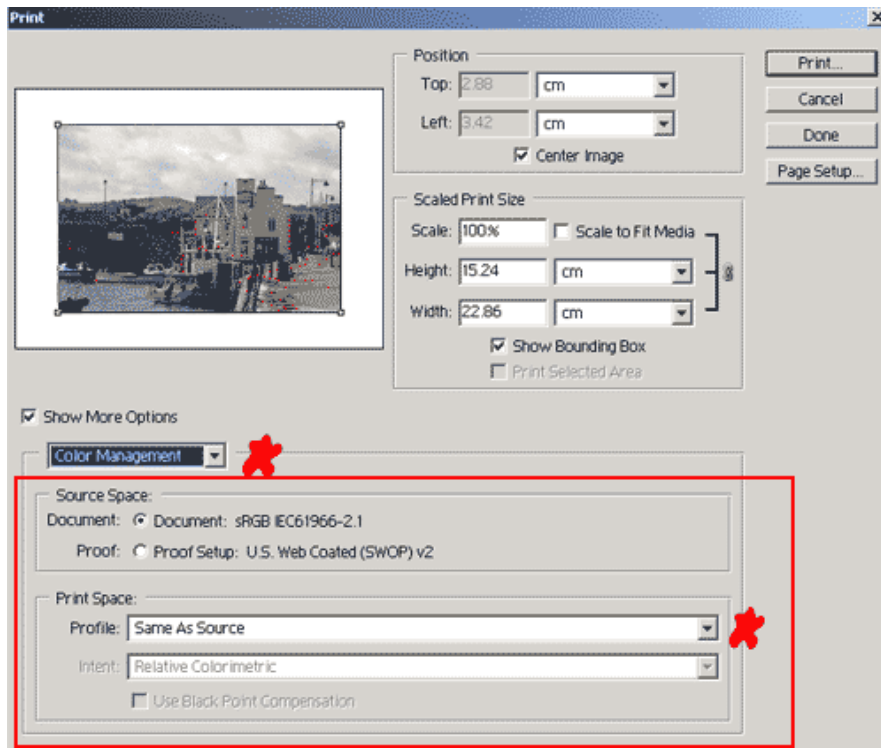


The **Auto** choice is the simplest and probably safest for Photoshop users as it avoids us applying additional and completely unnecessary corrections to our images. If the print is too bright, blue, yellow, whatever - **fix it in Photoshop NOT in the Manual Colour Adjustment dialog**

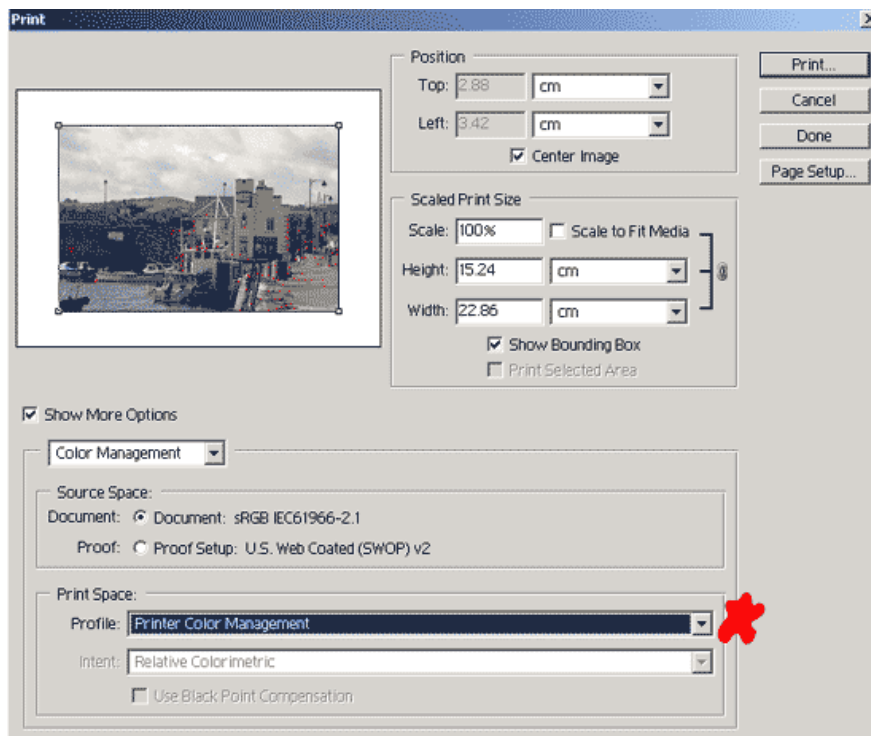
If you do chose the **Manual** radio button you should now have access to the **Manual Colour Adjustment** dialog. There are a number of options available and in the screenshot shown below I have chosen **Photo or Auto (4)** as the **Print Type**. You should read the **Help** file for further information on what each option does to the image.



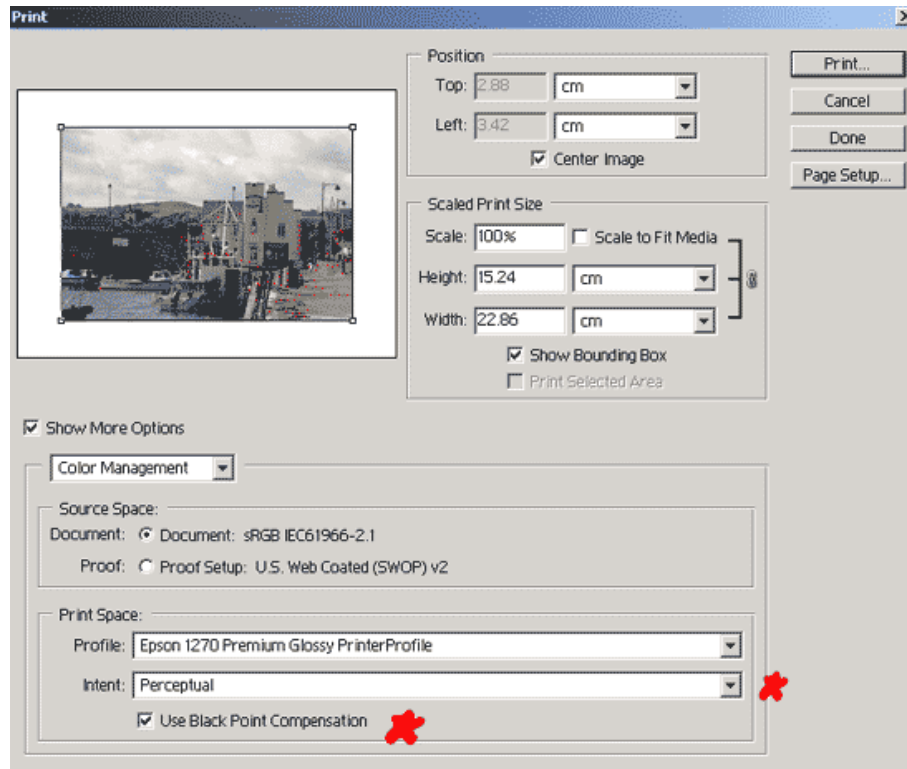
12.2.2. "Same as source" - Photoshop simply passes the image/document straight to the printer driver without making any alterations. Unless you also have chosen **Proof: Proof Setup** option as the **Source Space**. There will be no ICC profile embedded in the image and so this option is effectively telling Photoshop to **NOT** colour manage the process of printing the image/document. Use Enabled ICC in the manual Color Adjustment, this give a overexpose photo with Canon Photo Grossy Plus Paper (beach), so reduce the gamma before printing.



12.2.3. "Printer Color Management": - choosing this option informs Photoshop that the image/document should be sent to printer driver with the profile listed against "Source Space:" embedded within it. By embedding the profile Photoshop is providing the printer driver with all the necessary information required to ensure accurate colour rendering. The image/document colour management is handled on-the-fly and automatically by Photoshop and/or the printer driver. DO NOT Enabled ICC in the manual Color Adjustment, this give a overexpose photo with Canon Photo Grossy Plus Paper (beach), so reduce the gamma before printing.



- 12.2.4. "ICC Profile" (figure 6): - this last option is where we choose a specific profile that is compatible with our printer. Notice that once an ICC profile is selected the "Intent" and "Use Black Point Compensation" (BPC) checkboxes are activated. Generally you'll want to use Perceptual and have BPC checked. DO NOT Enabled ICC in the manual Color Adjustment, this give a underexpose photo with Canon Photo Grossy Plus Paper , so add gamma before printing. If Using Canon Photo Grossy Pro, the exposure is fine.



12.3. Photoshop Album:

- 12.3.1. Same Printer Setup as 5.2.1
- 12.3.2. Print with same setting as "Same as Source" 5.2.2

12.4. QImage:

- 12.4.1. Same Printer Setup as 5.2.1
- 12.4.2. Camera ICC: Adobe RGB
- 12.4.3. Monitor ICC: Profile created by adobe gamma
- 12.4.4. Printer ICC: Canon ICC profile (Windows/system32/spool/drivers/colors)
- 12.4.5. Before Printing Filter Image with: Auto Exposure and Brighten
- 12.4.6. Print with same setting as 5.2.4