

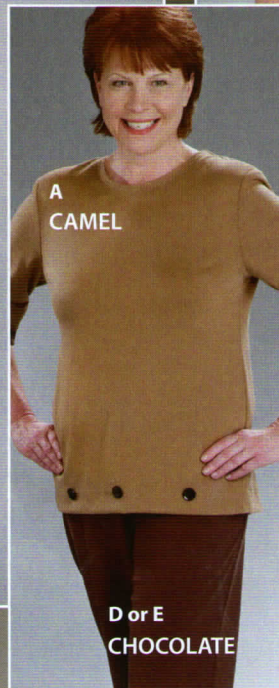
Women's ADAPTIVE Separates

This Season's
Number One Knits



A
RED

D or E
NAVY



A
CAMEL

D or E
CHOCOLATE



B
CHARCOAL

D or E
Pants
Available in
Open Back
or
Open Side

D or E
CHARCOAL

silverts.com
1-800-387-7088



A
MAGENTA

A. Enjoy the Layered Look in One Fabulous Piece. Open back top has two-tone $\frac{3}{4}$ length sleeves and decorative buttons.

- Full overlap with • snaps at shoulders. Winter-weight acrylic knit. Magenta, Red or Camel.

Sizes S, M, L, XL.

#25390. \$47.98

Sizes 2XL, 3XL.

#25391. \$52.98

B. Make a Splash in this Stylish Open Back Top. Colourful trim highlights the v-neck and cuffs. Side vents for an easy, comfortable fit.

- Full overlap with • snaps at shoulders and • neck. Winter-weight acrylic knit. Charcoal, Wine or Brown.

Sizes S, M, L, XL.

#25400. \$47.98

Sizes 2XL, 3XL.

#25401. \$52.98



NEW



C. Surprise Everyone in this Open Back Top, that's so stylish it's hard to believe it's adaptive.

- Beautifully embellished with a sunburst of color matched beads.
- Full overlap with • two snaps at each shoulder. Acrylic knit with ribbed trim. Coral or Periwinkle.

Sizes S, M, L, XL.

#27060. \$49.98

D-E. Enhance Your Wardrobe with the Perfect Pants for Fall and Winter. Made of winter-weight knit, they're comfortable, warm and adapted for easy self or aided dressing.

- Polyester blend. Black, Chocolate, Charcoal or Navy.

D. Open Side Knit Pants.

- Fold down front panel with • VELCRO® closure. • Elastic waist, • side pockets.

Sizes S, M, L, XL.

#23120. \$42.98

E. Open Back Knit Pants.

- Two overlapping back panels close in the middle with • adjustable snaps. • Elastic waist.

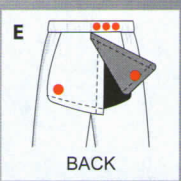
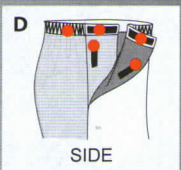
Sizes S, M, L, XL.

#23110. \$42.98

Sizes 2XL, 3XL.

#23111. \$46.98

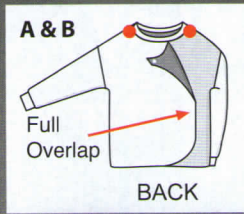
Also sold on pg 6.



- NAVY
- BLACK
- CHARCOAL
- CHOCOLATE

D or E
CHOCOLATE

D or E
BLACK



Knit Winter Weight



BEST SELLER



MIX & MATCH



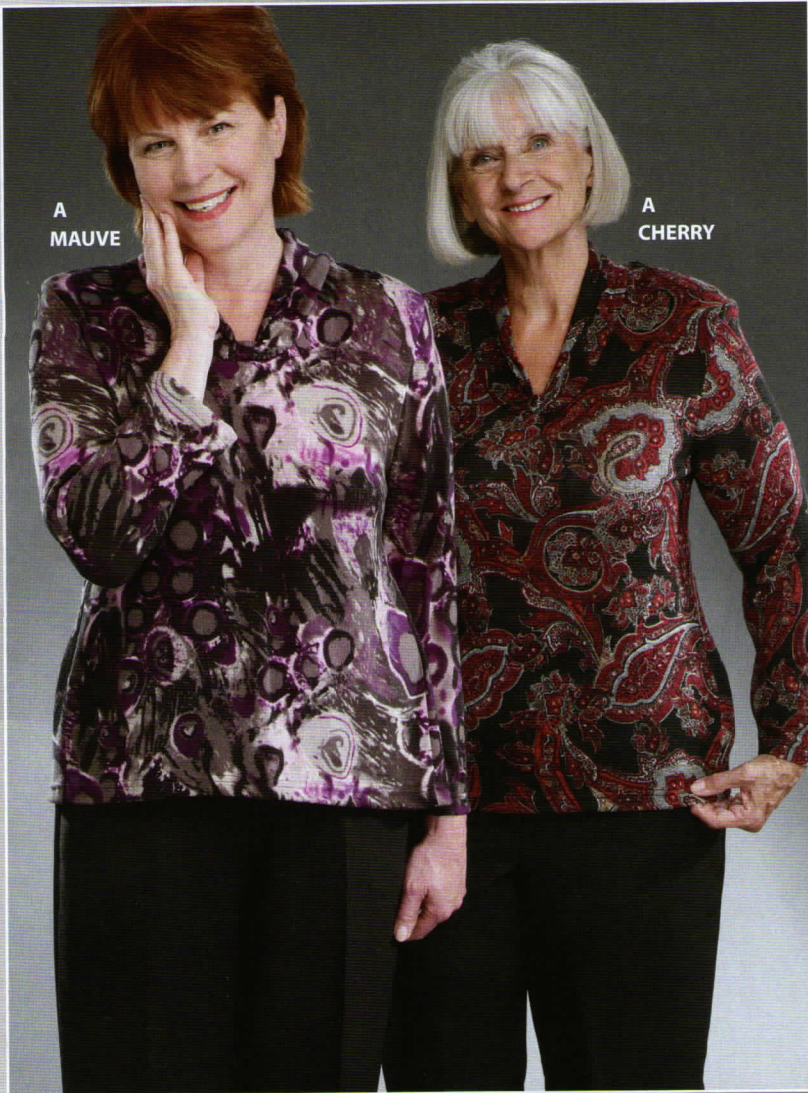
- DEEP PURPLE
- DARK DENIM
- CHOCOLATE
- HEATHER GRAY
- BLACK
- TEAL
- NAVY
- COFFEE
- TAUPE

Open Side or Open Back

GABARDINE

Anyway You Mix Them, They Always Match

WOMEN'S ADAPTIVE SEPARATES



A
MAUVE

A
CHERRY



A
RED



KNIT

GABARDINE

B BLACK

B CHARCOAL

C HEATHER
GRAY

C BLACK



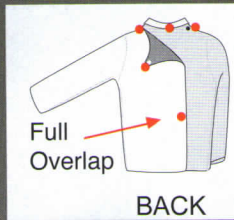
KNIT

GABARDINE

B BLACK

C BLACK

Women's ADAPTIVE Separates



A
RED

A
MONET



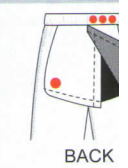
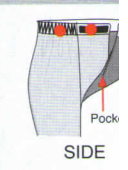
KNIT

Knit & Gab
Pants
Available in
Open Side
or
Open Back

A
PLUM
PAISLEY



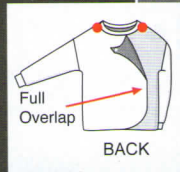
Pant
shown
sold on
pg 7 & 8



GABARDINE

A. Pretty Print Open Back Top goes beautifully with your favourite pants. Styled with a shawl collar and decorative buttons. ● Full back overlap with ● two snaps at each shoulder and ● one at neck. Super soft polyester-spandex. Red, Monet or Plum Paisley.

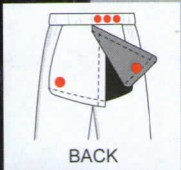
Sizes S, M, L, XL. #23040. \$39.98
Sizes 2XL, 3XL. #23041. \$44.98



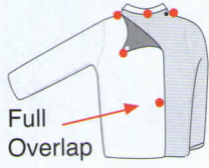
NEW

Women's 2pc ADAPTIVE Sets

B. Classy Meets Comfortable, can be worn anywhere. The open back top features an attached print scarf and decorative buttons. Side vents for a comfortable fit. • Full back overlap with • two snaps at each shoulder. Open Back Pants have • two overlapping back panels that close in the middle with • adjustable snaps. • Elastic waist. Open cuffs. Soft polyester-spandex blend. Navy, Charcoal or Purple.
Sizes S, M, L, XL. #25410. \$89.98
Sizes 2XL, 3XL. #25411. \$92.00



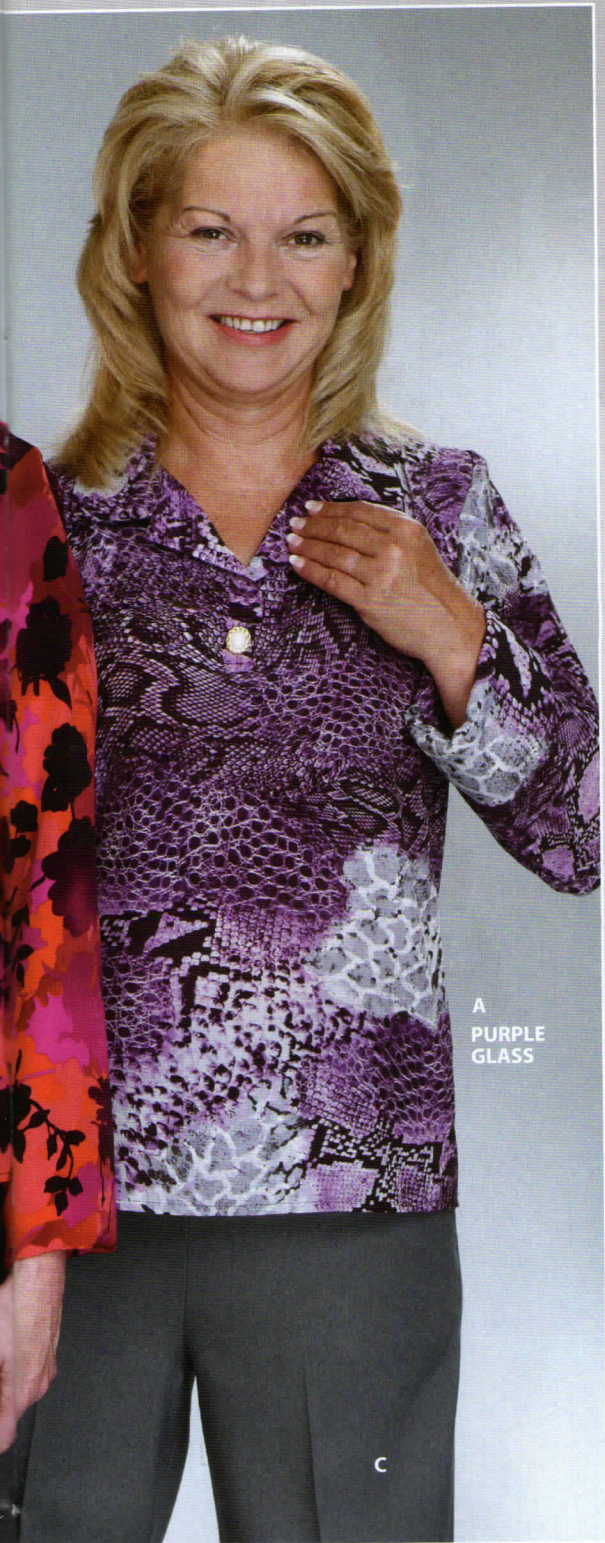
**Silvert's
Rewards**



Full Overlap

BACK

Everything Coordinates so Loved Ones Can Always Look Good



A
PURPLE
GLASS

C



A
GREY /
BEIGE

A
BLACK /
GREY

B or C

B or C



C
HEATHER
GRAY

B or C
BLACK

GABARDINE

KNIT or
GABARDINE



B or C
BLACK

C
HEATHER
GRAY

C
TAUPE

C
HEATHER
GRAY

B
CHARCOAL

KNIT or GABARDINE

KNIT

B CHARCOAL

GABARDINE

KNIT

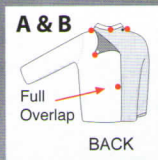
Women's ADAPTIVE Wear



A. Go-With-Anything Open Back Blouse. Looks great worn loose or tucked in. ● Full back overlap with ● snaps at shoulders and ● one snap at neck. Polyester. Denim/Black, Red/Black, Coffee/Black, Black/Grey, Grey/Beige, Purple Glass, Blue Abstract, Denim, Lilac Abstract or Assorted Prints. **Sizes S, M, L, XL. #23140. \$42.98** ♿
Sizes 2XL, 3XL. #23141. \$46.98
Also sold on pg 12.

B. Fooler Open Back Blouse looks like a two-piece but the shell is sewn in for one-piece convenience. Can be worn open or buttoned up. Comfortable shirred, ● ¾ length sleeves. ● Full back overlap with ● snaps at shoulders and ● neck. 100% polyester. Blue, Red or Leopard. **Sizes S, M, L, XL. #24230. \$49.98** ♿

C. Arthritic-Friendly Skirt is ideal for women in wheelchairs or with limited dexterity. ● Band waist wraps around and fastens with ● adjustable VELCRO® tabs. Polyester gabardine. Black, Navy, Coffee, Dark Denim or Assorted. **Sizes S, M, L, XL. #23010. \$34.98** ♿
Sizes 2XL, 3XL. #23011. \$37.98



A
COFFEE /
BLACK

B
RED

FOOLER
BLOUSE



CHOCOLATE

Pants
Available in
Open Side
or
Open Back

C
COFFEE



B
LEOPARD

B
BLUE

Pants
sold on
pg 7 & 8

Women's ADAPTIVE 2pc Sets

D-F. Three Stylish Ways to Enjoy Brush-Lined Terry Looper. Polyester. Teal, Dyed Red or Navy.

D. V-Neck Open Back Top with attached insert. • Full back overlap with • two snaps at each shoulder.

With Open Side Pants. • Front fold down panel • side fastening VELCRO® strips, • elastic waist.

• Side pockets. ♿ ♿
Sizes S, M, L, XL. #25360. \$87.98

With Open Back Pants. • Two overlapping back panels close in the middle with • adjustable snaps.

• Elastic waist. ♿
Sizes S, M, L, XL. #25060. \$87.98
Sizes 2XL, 3XL. #25061. \$92.00

E. Buttoned and Embroidered Open Back Top. • Full back overlap with • snaps at shoulders and • neck. ♿

With Open Side Pants. • Front fold down panel with • side fastening VELCRO® strips. • Elastic waist.

• Side pockets. ♿ ♿
Sizes S, M, L, XL. #25030. \$89.98

With Open Back Pants. • Two overlapping back panels close in the middle with • adjustable snaps.

• Elastic waist. ♿
Sizes S, M, L, XL. #25000. \$89.98
Sizes 2XL, 3XL. #25001. \$95.00

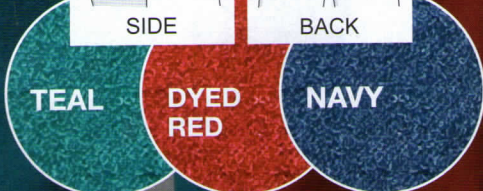
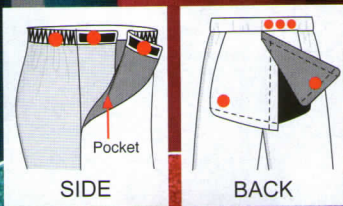
F. Stylish Shawl Neck Open Back Top. • Full overlap with • two snaps at each shoulder and • one at neck. ♿

With Open Side Pants. • Front fold down panel with • side fastening VELCRO® strips. • Elastic waist.

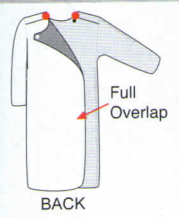
• Side pockets. ♿ ♿
Sizes S, M, L, XL. #25380. \$86.98
Sizes 2XL, 3XL. #25381. \$89.98

With Open Back Pants. • Two overlapping back panels close in the middle with • adjustable snaps.

• Elastic waist. ♿
Sizes S, M, L, XL. #25370. \$86.98
Sizes 2XL, 3XL. #25371. \$89.98



**SUPER
SOFT
BRUSHED
TERRY**



C
PINK
ROSE

C
BLUE
STREAM

X



Save with
2 Pk on
Back Cover

C. Ribbon-Trimmed Nightgown has a full back overlap with two snaps at each shoulder. Warm cotton flannelette. Blue Stream, Pink Rose or Assorted Prints.

Sizes S, M, L. #26050. \$34.98
Size XL. #26051. \$36.98
Size 2XL. #26052. \$37.98

Not shown same as 'C' but in polyester-cotton broadcloth.

Sizes S, M, L. #26250. \$34.98
Size XL. #26251. \$36.98
Sizes 2XL, 3XL. #26252. \$37.98

Also save with a 2 pk shown on Back Cover. #26090. from \$59.95

D. This Feminine Lace-Trimmed Nightgown is lovely enough for lounging around. Full back overlap with snap closure at each shoulder. Warm cotton flannelette. Assorted Prints.

Sizes S, M, L. #26220. \$42.98
Size XL. #26221. \$44.98
Size 2XL. #26222. \$45.98

Not shown same as 'D' but in polyester-cotton broadcloth.

Sizes S, M, L. #26020. \$42.98
Size XL. #26021. \$44.98
Sizes 2XL, 3XL, 4XL. #26022. \$45.98

E
NAVY

BED
JACKET

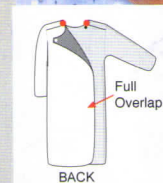
- PLUM
- RED
- VIOLET
- STEEL BLUE
- BLACK
- CANDY FLOSS

E. Bed Jacket in ultra-soft polar fleece. Hugs your shoulders with just the right amount of warmth. Fastens with a stylish button. Red, Steel Blue, Violet, Candy Floss, Navy, Black or Plum.

One Size. #30290. \$44.98

Also sold on pg 2.

D



- BORDEAUX
- PERIWINKLE
- CREAM
- ROSE



Silvert's

Adaptive Clothing & Footwear

HEAD OFFICE & WAREHOUSE OUTLET STORE :

3280 Steeles Ave. West, Suite 18
Concord, Ontario L4K 2Y2

TELEPHONE (905) 738-4545
TOLL FREE 1-800-387-7088
FAX..... (905) 738-6236

CANADA	POSTES
POST	CANADA
Postage paid Addressed Admail	Port payé Médiaposte avec adresse
129-2390	



We are proud to say that most of our merchandise is Canadian made.
Printed in Canada
E. & O.E. 06/10/12

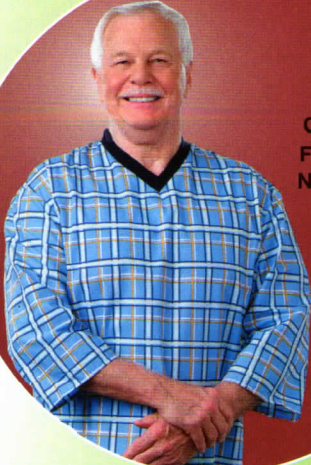
Catalogue français disponible. Gratuit!

www.silverts.com

To order call 1-800-387-7088

PICK A GIFT

Show Loved Ones
How Much
They're Cared For



Men's Open Back Flannelette Nightgown.
#50120.
\$37.98
Sold on pg 39



Women's Cardigan.
#13260.
\$44.98
Sold on pg 27 & 29



6 Pk of Slipper Socks.
#19150. \$29.98/6 pairs
Sold on pg 26, 33, 42



Women's Adaptive Nightgown Value 2Pk.
S, M, L. #26090. \$59.98
XL. #26091. \$62.98
Sold individually as #26050 on pg 23



Slipper Socks.
#19140. \$6.98/Pair
Sold on pg 33, 42.



3Pk of Slipper Socks. #19210.
\$19.98/3 pairs
Sold on pg 33



Polar Fleece Bed Jacket
#30290
\$44.98
Sold on pg 22, 23



Value Priced Open Back Top
#24700.
\$29.98
Sold on pg 6

