



# LCHA Roundup

www.larimerhorseman.org

LARIMER COUNTY HORSEMAN'S ASSOCIATION

January, 2012

## When Do I Call a Vet?

### January Meeting

Thursday, January 5, 2012

7 to 9 PM

McKee 4H Building, at the Ranch



While you are feeding your horses one cold morning, your normally voracious gelding turns up his nose at the morning rations and walks off to stand by himself in the corner of the paddock. Should you "wait and see," or is this a situation requiring immediate veterinary attention?

You take off your mare's fly mask to discover that her eyelids are puffy and her eyes are weeping. Is this an urgent problem?

Having horses means that you will frequently be presented with situations where you need to decide whether the horse requires veterinary attention, and if so, whether it is an emergency. As any experienced horsemen will attest, for being such large and strong creatures, horses are surprisingly susceptible to injury and medical issues, some of which require immediate veterinary attention for optimal treatment.

Dr. Stephanie Brault of Equine Veterinary Services of Northern Colorado, PC, will discuss common equine emergency medical problems and tips for determining how to address them. She will cover a broad range of issues that concern horse owners, giving us many examples, symptoms, and cases to help us determine when we should call for veterinary help. Dr. Brault is a graduate of the University of California, Davis, School of Veterinary Medicine and a board-certified large animal internal medicine specialist (Diplomate of the American College of Veterinary Internal Medicine).

Don't miss this important presentation, unless, of course, you are always absolutely sure of when to call -- or not call -- your veterinarian when your horse has a problem.

## Planning Activities for 2012



Hi everyone it's that time of the year again. We start thinking about where we want to go riding this next summer, and what other LCHA activities we want to participate in. Now, I know it's not even spring yet; it's still winter, but in order to provide all the fun and exciting activities the club hosts, we need to come up with the schedule now.

So be thinking of all the places you would like to ride, days you would like to ride, and times you would like to ride. Be thinking of other activities you would like (for example, what would you like to do to celebrate LCHA's 40th anniversary). When you have ideas, please feel free to let me know, and your input will be heard.

Remember these activities are for you, the members: Who better to pick the rides and other activities? Your thoughts are important. No idea is too small – it may serve as the beginning of a great event for everybody. No idea is dumb. To paraphrase: "The ONLY dumb idea is the idea that never gets expressed."

See "Planning" on page 3

## In this month's issue . . .

When Do I Call a Vet?.....	page 1
Planning Activities for 2012.....	page 1
Equine Dentistry: How to Preserve Teeth for Old Age.....	page 3
The First Weekend of December.....	page 3
Navigating Your Newsletter (If you read it online).....	page 4
Calendar of Events.....	page 6
CLASSIFIED ADS.....	page 6
The Card Shop.....	page 8

Paid Advertising

# ***Come on Down!*** **Feed, Minerals and Tack** **10%** *off*

Discount applies to current members of the  
Larimer County Horseman's Association.

*You'll Love Our Quality!*  
*Feed is made Made Fresh Daily*  
*Here at the Mill.*



546 Willow St., Downtown Fort Collins  
970 482 1662 Ranch-Way.com  
M-F 7-5:30, Sat 7:30- 1pm



*Planning*

To set up the year's activities, we have a planning meeting:

- Thursday,
- January 26, 2012
- 7 PM to as late as 9 PM
- Estes Park Room at the McKee (4H0 Building at the Ranch)



You are invited! So come on out and join us to help plan the activities for LCHA's 2012.

The meeting will include current and prospective trail ride leaders, trail maintenance leaders, people who set up training sessions, people who set up fun events (for example, the annual picnic, Christmas caroling, and Christmas party), and anyone with suggestions for events in 2012.

Again it's YOUR input that I am looking for to help build another great season. So come on out and share your suggestions.

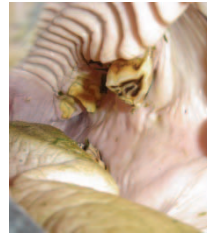
Also, bring along one of your favorite desserts to share, and we'll all have a great time enjoying the desserts while planning 2012.

Feel free to contact me at any time: Ted Newport Jr. (T.J.) at (970) 397-6986 or by email at [tednewportjr@live.com](mailto:tednewportjr@live.com).

***Ted Newport Jr.***  
***Larimer County Horseman's Assoc.***  
***Trail Ride Coordinator/Webmaster***

## *Equine Dentistry: How to Preserve Teeth for Old Age*

### *February LCHA Meeting*



Did you know that 60% of horses over 15 years of age have painful periodontal disease and 79% have infundibular cavities (what the heck is an infundibulum, anyway)?

When do horses start having dental problems and when do the teeth wear out? What can we do to keep the teeth healthy and comfortable?

Drs. Jim and Patty Latham of Mill Creek Veterinary Service in Fort Collins will be discussing the fine points of dental exams and therapies in older horses. The Lathams owned and operated practices in Napa, California, and Pagosa Springs, CO, for 36 years. They are currently teaching the equine dentistry curriculum at CSU's College of Veterinary Medicine and seeing dental cases throughout the northern front range and in Pagosa. They invite you to visit their website at [www.lathamdvm.com](http://www.lathamdvm.com).

## *The First Weekend of December*

Good news and bad news.

### *Bad News First*

We had to cancel the Christmas Caroling on Horseback. According to Kay Thomson, who has been involved with this activity 17 years, it was only the third time we have had to cancel. Why we canceled (in case you missed the email that went to the club):

Reason #1 – icy town streets (not safe for man or beast)

*See "Bad News" on page 4*

### *Bad News*

- Forecasted snow
- Very cold (high about 25 °F)
- Gusty breeze to make it feel even colder

I'm sorry we had to cancel. I'm sorry we have no descriptions of an exciting day. I'm sorry we have no pictures of horses or riders, or both, decked out for Christmas. I'm sorry we did not have the enjoyment of chatting while munching on cookies, brownies, fudge, or whatever other goodies people brought to share.

We usually have good weather and we usually have good fun when Christmas Caroling on Horseback.

Oh, well. Next year.

### *Good News*

We had a great time at the LCHA Christmas party. Held at the Best Western Coach House Inn in Loveland (I25 and US 34), it started out with a meet and greet, then progressed to dinner:

- salad
- lasagna
- chicken alfredo over linguini
- mixed vegetables
- chocolate lava cake or key lime pie.

Yum. The food was good, and plentiful.

After dinner, we had the obligatory period of announcements, one of which was Hugh Templeton awarding Trail Minder T-Shirts to those who earned them by attending at least two trail maintenance trips in 2011:

- Mary Detweiler
- Stacy Geer
- Susan Kurzweil
- Marianne Mitchell
- Ted Newport
- TJ Newport
- Gary York
- Hugh Templeton

Mark Reinke earned his T-shirt, but did not attend the meeting. He'll get his shirt later.

When Hugh finally finished, our hostess for the evening – Susan Kurzweil – took over. Susan had a series of word games for us to play. The first games were brain teasers. For example, a quick crossword puzzle using horse terms, a series of scrambled words that, when unscrambled, were all horse words, and so forth. Most of the games were timed; the winner had the highest count of words within the time limit.

Then we played Bingo – three simple games and a fourth game in which a Bingo required three horizontal rows. The rows needed to be first, third, and fifth on the Bingo cards. It

took a while, and our caller (Bonnie Templeton) nearly ran out of letter/numbers to call, but eventually someone won (several of us were within a number or two of finishing the Bingo).

Each game winner received a prize. All the games prompted laughter and good fun.

The party, attended by 28 people, went well and was a success, with lots of laughs and companionship. Thank you to Susan for arranging the party and coming up with creative ways to have fun together. Thank you to Bonnie Templeton, who helped with this event, to Silja Knoll who put together the beautiful slide show, and to TJ Newport who demonstrated a new look for the LCHA web site.

If you weren't there, you missed a great evening! Maybe next year?

If anyone has any suggestions on what they'd like to do for next year's Christmas party, please pass them on to a Board Member or attend one the Board Meetings, which are held on the third Thursday of every month at 7 pm.

## *Navigating Your Newsletter (If you read it online)*

---

Many of you receive this newsletter in printed format. If so, you see two columns. If an article is too big for one column, it continues at the top of the next column or at the top of the next page. To navigate through articles, it is easy to adjust to the new location to continue reading an article: Just look up at the next column or turn the page. Right?

If you read this newsletter online, you see two columns. If an article is too big for one column, it continues at the top of the next column or at the top of the next page. Sound familiar? Sure. It is the same presentation as in the printed version.

However, since the online newsletter is in a PDF (portable document format) file on your computer, you have another easy way to navigate through articles. Here are some tips.

*See "Going Directly" on page 5*

### Going Directly to an Article

On page 1, you'll find an "In this month's issue ..." box in the lower right corner. It is a Table of Contents for the issue. You can go directly from to the start of any article listed in it:


- Select the article you want to read by moving your mouse pointer over the article title until the pointer changes to a hand shape with the first finger pointed upward.
- Click once.

Your computer should display the beginning of the article you selected.

This is great feature for when you want to check the date for the next trail maintenance date or the next trail ride. Or perhaps you want to show your spouse a great article you think they would like. You can navigate right to it.

### Return to Page 1

To return from the end of the article to the first page,

- Move your mouse pointer to the "first page" icon at the bottom of the screen (  )
- Click once.  
Your computer should return to page 1.

### Scrolling Through an Article

A couple of folks have mentioned to me that they would prefer not to scroll from the end of one column to the top of the next column so that they can continue to read an article. They would also prefer not to need to scroll to move from the end of one column to the top of the next page (really?). So I am going to try to make that easier.

- If an article breaks at the end of a column, a continuation line appears; for example, See "Bad News" on page n.
- Click once.  
The computer should jump to the point at which the article continues.

This should make it easier for you to follow articles from the end of one column to wherever it continues. Who knows, an article may continue a page or two later. Using this feature, you can follow it anywhere.

If you don't like these changes, let me know. I'll be glad not to do the extra work it takes to set the continuations up. If you have questions about these changes, let me know. I'll do my best to help. If you like these changes, let me know. Positive reinforcement always feels good.

**Hugh Templeton**  
Editor, LCHA Roundup

**LCHA Roundup is a newsletter of the Larimer County Horseman's Association (LCHA), P.O. Box 270375, Fort Collins, CO 80527-0375.**

Editor: Hugh Templeton, 970-622-0982  
hught@lpbroadband.net

**The LCHA Board of Directors:**

President, Kim Andrews ..... 970-613-0121  
 Vice President, Gary York ..... 970-203-0144  
 Secretary, Susan Kurzweil, ..... 970-663-6738  
 Treasurer Gary York..... '970-203-0144  
 Immed Past Pres.

**Committee Managers and Members at Large:**

TJ Newport, Web Master, Trail Ride..... 970-397-6986  
 Ted Newport Member At Large..... 970-397-9591  
 Hugh Templeton, Emergency Evacuation ..... 970-622-0982  
 Butch Kasubick Program..... 970-568-9102  
 Toni McConnell, Membership ..... 970-217-0287  
 Bonnie Robinson, Member At Large ..... 970-217-1113  
 Bonnie Templeton, Member At Large..... 970-622-0982

LCHA Roundup thanks the following persons for their contributions:  
 Rachael Cohen— preparing the newsletter for mailing.

If you have ideas, comments, or questions about LCHA, horses, the horse industry in Larimer County, or this newsletter, send them to the editor.

# Calendar of Events

## Events in 2012

Date	Day	Event	Location	Contact	Time
Jan 5, 2012	Thurs	<b>When To Call a Vet:</b> Stephanie Brault, DVM	McKee 4 H Buliding The Ranch	Butch Kasubick, 970-568-9102	7 to 9 PM
Jan 26	Thurs	<b>PLanning Meeting for 2012 Activities</b> (Rides, etc)	Estes Park Room McKee 4 H Buliding The Ranch	Ted Newport Jr. (T.J.) at (970) 397-6986 or email <a href="mailto:tednewportjr@live.com">tednewportjr@live.com</a> .	7 to 9 PM
Feb 2	Thurs	Equine Dentistry Patty Latham, DVM and Jim Latham, DVM	McKee 4 H Buliding The Ranch	Butch Kasubick, 970-568-9102	7 to 9 PM
Mar 1	Thurs			Butch Kasubick, 970-568-9102	7 to 9 PM
April 5	Thurs	<b>How To Regain Your Saddle in Different Situations</b> Kristin Schuett	Gilnocky Equestrain Center	Butch Kasubick, 970-568-9102	7 to 9 PM
May	Thurs	<b>Saddle Fitting</b> Danna Galden		Butch Kasubick, 970-568-9102	7 to 9 PM

## CLASSIFIED ADS

**For Sale** Hand tied rope halters with lead rope. All sizes – from pony to draft. I can do halters for llamas also. Choose the color you want. A single halter and lead costs \$20. For multiple halters, call for pricing. Call Ted Newport Jr. (T.J.) 970-397-6986

**For Sale** Nice group of kind, gentle, and nice looking horses for sale, professional training, age 2 and up. See them on our web site @ [www.Bridle-Bit.com](http://www.Bridle-Bit.com)  
Also – Individual lessons, clinics, training from start to finish. Call 970-454-3061 or visit our web site at [www.Bridle-Bit.com](http://www.Bridle-Bit.com)

**Hoof Trimming** Experienced & Certified Natural Hoof Care Practitioner. I will pull shoes and trim your horse for barefoot comfort. I carry a good inventory of hoof boots and I offer boots at the best prices around. Call Keith Jacobson, 970-391-1838 or visit my website [www.naturalhoofcareofcolorado.com](http://www.naturalhoofcareofcolorado.com) for more information.

**Horsemanship/Symmetry, Balance, Moving with your Horse.** Private lessons. Clinics on trail riding. Gaited horse. Cow working. Dressage. Ground work. Joe and Kim Andrews. 970-613-0121. [www.mountainmagicranch.com](http://www.mountainmagicranch.com)

**Leather Care Shop** Leather repair and restoration. Saddle, tack cleaning and conditioning. Leather Artist; crafts, pictorial, and custom horse commissions. Joe and Kim Andrews 970-613-0121

See "Classified Ads" on page 7

*Classified Ads*

**Natural Barefoot Trims for Your Horse!** Certified Natural Hoof Care Practitioner can trim your horse's hooves the way Nature intended! I can also offer you the latest in hoof boots available: EasyCare Gloves. Let's work together to make your equine's hooves as strong and healthy as they can be. Call or email Silja Knoll, (970) 402 5104 or [siljaknoll@yahoo.com](mailto:siljaknoll@yahoo.com)

**Problem-Solving For Your Horse** Customized training available at your home or barn to improve teamwork between you and your horse. Identify causes of unwanted behavior and work on solutions to keep you safe and enjoy your horse. Groundwork, English, and western disciplines. For more info, see [www.freelyequine.com](http://www.freelyequine.com).

**Professional Vacation Care** for your horses, dogs, cats and all other animals at your home. Quality, meticulous care is what CES provides so you will have peace of mind while you are away from home. Complete Equine Services also offers Lay-up care at your facility, Training Assistance, Riding/ Exercising horses, Beginning Riding Lessons, and Long/ Short-term feeding and cleaning contracts. Please visit CES at [www.CompleteEquineServices.com](http://www.CompleteEquineServices.com) for more detail on the services we provide or call Erin at 970-391-6457.

**Ride Indoors at the Esh Training Center!** Tired of the snow, wind and cold? Ride in our 100 x 200 indoor arena for a low haul-in fee of \$10. We also offer: colt starting, training, lessons and clinics. Visit our website at: [www.paulesh.com](http://www.paulesh.com) or give us a call at 970-567-7505.

**Riders Wanted.** We're fat but lovable Tennessee Walkers. Pat Parrelli approach required. No spurs, only good riding skills. We do rein. You have to convince our partner that you can stay out of our mouth, and have a good seat. He may even have a saddle for you to use. We've been on lots of trails, pack trips, and attended many equine classes. If you're horseflesh challenged, but want to get involved in LCHA or just ride the mountains of Wyoming, go on LCHA activities, and can at least help with transportation expenses, send email to Skip Eshelman at [hexsigns@gmail.com](mailto:hexsigns@gmail.com)

**Stallion at Service: Cuttin Colonel,** Sire: Colonel Freckles, Dam: Cutters Pretty. Foundation pedigree speaks for itself. Outstanding disposition and athletic ability. NCHA Certificate of Ability, 1984 GNMCHA Maturity finalist, NRHA and AQHA performance point earners and money earning producer. Contact Mike Disque, TD Quarter Horses 303-229-3516, 970-532-9907, [spirithorsemtn@msn.com](mailto:spirithorsemtn@msn.com)

**Trailer for Sale** 3H GN Titan Horse/Stock combo Trailer for sale - \$5900. Trailer built in 2000. 3 Horses. 16 ft long (from wall to back). 7 ft tall, 2 ft short wall in dressing room. Sliding windows with screens in dressing room. Almost new tires (less than 1000 miles, 1 yr. old). 2 Jail bar dividers. Tie Rings inside and out. Saddle rack holds 3 saddles. Bridle hooks. Plexiglass for side slots available. Rubber floor mats. Spray-in bedliner in lower part of interior walls. 35 gallon water tank. Door organizer. One small fender ding. One owner....Clean...Clean....Clean! 12/2011

*Editor's Note:*

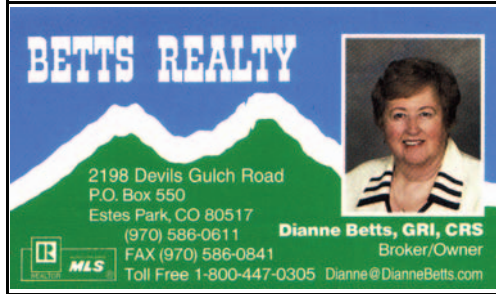
In the past, we have sometimes continued to publish classified information after an item is no longer useful; for example, an item for a trailer for sale ran two months after the trailer sold.

*Policy: LCHA Roundup* (this newsletter) will run "for sale" classified items for two months. If the owner of the item for sale wishes to extend the classified item, she/he must contact the editor and request an extension. Without an extension, *LCHA Roundup* will remove the item from the Classified section. This policy does not affect classified information for services offered.

# The Card Shop

If your card no longer appears in the Card Shop, It is probably because you have not yet renewed your business membership in LCHA.

Contact Toni McConnell (970-217-0287) to renew your membership and to have your card displayed here once again.



**BETTS REALTY**  
 2198 Devils Gulch Road  
 P.O. Box 550  
 Estes Park, CO 80517  
 (970) 586-0611  
 FAX (970) 586-0841  
 Toll Free 1-800-447-0305  
**Dianne Betts, GRI, CRS**  
 Broker/Owner  
 MLS



**EQUINE MEDICAL SERVICES**  
 3021 West County Road 64 · Fort Collins, CO 80524  
 Excellence in Performance Horse Care  
 Including field & in-clinic reproductive services & surgery  
 For Appointments and Information  
**(970) 568-9445**  
**Fax (970) 568-0705**  
**www.emsvet.com**  
**Dr. Allen Landes**

**Freely Equine, LLC**  
  
**Kristin Schuett**  
 Riding Lessons (Western, English)  
 Horse Training  
 Saddle Fitting  
  
*Improving teamwork between you and your horse.*  
 970-443-2758 E-mail: [kristin@freelyequine.com](mailto:kristin@freelyequine.com)  
 Serving Northern CO Web: [www.freelyequine.com](http://www.freelyequine.com)



**High Plains Natural Hoof Care, LLC**  
**Silja Knoll**  
 Certified Natural Hoof Care Practitioner  
**970.402.5104**  
[siljaknoll@yahoo.com](mailto:siljaknoll@yahoo.com)  
[www.highplainsnaturalhoofcare.com](http://www.highplainsnaturalhoofcare.com)



**MOUNTAIN VET SUPPLY**  
**Bill DeMoss**  
 Toll Free 1-800-331-5544 149 John Deere Dr.  
 Home 970-206-9125 Ft. Collins, CO 80524  
 Cell 970-988-8449 970-484-2200



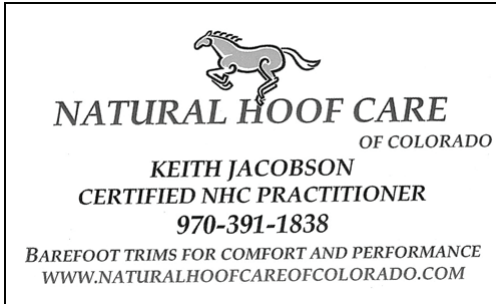
**Mill Creek Veterinary Service**  
 Equine Dentistry  
 Mobile Practice Only  
 Dr. Jim Latham  
 Dr. Patty Latham  
 4220 Cobb Lake Drive  
 Fort Collins, CO 80524  
 970-946-4791  
[jimlathamdvm@gmail.com](mailto:jimlathamdvm@gmail.com)  
[www.lathamdvm.com](http://www.lathamdvm.com)



**Mountain Magic Ranch**  
 Horse Training Joe and Kim Andrews  
 Riding Lessons  
 101 So. C.R. 29 Loveland, CO 80537 (970) 613-0121  
[mountainmagicranch.com](http://mountainmagicranch.com)

**For All Your Trailer Needs SALES**  
  
 • Large & Small • Equipments  
 • Dumps • Car Haulers  
 • Utilities • Enclosed Cargos  
 • Horse Trailers  
**(970) 532-5113**  
 2421 N. 1st St. Berthoud, CO 80513  
 Trades & Consignments Welcome  
  
**\$0 Down**  
 6 Months  
 Same as Cash

**EQUINE VETERINARY SERVICES OF NORTHERN COLORADO, PC**  
 Stephanie A. Brault, DVM, PhD, Dipl. ACVIM  
 Shawn N. Dixon, DVM, CVA  
 (970) 472-6363  
 P.O. Box 1026 LaPorte, CO 80535  
[www.evsnortherncolorado.com](http://www.evsnortherncolorado.com)  
*Personalized Care for Your Horse*



**NATURAL HOOF CARE OF COLORADO**  
**KEITH JACOBSON**  
 CERTIFIED NHC PRACTITIONER  
**970-391-1838**  
 BAREFOOT TRIMS FOR COMFORT AND PERFORMANCE  
[WWW.NATURALHOOF CARE OF COLORADO.COM](http://WWW.NATURALHOOF CARE OF COLORADO.COM)



**Precious Memories**  
 Pet Cemetery and Crematory  
 5815 E. Hwy 14  
 Fort Collins, CO 80524  
**(970) 482-7557**



# The Card Shop

Larimer County Horseman's Association



Horse Feed **10% Discount Card**


**TRIPLE CROWN**  
NUTRITION, INC.

Redeemable at:  
Ranch-Way Feeds Retail Store  
546 Willow, Fort Collins, CO  
970-482-1662  
www.Ranch-Way.com




Please present your current LCHA membership card at time of purchase

*Love the horse Learn the language*



**Cindy Loader**  
970-481-9150

clspiritdancer@aol.com  
6347 Savvy Place, Fort Collins, CO 80524



**Andrew C. Dean, DVM**  
Equine Veterinarian, Farrier and Dentist

**A balanced, rational approach to horse care and soundness**

P.O. Box 527 LaPorte CO 80535  
Haul in available  
970-490-1999  
laporteanimalclinic.com

*On The Wings Of A Horse*



**Annette Price, ECG**  
Dragonfly Farm  
Platteville, CO 80651  
970-788-9090  
annette@what-wire.com  
www.onthewingsofahorse.com

**My Source, LLC**  
First Class RV, Trailer Renovation

**Paul Thomson**  
Master Carpenter  
Master Cabinet Maker  
Over 30 years experience  
2563 CR 42  
Berthoud, Colorado  
970-581-8977  
Floors, walls, cabinets, custom built-ins... I do it right!  
Call now for an estimate.



**Sundance Trail Guest Ranch**

Fall, Winter and Spring - Country Inn with Meals and Horse-Back Riding  
- Family Get-Aways and Small Business Retreats  
- Ride Our Horses or Bring Your Own!

Summer - Family Dude Ranch Vacations (Six Night Minimum)

Ellen & Dan Morin  
17931 Red Feather Lakes Rd.  
Red Feather Lakes, CO 80545  
(970) 224-1222 or (800) 357-4930  
www.SundanceTrail.com  
Horses@SundanceTrail.com




Ride the Western Trails Publications presents

*Horse Trails of "Colorful" Colorado*

—Introducing—  
BOOK 1 - Larimer, Weld, Yuma Counties (B&W)  
BOOK 2 - Adams, Boulder, Douglas, Jefferson Counties  
BOOK 3 - Larimer, Boulder Counties

• Mountain & Flatland Trails  
• Full COLOR Pictures  
• Trail Descriptions, Length and Usage, Directions, Elevations, Maps, Difficulty Rating... and much, much more!

HAVE A HORSE??  
WANT TO RIDE??



Visit us at [www.horsebacktrails.com](http://www.horsebacktrails.com) or Call (970) 222-4943



**LOVELAND VET SUPPLY**

**Pam Remmo**

3611 S. Lincoln Ave.  
Loveland, CO 80537

970-461-1234  
Fax: 970-613-4366

**Saddle Up wants to thank you™**

**Larimer County Horse Associll**

Bring in this ad & save  
**10% off all New & Used Items**  
\*\*\*[excludes some items]\*\*\*

We Buy, Sell, Trade & Consign  
Personalized Saddle Fitting Service  
at the shop or your location  
Low Overhead equals Low Prices  
Mon-Sat 10-6 Closed Tues  
Sun 12-5, Evenings by Appt

**Saddle Up**  
New & Used Saddles & Tack  
12440 County Rd 1  
Longmont, CO  
303-772-7821  
info@saddleupcolorado.net  
Saddleupcolorado.net





### Larimer County Horseman's Association

Joining helps secure our equine presence in the county.

If you'd like,  let us know your areas of interest. We currently offer:  rides, trail & parades  clinics

- educational programs
- monthly newsletters
- advocacy
- store discounts
- trail maintenance, and
- disaster response resources

You will also meet the nicest horse folks around -- people just like you!

### Application for LCHA Membership

Name(s): \_\_\_\_\_

Email address: \_\_\_\_\_

Address: \_\_\_\_\_

City: \_\_\_\_\_ State: \_\_\_\_\_ Zip: \_\_\_\_\_

Phone: \_\_\_\_\_ Work Phone: \_\_\_\_\_

**How would you like to receive your Newsletter?:** ( Check one)

- Paper, via US mail
- Electronic (this option saves labor & financial resources)

**Membership type:** ( Check one)

- Individual \$24
  - Family \$36
  - Club \$36
  - Business \$40.00
- (includes a business listing in newsletters and a link to your website from ours)

Please **note:** The club membership year is June 1 to May 31. **Prorate** from June to the current month, **by subtracting \$2 per month for Individual & Family, or by subtracting \$3 per month for Business or Club** memberships when joining initially.

**Paid by:** ( Check one)  Cash [do not mail cash]  Check # \_\_\_\_\_

Make check payable to: Larimer County Horseman's Association, or **LCHA**

**Mail to:**

Larimer County Horseman's Association  
P.O. Box 270375  
Fort Collins, CO 80527-0375

Need more information? Go to [www.larimerhorseman.org](http://www.larimerhorseman.org) or call 970-217-0287



*40 Years of Service*

*LCHA Roundup*



*Larimer County Horseman's Association  
P.O. Box 270375  
Fort Collins, Colorado 80527-0375*