



LCHA Roundup

www.larimerhorseman.org

LARIMER COUNTY HORSEMAN'S ASSOCIATION

June, 2011

LCHA Annual Training Activity and Picnic

On June 25, 2011 LCHA will hold its annual training activity, picnic, and election of next year's board members.

Training Activity

We will be freshening up our skills with trail obstacles in the arena at Paul and Kay Thomson's ranch.



Plus a friendly trail class competition will end the days activity. You will be taught and judged upon your horsemanship skills, quality of communication, abilities to negotiate the obstacle, and rider balance/equitation.

- Training: Arrive at 9:00
- Training: Prompt start at 9:30
- Training: Ends at 12:00

Picnic

The picnic is just that – a picnic. LCHA provides hamburgers cooked on the grill, beverages, and condiments. Note: Paul Thomson cooks the hamburgers to perfection. Yum! You bring a dish to share.

Please RSVP for both events to Kay Thomson at 970-443-7111 (cell) or 970-532-2443 (home), e-mail kay@lpbroadband.net

- Picnic: arrive at 12:00
- Picnic: eat at 1:00

Directions to the Training Event and Picnic/Annual Meeting

From north, south, or east

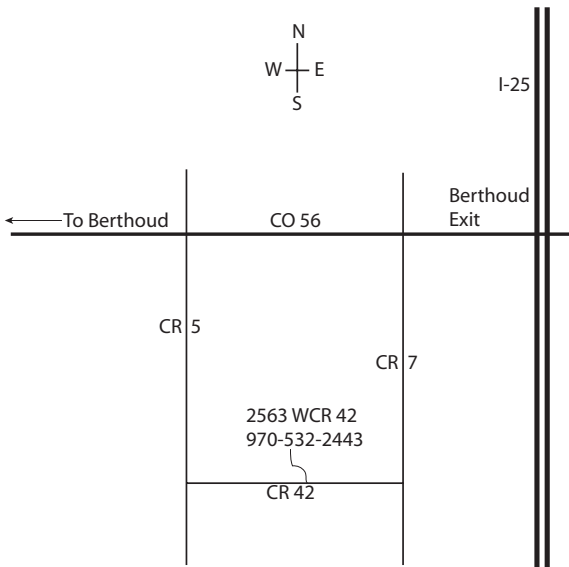
- Take the Berthoud exit from I-25.
- Turn west on CO 56.
- Go about 1 mile on CO 56 to CR 7.
- Turn Left on CR 7.
- Go about 1 mile on CR 7 to CR 42.
- Turn right on CR 42.
- Go about one-half mile on CR 42, and then turn right into the driveway for 2563 WCR 42.

In this month's issue . . .

LCHA Annual Training Activity and Picnic	page 1
Directions to the Training Event and Picnic/Annual Meeting	page 1
Prez Says	page 3
Legal Notice: LCHA Annual Meeting of Members	page 3
Special Notice Regarding Your LCHA Membership.....	page 4
"Take Me Out To the Ball Game, ... "	page 4
FYI: Tick Paralysis	page 4
Hi Everyone:	page 5
Trail Leader Training 2011.....	page 5
Trail Minders Travel the Nomad.....	page 6
Calendar of Events	page 8
Trail Rides in 2011	page 8
CLASSIFIED ADS	page 10
More Pictures of the Trail Ride Leader Training	page 14

Your Advertising can be here.
Rates: \$20 for full page per issue; \$10 for half page per issue.
Contact Hugh Templeton, editor of LCHA Roundup, for more information.

Paid Advertising



From west

- Take CO 56 east from Berthoud.
- Follow CO 56 to CR 5 (about 2 miles from the east edge of Berthoud at County Line Road).
- Turn right onto CR 5.
- Go about 1 mile on CR 5 to CR 42.
- Turn left on CR 42.
- Go about one-half mile on CR 42, and then turn left into the driveway for 2563 WCR 42.

Prez Says

Annual Picnic

Open To All Who Like To Eat And Get To Know More Horse Friends!

Come to the training activity in the morning. But really come to the picnic in the afternoon! Enjoy Paul's great cooking at 1:00, and time to visit with one another. There will be a short business meeting to elect the new officers and board members for the new year. We need you and your knowledge to help your club to be a positive influence for all horse owners and riders in Larimer County. Please come forward, tell us you would like to be a part of this growing organization. Board meetings are held the Third Thursday of each month at

7:00 PM to 9:00 PM, usually at the Ranch in the 4-H building.

The LCHA board upholds the mission statement, Education, Community, and Advocacy established by our members in 1972. In 2012 Larimer County Horseman's Association will be 40 years old!!!!

In 39 years LCHA members have many accomplishments:

- Respect in the county with positive influence.
- Helping hands for trail repairs.
- Grant support for new multi use trails.
- Liaison to the County organizations.
- Influence in regulations for horse businesses.
- Educational programs open to all.
- Training clinics, tack sales.
- Trailer skills.
- Emergency evacuation group.
- Temporary shelter for members in case of emergencies.
- Informative newsletter and web site.
- Fund raiser and supportive charity events.
- Advertising avenue for growing equine professionals.
- E-list for up to date communication between members.

WOW!! What a great opportunity for you to be a part of this organization! Join the LCHA board, come make the 40th year even more special for the horse community. Contact me, Kim Andrews 970-613-0121, e-mail horsemumbler@lpbroadband.net or any board member today to get your name on the election ballot!

*Kim Andrews,
President*

Legal Notice: LCHA Annual Meeting of Members

All members are hereby invited to LCHA's "Annual Meeting of the Members." This meeting will take place on Saturday, June 13th at 1:00PM. The meeting will be held at 2563 Weld County Road 42 in Berthoud, Colorado (Kay Thomson's house). Please check this Newsletter for additional information.

Kim Andrews

Worth Repeating

Special Notice Regarding Your LCHA Membership

The LCHA membership year runs from June 1 through May 31. Now is the time to renew your membership for the 2011/2012 LCHA year.

You should receive a post card soon reminding you to renew your membership, and you will see another reminder in the next two or three newsletters. We don't want you to miss all the great activities planned for the year just because you forgot to renew.

So stick around. Take a moment now to send your renewal check to

Larimer County Horseman's Association
P.O. Box 270375
Fort Collins, Colorado 80527-0375

Thanks, and see you around.

"Take Me Out To the Ball Game, ..."

As some of you are aware, the Rockies work with nonprofit groups to help with their gate "promotions." What this means is that you get to play "Santa Claus" at the gate, hand out whatever free item is being given away that day, and also get a free ticket to that day's game! Larimer County Horseman's Association is looking for the first 25 volunteers to work the June 29th game!

It is a Wednesday. The game begins at 6:10, and we are to arrive at 3:45. I have done this several times, and have nearly always been in my seat by opening pitch. The club, LCHA receives \$500, and it is one of our major fund-raisers each year. I have 1 additional free parking pass to give away. I will give it to the first person

that asks me for it, and can take some extra riders, and will commit to being there.)

Please call or e-mail me to reserve your spot! You do NOT have to be a member of LCHA to volunteer for the Rockies game fund-raiser for the club. Kids can work if they are 16 or older, and if you have one younger, I may still be able to get a ticket for them too, even though they are too young to work.

I have 2 spots to ride in my car, so I can take the first 2 people who would like to carpool down with me. I also have a parking pass.

Kay Thomson
970-443-7111

"If you can read this, thank a teacher, and if you think education is expensive, try ignorance!"

FYI: Tick Paralysis

This is an FYI for all of you who have dogs that are outside a lot and/or go hiking with you.

When I woke up yesterday morning, my dog, Brandi, was paralyzed in the hind end. Fearing the worst, I took her to the vet. By the time I got there her front end was paralyzed too. While the vet was examining her, I happened to mention seeing a tick on my foster dog a couple of days earlier. We checked Brandi over thoroughly and found 2 ticks on her.

Female ticks of the species we have here produce a toxin that causes paralysis in dogs and people...and probably horses too if they have a lot on them. Respiratory failure can occur if the process progresses far enough.

Once the tick is removed, the animal begins to recover. My dog was better in 7 hours and is fine today. Keep an eye out for ticks on all of your animals.

This is the first time in 17 yrs. where I live (in the mountains) that I've seen a tick on my dogs. Maybe this will be a heavy tick year.

Pat Carey

Editor's Note:

Larimer County has recently eased regulations regarding equestrian businesses. For more information on the regulations, go to the <http://www.larimer.org/horses/> web site.

For a limited time, the county offers registration for your business at a very reduced rate so that many of the small equestrian businesses in the area can register and receive the protections offered by the regulations. Susan (see "Hi Everyone") has gone through the process, and has reported her experience, below.

Hi Everyone:

I just wanted to let you know how easy and fast the process is, to get signed up as a horse business in Larimer County.

As most of you know, the rules changed this year, making it easier and less expensive to register as a horse business. From now till September, there is a 50% discount to register. I went to the Workshop in Berthoud and it only took about 10 minutes. If you are a horse business in Larimer County, go in and register before September, get legal, get protection from the County, and save yourself some money.

If you have a question, call Karin Madson, Larimer County planner 498-7692 or go to <http://www.larimer.org/horses/>.

Susan Kurzweil

*IMPS Co-Regional Coordinator for CO, UT and WY
minpinrescue.org*

LCHA Roundup is a newsletter of the Larimer County Horseman's Association (LCHA), P.O. Box 270375, Fort Collins, CO 80527-0375.

*Editor: Hugh Templeton, 970-622-0982
hught@lpbroadband.net*

The LCHA Board of Directors:

- President, Kim Andrews 970-613-0121*
- Vice President, Ted Newport 970-397-9591*
- Secretary, Susan Kurzweil, 970-663-6738*
- Treasurer Gary York.....'970-203-0144*
- Immed Past Pres, Jillian L'Ecuyer..... 970-568-9526*

Committee Managers and Members at Large:

- TJ Newport, Web Master..... 970-397-6986*
- Hugh Templeton, Emergency Evacuation 970-622-0982*
- Racheal Cohen, Membership 720-273-4798*
- Toni McConnell, Membership 970-217-0287*
- Bonnie Robinson, Program 970-217-1113*
- Bonnie Templeton, At Large..... 970-622-0982*

LCHA Roundup thanks the following persons for their contributions:

Racheal Cohen— preparing the newsletter for mailing.

If you have ideas, comments, or questions about LCHA, horses, the horse industry in Larimer County, or this newsletter, send them to the editor.

Trail Leader Training 2011

LCHA is proud of our Trail Leaders! This year's training had one new apprentice leader, Stacey Geer. You will be seeing Stacey mentored on trail rides this summer with her horse Lucy. This year's Trail Leader Training was also for existing leaders to get updated and refreshed on handling different situation, whether for the horses' needs or person's needs, and was open to other LCHA members.

In the morning we had a group discussion of Trail Leader expectations, the program requirements, and experiences. The over-riding thought was one of respect for the land owners, equines, and people.

Our well broke, experienced trail horses this year must have decided to see what we are made of as trail ride leaders. The horses supplied us with a variety of very good challenges during the training ride:



Gary York, Susan Kurzweil, and Ed Stetson try out the zigzag obstacle

- Herd placement problems
- The grumpy horse
- The "I want to be in front" horse
- I can't do the trail pace
- Spook at the golf cart
- Not sure about this bridge



Out on the Trail

It was a great training and great discussion, and sharing from all. I look for to this year's LCHA trail rides, I hope you do too.

*Kim and Joe Andrews
Trail Ride Leader Trainers*



It's a bridge, and it makes noise, too.

- Never felt Mountain Mahogany bushes touching my sides
- No trail: what do I do – what do I follow?
- Slow group and fast group
- Change of designated trail ride pace.

Trail Minders Travel the Nomad

Nomad Trail in Horsetooth Mountain Park

Yep. By 9:00 AM on Saturday, April 16, 10 Trail Minders had assembled at the Soderburg trail head: Joe Andrews, Susan Kurzweil, Jan Larson, Marianne Mitchell, Ted and TJ Newport, Mark Reinke, Suzy Riding, Gary York, and Hugh Templeton to meet 2 of the Larimer County trail crew, Kim Wolfe and John Bender for a day of trail maintenance. Kim gave the safety information for all the tools we would use, and then we hiked the short distance to the upper loop of the Nomad trail. From there we split into two groups, one group starting where the trail meets the service road, the other group starting further down the trail.

Amid stories about our horses, jokes, and getting to know one another, we also did some trail maintenance:

- Rebuilt some water bars

- Cleaned out some grade dips where water was pooling on the trail
- Removed berm that was preventing water from crossing the trail
- Built a new water bar or two or three.

At 11:00 we took a break a for lunch and enjoyed our 6-inch sub sandwiches. **Subway** on Eagle Drive in Loveland donated one sandwich per volunteer, and they tasted great after a morning of working on the trail. We continued to talk, joke, and laugh through our lunch break.

After lunch, we continued to move down the trail, working and having a good time as we went. IN the afternoon, two pairs of horses went by, and we chatted with them as they passed. When 1:00 PM came near, we started to slow down and look at what we had accomplished. The trail was in much better shape than it was when we arrived -- a gratifying sight.

We started back to the trail head by about 1:15, and were leaving for home soon afterward, tired but happy.

Next Trail Maintenance Day

Our next trail maintenance day is on Saturday, June 4. We have been choosing the first Saturday in June for several years now because it gives us a chance to participate in National Trails Day (NTD). Why should we participate in NTD?

“America's 200,000 miles of trails allow us access to the natural world for recreation, education, exploration, solitude, inspiration, and much more. Trails

take us to good physical and mental health by providing us with a chance to breathe fresh air, get our hearts pumping, and escape from our stresses.” (for more information on NTD, go to the website <http://www.americanhiking.org/national-trails-day/>).

Besides that, maintaining trails in our county builds an excellent relationship with the land managers who actually own the lands the trails are on, and they, in turn, keep the trails in our area open to horses.

The trail we are maintaining on June 4 this year is Lion Gulch. LCHA adopted Lion Gulch trail many years ago, and we have maintained, repaired, rebuilt sections, and re-routed parts of the trail since then. It is a beautiful trail from US 36 to the Homestead Meadows, which still has cabins and other buildings constructed in the late eighteen hundreds.

We meet at 8:30 AM at the Lion Gulch trail head and we usually leave for home by 2:00 PM. Subway of Berthoud donates one 6-inch sandwich for each volunteer for the day.

Join us on Lion Gulch on June 4. You'll be glad you did.

Let's be proud to be LCHA Trail Minders. See you on the trail.

Hugh Templeton

Trail Maintenance Schedule for 2011

Day/Date	Trail	Arrive
Sat/ June 4	Lion Gulch Hugh Templeton, 970-622-0982	8:30 AM
Sat/ July 16	Nomad Trail, Horsetooth Mountain Park Hugh Templeton, 970-622-0982	9:00 AM
Sat/ Aug 13	Lion Gulch Hugh Templeton, 970-622-0982	8:30 AM
Sat/ Sept 17	Lion Gulch Hugh Templeton, 970-622-0982	8:30 AM

If you have questions regarding LCHA Trail Minders, or if you want to sign up for a specific trail maintenance trip, call or email Hugh Templeton at 970-622-0982 or hught@lpbroadband.net.

Calendar of Events

Events in 2011

Date	Day	Event	Location	Contact	Time
June 25	Sat	LCHA Training Event, Trail obstacles/balance equitation and a friendly competition at the end with Polo shirts for prizes	Kay Thomson's Arena	Kay Thomson, 970-532-2443, or 970-443-7111	Arrive at 9:00 AM, Ready to ride at 9:30 AM
June 25	Sat	LCHA Annual Picnic and Meeting	Kay Thomson's	Kay Thomson, 970-532-2443, or 970-443-7111	Arrive at Noon, Eat at 1:00 PM
July 23	Sat	LCHA Fun Ride – Polo Cross – and Fundraiser	TBA	Susan Kurzweil, 970-663-6738	TBA
Sept 24	Sat	Poker Ride	Lory State Park	Kim Andrews 970-613-0121	Arrive at 10:00, Ride at 10:30
Dec 3	Sat	Christmas Caroling on Horseback	Berthoud (details to be announced)	TBA	Meet at Noon, ride at 12:30

Trail Rides in 2011

The Trail Ride Coordinator is TJ Newport (970-397-6986). If you would like to suggest a trail ride location, or if you would like to lead a trail ride, call TJ.

Sign In

If you intend to participate in a trail ride, please notify the ride leader(s) at least two days in advance:

For A Trail Ride On ...	Notify the Ride Leader(s) by ...
Saturday	Wednesday evening
Sunday	Thursday evening

For any trail ride, be ready to ride at the time shown on this schedule, unless otherwise noted.

Trail Rides for 2011

Date	Day	Location	Leader	Pace	Limit	Arr	Ride
June							
June 18	Sat	Crozier Mtn LCHA members only	Susan Kurzweil, 663-6738 Bring a lunch	W, T	3 trailers	9:30	10:00

Trail Rides for 2011

Date	Day	Location	Leader	Pace	Limit	Arr	Ride
July							
July 16	Sun	Lady Moon LCHA members only	Pat Carey 970-224-4532 Bring a lunch	W, T	8	9:00	9:30
July 17	Sun	Mt Margaret LCHA members only	Susan Kurzweil (663-6738) and Kim Andrews (613-0121) Bring a lunch	W, T, C	None	9:30	10:00
July 29	Fri	Lion Gulch LCHA members only	Kay Thomson 970-532-2443, or 970-443-7111 Bring a lunch	W, T	None	8:30	9:00
July 30	Sat	Bobcat Ridge LCHA members only	Stacey Geer 970-635-2695 or 970-988-7996 Bring a lunch	W, T, C	6	10:00	10:30
August							
Aug 14	Sun	Beaver Meadows LCHA members only	Pat Carey 970-224-4532 Bring a lunch	W, T	8	9:00	9:30
Aug 21	Sun	Lory State Park LCHA members only	Stacey Geer 970-635-2695 or 970-988-7996 Bring a lunch	W, T, C	None	10:00	10:30
Aug 27	Sat	Hermit Park LCHA members only	Kim Andrews 970-613-0121 Bring a lunch	W, T, C	None	9:30	10:00
September							
Sept 18	Sun	Crozier Mountain LCHA members only	Susan Kurzweil 663-6738 Bring a lunch	W, T	3 trailers	9:30	10:00
Sept 24	Sat	Poker Ride	Kim Andrews 970-613-0121	W, T, C	No limit - come one, come all	10:00	10:30
Sept 25	Sun	Red Mountain LCHA members only	Pat Carey 970-224-4532 Bring a lunch	W, T	6	9:00	9:30
October							
Oct 15	Sat	Pawnee Grasslands Open to LCHA members and their guests Bring a lunch	Kay Thomson 970-532-2443 or 970-443-7111	W, T, C	No limit - come one, come all	9:30	10:00
Oct 22	Sat	Hall Ranch LCHA members only Bring a lunch	Stacey Geer 970-635-2695 or 970-988-7996 Bring a lunch	W, T	8	10:00	10:30

Trail Rides for 2011

Date	Day	Location	Leader	Pace	Limit	Arr	Ride
Oct 23	Sun	Eagles Nest LCHA members only Bring a lunch	Pat Carey 970-224-4532 Bring a lunch	W, T	None	9:00	9:30
December							
Dec 3	Sat	Christmas Caroling on Horseback, Berthoud This event is open to the public.	Kay Thomson 970-532-2443	W	No limit - come one, come all	noon	12:45

W = Walk; T = Trot; C = Canter

**** Reminder:** You must have a Colorado Department of Wildlife Habitat Stamp to participate in any ride on Department of Wildlife trails.

CLASSIFIED ADS

Better yourself, better your horse! Not enjoying the joyful and abundant partnership you always dreamed of? Get the support you need to thrive with your horse at Mountain Rose Horsemanship Training. Teaching people to teach horses in the pursuit of partnership! Visit www.mountainrosetraining.com for more information.

For Sale Hand tied rope halters with lead rope. All sizes – from pony to draft. I can do halters for llamas also. Choose the color you want. A single halter and lead costs \$20. For multiple halters, call for pricing. Call Ted Newport Jr. (T.J.) 970-397-6986

For Sale Nice group of kind, gentle, and nice looking horses for sale, professional training, age 2 and up. See them on our web site @ www.Bridle-Bit.com
Also – Individual lessons, clinics, training from start to finish. Call 970-454-3061 or visit our web site at www.Bridle-Bit.com

Hoof Trimming Experienced & Certified Natural Hoof Care Practitioner. I will pull shoes and trim your horse for barefoot comfort. I carry a good inventory of hoof boots and I offer boots at the best prices around. Call Keith Jacobson, 970-391-1838 or visit my website www.naturalhoofcareofcolorado.com for more information.

Horsemanship/Symmetry, Balance, Moving with your Horse. Private lessons. Clinics on trail riding. Gaited horse. Cow working. Dressage. Ground work. Joe and Kim Andrews. 970-613-0121. www.mountainmagicranch.com

Leather Care Shop Leather repair and restoration. Saddle, tack cleaning and conditioning. Leather Artist; crafts, pictorial, and custom horse commissions. Joe and Kim Andrews 970-613-0121

Natural Barefoot Trims for Your Horse! Certified Natural Hoof Care Practitioner can trim your horse's hooves the way Nature intended! I can also offer you the latest in hoof boots available: EasyCare Gloves. Let's work together to make your equine's hooves as strong and healthy as they can be. Call or email Silja Knoll, (970) 402 5104 or siljaknoll@yahoo.com

Problem-Solving For Your Horse Customized training available at your home or barn to improve teamwork between you and your horse. Identify causes of unwanted behavior and work on solutions to keep you safe and enjoy your horse. Groundwork, English, and western disciplines. For more info, see www.freelyequine.com.

Professional Vacation Care for your horses, dogs, cats and all other animals at your home. Quality, meticulous care is what CES provides so you will have peace of mind while you are away from home. Complete Equine Services also offers Lay-up care at your facility, Training Assistance, Riding/ Exercising horses, Beginning Riding Lessons, and Long/ Short-term feeding and cleaning contracts. Please visit CES at www.CompleteEquineServices.com for more detail on the services we provide or call Erin at 970-391-6457.

Ride Indoors at the Esh Training Center! Tired of the snow, wind and cold? Ride in our 100 x 200 indoor arena for a low haul-in fee of \$10. We also offer: colt starting, training, lessons and clinics. Visit our website at: www.paulesh.com or give us a call at 970-567-7505.

Riders Wanted. We're fat but lovable Tennessee Walkers. Pat Parrelli approach required. No spurs, only good riding skills. We do rein. You have to convince our partner that you can stay out of our mouth, and have a good seat. He may even have a saddle for you to use. We've been on lots of trails, pack trips, and attended many equine classes. If you're horseflesh challenged, but want to get involved in LCHA or just ride the mountains of Wyoming, go on LCHA activities, and can at least help with transportation expenses, send email to Skip Eshelman at hexsigns@gmail.com

Stallion at Service: Cuttin Colonel, Sire: Colonel Freckles, Dam: Cutters Pretty. Foundation pedigree speaks for itself. Outstanding disposition and athletic ability. NCHA Certificate of Ability, 1984 GNMCHA Maturity finalist, NRHA and AQHA performance point earners and money earning producer. Contact Mike Disque, TD Quarter Horses 303-229-3516, 970-532-9907, spirithorsemtn@msn.com

Editor's Note:


In the past, we have sometimes continued to publish classified information after an item is no longer useful; for example, an item for a trailer for sale ran two months after the trailer sold.

Policy: LCHA Roundup (this newsletter) will run "for sale" classified items for two months. If the owner of the item for sale wishes to extend the classified item, she/he must contact the editor and request an extension. Without an extension, *LCHA Roundup* will remove the item from the Classified section. This policy does not affect classified information for services offered.




The Card Shop

BETTS REALTY



2198 Devils Gulch Road
P.O. Box 550
Estes Park, CO 80517
(970) 586-0611
FAX (970) 586-0841
Toll Free 1-800-447-0305

Dianne Betts, GRI, CRS
Broker/Owner
Dianne@DianneBetts.com



Complete Equine Services
Peace of Mind for You AND Your Horses!



970-391-6457

Erin Wilson-Kaufman, Owner
1931 ECR 58
Fort Collins, CO 80524
www.CompleteEquineServices.com
erin@completeequineservices.com

EQUINE MEDICAL SERVICES
3021 West County Road 64 - Fort Collins, CO 80524



Excellence in Performance Horse Care
Including field & in-clinic reproductive services & surgery

For Appointments and Information
(970) 568-9445
Fax **(970) 568-0705**
www.emsvet.com

Dr. Allen Landes

Freely Equine, LLC



Kristin Schuett
Western & Hunt Seat Instruction
Horse Training
Trail Lessons



Improving teamwork between you and your horse.
970-443-2758 E-mail: kristin@freelyequine.com
Serving Northern CO Web: www.freelyequine.com

High Plains Natural Hoof Care, LLC




Silja Knoll
Certified Natural Hoof Care Practitioner

970.402.5104

siljaknoll@yahoo.com
www.highplainsnaturalhoofcare.com

LAPORTE ANIMAL CLINIC
MARTA DEAN, D.V.M. ANDREW DEAN, D.V.M.



SMALL ANIMALS
AVIAN
EXOTICS
HORSES (MOBILE AND HAUL-IN)

PH: 970-490-1999
FAX: 970-407-7977

CONVENIENTLY LOCATED IN THE OVERLAND TRAIL SHOPPES
3333 CTY RD. 54G, UNIT G, P.O. BOX 527, LAPORTE, CO 80535
ON THE CORNER OF OVERLAND TRAIL & OLD HWY 287 (54G)

MIKE BRASHEAR HORSE TRAINING



Mike & Laura Brashear
13540 WCR 10
Fort Lupton, CO 80621
(303) 857-6297
www.MikeBrashear.com

Specializing in
RANCH HORSE VERSATILITY
&
PERFORMANCE HORSES

Mountain Magic Ranch
Horse Training Riding Lessons
Joe and Kim Andrews



101 So. C.R. 29 Loveland, CO 80537 (970) 613-0121
mountainmagicranch.com

Emily Johnson
OWNER & INSTRUCTOR



MOUNTAIN ROSE horsemanship TRAINING


13770 DAVIS LANE
LONGMONT, CO 80504
PHONE: 303.877.5767
WWW.MOUNTAINROSETRAINING.COM
EMILY@MOUNTAINROSETRAINING.COM

My Source, LLC
First Class RV, Trailer Renovation



Paul Thomson
Master Carpenter
Master Cabinet Maker
Over 30 years experience
2563 CR 42
Berthoud, Colorado
970-581-8977
Floors, walls, cabinets, custom built-ins... I do it right!
Call now for an estimate.

NATURAL HOOF CARE
OF COLORADO



KEITH JACOBSON
CERTIFIED NHC PRACTITIONER
970-391-1838
BAREFOOT TRIMS FOR COMFORT AND PERFORMANCE
WWW.NATURALHOOF CAREOF COLORADO.COM

Precious Memories



Pet Cemetery and Crematory
5815 E. Hwy 14
Fort Collins, CO 80524
(970) 482-7557

The Card Shop



Rocky Mountain RIDER
Regional All-Breed Horse Magazine — Since 1993

Natalie Riehl
Publisher/Editor

PO Box 995 • Hamilton, MT 59840
406-363-4085 • 888-747-1000
Fax 406-363-1056
editor@rockymountainrider.com
www.rockymountainrider.com

SPOTTED FEVER RANCH

Rick & Pat Binger
9057 ECR 26
Loveland, CO 80538

Registered Paint Horses

www.spottedfeverranch.com
rick@spottedfeverranch.com
970-222-3656

The Tack Trunk
The Right Tack at the Right Price

Anne Cooney
Owner
970-227-6566
asha_cooney@yahoo.com



Resident Realty
Bonnie Robinson
Broker/Associate

8010 CR 5, Suite 102
Fort Collins, CO 80528



970-223-3361 Direct
970-377-4109 Fax
bonnie.robinson@msn.com
970-217-1113 Mobile

www.bonnie-robinsonhome.com

WADE TREE RANCH

Randall Davis



- * Working Cow Horse
- * Ranch Horse Versatility
- * Starting Colts and Wild Mustangs

Cell: 970-301-2995
www.wadetreeranch.com

Larimer County Horseman's Association




Horse Feed **10% Discount Card**

Redeemable at:
Ranch-Way Feeds Retail Store
546 Willow, Fort Collins, CO
970-482-1662
www.Ranch-Way.com



Please present your current LCHA membership card at time of purchase

For All Your Trailer Needs SALES



- Large & Small • Equipments
- Dumps • Car Haulers
- Utilities • Enclosed Cargos
- Horse Trailers

(970) 532-5113
2421 N. 1st St. Berthoud, CO 80513

Trades & Consignments Welcome



\$0 Down
6 Months
Same as Cash

EQUINE VETERINARY SERVICES
OF NORTHERN COLORADO, PC

Stephanie A. Brault, DVM, PhD, Dipl. ACVIM
Shawn N. Dixon, DVM, CVA

(970) 472-6363
P.O. Box 1026 LaPorte, CO 80535
www.evsnortherncolorado.com
Personalized Care for Your Horse

2010 Extreme Mustang Makeover Competitor

Colorado Reinsman

No Gimmicks, No Gadgets, just a solid foundation

www.coloradoreinsman.com

Sean Davies
seand62@hotmail.com (970) 980-6485

WALKING OUT WEST



Gaited Horse Training
Lessons
Clinics



Debbie Garfield, Trainer
(303) 725-3551 Cell
Email: walkingoutwest@yahoo.com

More Pictures of the Trail Ride Leader Training



Kim and her horse, Curl, show how to go through the zigzag obstacle



Trail leader adjustment



So which way ARE we going?

39 Years of Service

LCHA Roundup



*Larimer County Horseman's Association
P.O. Box 270375
Fort Collins, Colorado 80527-0375*