

*"Any hound a porcupine nudges, can't be blamed for harboring grudges. I know one hound that laughed all winter, at a porcupine that sat on a splinter." — Ogden Nash*

## CALENDAR

### GIBRALTAR BAY UNIT (GBU) DETROIT RIVER INT'L WILDLIFE REFUGE

28820 E. River Rd.  
Open to the Public  
Daily, Dawn to Dusk

### GINLC EVENTS

#### ISLAND WIDE CLEAN-UP

Sat, April 27 @ 9:00 am  
Meet at Centennial Farm

#### EARTH DAY CELEBRATION

Sun, Apr 28, 2:00 – 5:00 pm  
Centennial Farm

#### AIRPORT NATURE AREA

Open, hosted by GINLC  
Sundays, May 5 - Oct 27  
1:00 – 4:00 pm  
Enter through the GBU

#### TAKE IT OUTSIDE PHOTO CONTEST DEADLINE

Thurs, May 9 @ 11:59pm

#### FROG SURVEY

Fri, May 10 @ 8:30 pm, GBU

#### 1ST GLOBE EVENT

Sat, May 18 @ 1pm, GBU

#### MIGRANTS ON THE MOVE

Sun, May 19 @ 10am, GBU



LEFT: J. GLOVER, CC-BY-SA-2.5, RIGHT: BRIAN HARTWELL

## NATIVE SPECIES OF GROSSE ILE???

# North American Porcupine (*Erethizon dorsatum*)

BY JOHN LEON

One of our GINLC, Members, Dr. Brian Hartwell, contacted us to say, "I came across this tree (in the woods across from Meridian Elementary) completely missing its bark all around. It was about 12 - 15 feet off the ground. There were a few little chips of bark at the base of the tree. My guess would be a porcupine but never heard of them this far south."

After a little searching, yes, they can be this far south, and it looks like we could have a previously unknown resident on GI. How could it have gotten here? There are stories of porcupines inadvertently hitchhiking in a batch of Christmas trees. Or????

Board member and all-round nature-

knowledgeable guy Doug Thiel responded, "I am not aware of any porcupines in southeast Michigan. I can't tell for sure but it appears the tree is dead. My guess is that a woodpecker was working on the tree and the bark fell off. I have porcupines up at my property near Mt. Pleasant. They like to eat the bark on my Beech trees. As far as habitat goes they generally prefer larger tracts of mature forests. They usually feed at ground level or sitting on a branch in the upper levels of the trees."

Thank you, Doug. But in the interest (and hope) of having porcupines in our midst, go to page 11.



PRESIDENT'S  
NOTES

SPECIAL DONORS

IN MEMORY OF  
**RICHARD & LEWIS DAVIS**

*Eileen & Donald Davis*

IN MEMORY OF  
**MARGARETE HASSERODT**

*The Grosse Ile Garden Club*

IN MEMORY OF  
**BRUCE & JOAN JONES**

*Blair & Gordon Jones*

IN MEMORY OF  
**TED KARMAZIN**

*Nancy Karmazin  
Grosse Ile Bridge Co.*

IN MEMORY OF  
**ART PAYETTE**

*Peter Kantz  
Arlene H. Rebeschini  
Joan & Charles Strickler  
Barbara & Ralph Thayer  
Roberta Urbani & John Leon*

IN MEMORY OF  
**RICHARD G. RATEICK**

*Barbara Rateick*

**GROSSE ILE BRIDGE CO.**

**JOHN C. JACKSON**

**MEYER FAMILY FND.,**  
*Kimberley Meyer*

**MEYER FAMILY FND.,**  
*Susan Eldredge*

*Thank you*

# Reflections From the President

BY PETER KANTZ

During winter, GINLC's outdoor activities are somewhat limited. Our big project in December was construction of the retaining wall south of the stairway at Sunrise Park. Education Committee conducted several outdoor educational programs that explained how plants and animals handle the cold weather. When weather permitted,



we stewarded the Gibraltar Bay Unit of the Detroit River International Wildlife. This winter, GINLC started a program to monitor the remediation work being done at the former McLouth Steel site, helping ensure that the environment and residents are protected from any fallout or seepage from the site. Much of the winter, however, was spent planning for the coming months, developing budgets, inventorying land and material assets, planning projects, meeting with township and school officials, improving communications, etc.

Now that Spring is here, all our planning starts to pay off. In April we'll reconstruct the Sunrise Park kayak slide and landscape around the new retaining wall. Towards the end of April, we celebrate Earth Day, always a major event for us, and participate in Kiwanis' Island-wide Clean-up. In May we concentrate on improving our more visible properties such as Hennepin Marsh Gateway, located on Meridian a half mile north of Bridge, which contains a trail, boardwalk, observation deck and educational signage. May is also when we start hosting the Sunday 1 pm to 4 pm Open House at the GBU/Airport Wildlife Refuge. May 31 thru June 2nd is Islandfest where we participate in the parade, have a booth at the airport, handout information and goodies and display the winners of our high school photography contest. Throughout Spring, outdoor educational programs are conducted to help budding environmentalist learn about the importance of protecting our natural environment.

Spring is a great time to get outside and enjoy nature. Working outdoors is a great way to relieve stress and get some exercise. As always, GINLC is looking for volunteers to help with our many programs. Some of the work is physical and some is administrative in nature. All volunteers are welcome. None of the programs and projects we do would be possible without our volunteers and generous donors. If you would like to help, email us at [info@ginlc.org](mailto:info@ginlc.org), talk to one of our Board members, or visit our information booth at Islandfest.

GINLC EVENTS cont'd

**ISLANDFEST**

Parade: June 1 @ 9:00am  
GI High School parking lot  
Booth Support:  
May 31, June 1 & 2,  
Airport Hangar

**KIDS EXPLORATION  
WONDERFUL  
WETLANDS**

Sun, June 9 @ 1pm  
Gibraltar Bay Unit

**AMAZING  
AMERICAN LOTUS**

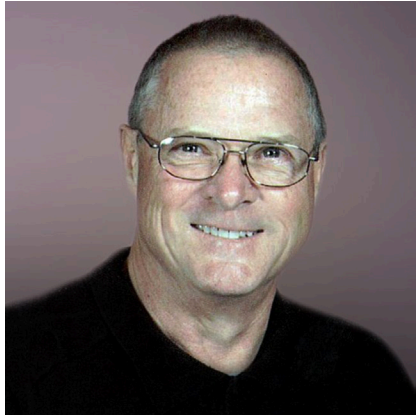
Sun, Aug 18 @ 1pm  
Gibraltar Bay Unit

## In Memory

*With heavy hearts we mourn the passing of two very dear individuals in the GINLC family:*

### Art Payette 1945 – 2019

Art was an active GINLC member for many years and a board member from 2013 until his death on Jan. 27. Although he battled multiple myeloma for 12 years, Art led the stewardship group at the Gibraltar Bay Unit of the Refuge for several years and co-chaired the GINLC High School Nature Photo Contest. He was awarded Conservationist of the Year in 2013 for his "leadership, dedication and outstanding contributions to the stewardship and public enjoyment of the Refuge and Airport Nature Area on Grosse Ile."



Art was known for his sunny disposition and warm, friendly personality. He and his wife Doreene were involved in many Grosse Ile organizations and greeted everyone with smiles on their strolls around Hickory Island. Art and Doreene met in first grade at St. Patrick's school in Wyandotte. Their

youthful friendship blossomed into a love that lasted 68 years.

In accordance with Doreene's wishes, GINLC members and friends are collecting funds to install a memorial bench for Art at the GBU where he spent many happy and productive hours.

---

### John D. Dingell, Jr. 1926 – 2019

John Dingell was a longtime friend and supporter of the GINLC. He and his wife, our Congresswoman Debbie Dingell, were our companions in many recent IslandFest parades.

It is well known that Mr. Dingell was the longest serving member of the U.S. House of Representatives in history. He was first elected in Dec. 1955, following his father's sudden death. He retired on Jan 3, 2015, having served 59 years in Congress, during 11 different presidencies.



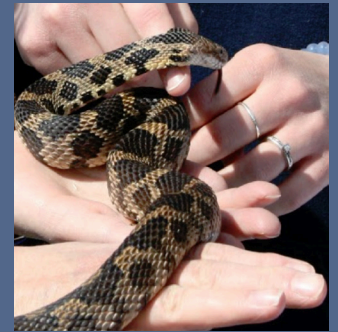
Mr. Dingell was Grosse Ile's congressman during most of his career, serving the Downriver area. While he was the Congress's most ardent defender of the auto industry, he also cared deeply about the environment. Among his many accomplishments are the passage of the Water Quality Act of 1965, Clean Water Act of 1972, the Endangered Species Act of 1973, and the Clean Air Act

Amendments of 1990. He and his father introduced universal health care legislation into every session of Congress. Mr. Dingell was proud of his work on the Medicare Act of 1965 and the Affordable Care Act of 2010, as well as the Civil Rights Act of 1964.

***We extend our deepest sympathy to Doreene and Debbie and their families.***

## EARTH DAY 2019: BE THERE!

The GINLC is celebrating the 49th official Earth Day on Sunday, April 28, from 2-5pm at Centennial Farm and we hope to see you there! This is a family-friendly event, featuring kids' crafts, tasty snacks, and fun activities and useful information for everyone.



### OUTSIDE:

*(weather permitting)*

- Crafts including planting a "Root Man" flower pot
- Live animals from Lake Erie Metropark
- Pond study
- Tree ID walk

### INSIDE PRESENTATIONS:

- McLouth Steel site demolition and cleanup
- Detroit River International Wildlife Refuge and the status of the Visitor Center
- Downriver Linked Greenways bike paths
- How to attract and raise Monarch butterflies
- Home Energy Conservation
- A plethora of informational displays

# ARE YOU PAYING ATTENTION TO THE MCLOUTH SITE CLEANUP AND REDEVELOPMENT?

Like all Downriver communities, Grosse Ile residents are concerned about the situation at the former McLouth Steel Company. Although the site is in Trenton, it is likely that Grosse Ile could bear the greatest impact of any activities that take place there in the coming years. Because of these concerns, the GINLC has been following recent developments and is continuing to stay involved. Board member Doug Thiel is a retired Environmental, Health, and Safety Manager from BASF Corporation with a Bachelor's degree in Biology and a Master's in Occupational and Environmental Health. He played a major role in the successful remediation and redevelopment of BASF's Southworks property on Biddle in Wyandotte. Doug has recently conducted asbestos air monitoring on W. River Rd. during some demolition activities at the site and to-date has not found any measurable concentrations of asbestos. Doug prepared the following GINLC statement (unanimously approved by all GINLC board members) and presented it in a discussion with the EPA and MDEQ on Monday, March 25. The GINLC urges all residents to pay attention to the activities at the site and let our elected officials (local, state, and federal) know if any questions or concerns arise.



## GINLC Position Paper on McLouth Steel Site

The Grosse Ile Nature and Land Conservancy (GINLC) would like to offer the following recommendations regarding the McLouth Steel Site remediation and redevelopment project undertaken by Crown Enterprises, Inc. and MSC Land Co., LLC. The GINLC is a non-profit, charitable organization dedicated to the preservation and protection of the natural resources of the Township of Grosse Ile and the surrounding area for the public benefit. Our overriding desires are that the site will become a positive asset to the area and that all of the historical contamination present at the site will be properly remediated to protect human health and the environment. The recommendations outlined in this letter were unanimously approved by the GINLC Board of Directors on March 13, 2019.

### ***Specific recommendations are as follows:***

1. The EPA should develop a list of key stakeholders who have an interest in the site demolition, remediation and redevelopment as soon as possible. A robust public outreach program needs to be developed and implemented to ensure full public participation during the various phases of the site redevelopment which involves all identified stakeholders. This should be accomplished, at a minimum, by timely updating of the website specific to this site as well as, at a minimum, quarterly public meetings. To maximize public participation, these meetings should be rotated through the various cities located in close proximity to the site. In addition, all key stakeholders should be notified promptly of any non-compliance issues involving contractors working at the site as well as any emergency situations arising from activities at the site.

2. All demolition and remediation activity at the site should be conducted with the goal of minimizing off-site migration of contaminants as much as is humanly possible. This would include airborne migration of contaminants, stormwater run-off, groundwater migration to the Detroit River and transportation-related movement of contaminants off the site. Given the recent non-compliance during building demolition when the EPA was not on-site, no demolition or clean-up

# Spring 2019: Stewardship

BY PETER KANTZ

Stewardship is a year round task, a never ending commitment to protecting and enhancing the environment. Invasive plants are removed and native plants brought in. Trails are built and maintained. Grass is cut and trees trimmed. Observation platforms, boardwalks, benches and bike racks are built and maintained. Signage is installed. All of these things are done by GINLC to fulfill our mission to preserve our natural resources and educate the public about the natural environment.

*“Stewardship is a year round task, a never ending commitment to protecting and enhancing the environment.”*

Our stewardship activities involve dozens of volunteers with a wide variety of skills and levels of expertise; from the seasoned veteran to the novice who wants to learn how to protect the environment. Our stewardship volunteers often partner with other organizations such as the Kiwanis, Scouts, and school groups to complete a project.

Not all stewardship tasks require physical labor. Planning, mentoring, engineering, and organizational skills are also needed to maintain and enhance the properties we steward for the USFWS and Grosse Ile Township as well as our own properties.

Without a dedicated group of volunteers and the financial support of generous donors, all of whom recognize the need to protect our environment, our stewardship efforts would not be possible.

We have many stewardship events scheduled throughout the year. Everyone is invited to participate; email us at [info@ginlc.org](mailto:info@ginlc.org) to receive up-to-date notices of stewardship events.



***Progress in the continuing enhancement of Sunrise Park – the second retaining wall south of the stairway was completed last December through a generous donation from a GINLC member. Volunteers will be needed to install plants and trees as part of the finishing touches. Please sign up at [info@ginlc.org](mailto:info@ginlc.org) for dates and times.***

activities should be allowed to be carried out without active EPA oversight.

3. Prior to redevelopment, Phase II and III environmental studies should be conducted to identify all existing contamination at the site, possible pathways of exposure, and effective remediation methods. This will make it possible to align contaminant target concentrations with the EPA's/State of Michigan's clean-up standards and the City of Trenton's property zoning class. This will ultimately dictate the type of redevelopment that can take place at the site.

4. The priority of initial remedial activities should be to mitigate the release of known and unknown subsurface contamination into the Detroit River at the east property boundary, as this is one of the most significant pathways for contaminants to adversely impact human health and the environment. This will likely involve installing a barrier (sheet piling) at the river's edge as well as a series of groundwater collection wells to prevent migration of contaminated groundwater into the Detroit River. There should be no new construction activity on the site until groundwater migration and stormwater run-off to the Detroit River is fully mitigated as any new structures may interfere with the installation of effective systems to deal with this source of pollution.

5. In the event there is a plan to develop the site as a deep-water port any potentially affected sediments should be evaluated as to its chemical composition and level of contamination and, if necessary, be properly disposed of to prevent ships from disturbing the sediments and possibly entrainment of contaminants back into the water column of the Detroit River.

Thank you for the opportunity to provide these recommendations and your consideration of these issues. If you would like to discuss any of these comments in more detail or if we can be of assistance to you in any way, please let us know.



*Above: Naturalist Sabrina Mastroianni describes muskrats' specialized fur that helps keep them warm during the winter. Or is she preparing to throw a "Hail Mary" pass during the annual muskratball game at the GBU? Below: Sabrina presented at Parke Lane in 2018. She returned to Meridian in March and Parke Lane in early April.*



# Naturally Winter

BY SABRINA MASTROIANNI

GINLC's public program events are off to a great start this year! On January 10th, we had our Winter Birds of the Bay program. During the first part of the program, we discussed how birds stay warm in the winter, and the second part was spent looking for birds. Even though it was cold, there were plenty of bird viewing opportunities. From Canvasbacks to Woodpeckers, the group saw a variety of birds that call Grosse Ile home.

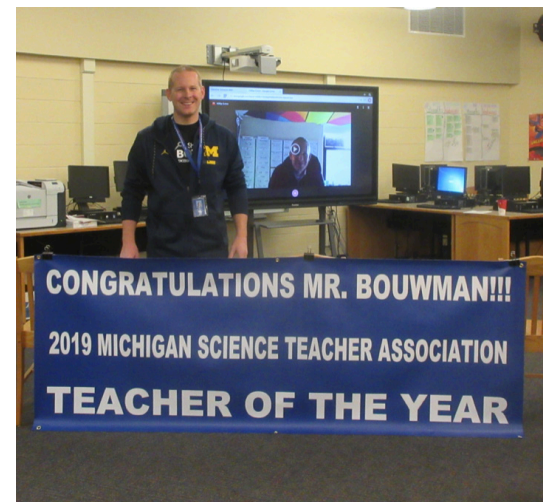
Our second program, Withstanding the Winter, was held on February 10th. This program focused on the different strategies animals have to survive winter's harsh conditions. We talked about how Red-winged Blackbirds migrate south to warmer weather and how woodchucks hibernate during the entire winter season. We also talked about how coyotes and deer, who don't migrate or hibernate, brave the cold by growing thicker fur.

Both programs had an amazing turnout of approximately 45 attendees each! GINLC would like to thank everyone who attended. We encourage you to join us for our upcoming programs through the year!

TOP: BERT URBANI, BOTTOM: NICOLE GARZA

## Exciting Environmental Education at an Elementary School Near You!

Back by popular demand, the GINLC is again providing funding to bring Lake Erie Metropark Naturalist Sabrina Mastroianni to Parke Lane and Meridian Elementary Schools this spring. Sabrina brings hands-on environmental ed to inspire the conservation stewards of tomorrow. *TOPICS INCLUDE: Plant parts, functions and life cycles, Patterns in Nature, Adaptations, and Species interactions.* Students will have the opportunity to learn about the animals in our region through live animals and specimens.



## GINLC Congratulates Member Jeff Bouwman

We asked, “Is it like the Nobel Prize, where they call you up and you think you’re being pranked?”

“I was surprised for sure! I walked into our monthly staff meeting, and the awesome Shumate Staff surprised me with a congratulations banner. This is an amazing honor!,” said Jeff Bouwman, Michigan 2019 Science Teacher of the Year!

Jeff is a 6th and 7th grade science teacher at Shumate Middle School in Gibraltar, as well as an Adjunct Professor at UM-Dearborn. The Gibraltar School District electronic newsletter reported that “Mr. Bouwman was chosen from a pool of thousands of science teachers throughout the state for using and modeling best practices, inspiring students, demonstrating innovative teaching strategies, being an excellent role model for students and other teachers, demonstrating leadership, and exhibiting a passion for science and teaching.”

Jeff has initiated many innovative science programs at Shumate, including NASA’s GLOBE (Global Learning and Observations to Benefit the Environment) Program, WeatherSTEM (a high resolution live-streaming weather camera mounted on Gibraltar School District grounds which was the first in Michigan), and the Michigan Dept. of Natural Resources’ Sturgeon in the Classroom and The Salmon Project. Jeff has formed productive partnerships with NASA and the DNR.

“Programs like these make science come alive and help create contagious enthusiasm in students,” he said. “It’s all about real-world application. I’ve always said you learn science by doing science because science is something you do, not something you Google.”

Jeff is a Grosse Ile resident, husband and father, and a GINLC member. The GINLC is proud that we have contributed funding to some of the projects that he has initiated at Shumate. We are excited that he will be sharing programs, including GLOBE, with his Grosse Ile neighbors this summer. The first GLOBE program will be on Sat May 18 at 1pm at the GBU. Congrats again, Jeff!

*“It’s all about real-world application. I’ve always said you learn science by doing science because science is something you do, not something you Google.”*

# Annual Meeting

BY BERT URBANI

GINLC members gathered on Nov. 10 to learn about the organization's 2018 accomplishments, celebrate the Conservationist of the Year, and hear our guest speaker, Susan White. Accomplishments include the retaining wall north of the stairway at Sunrise Park, generously funded by member John C. Jackson, two Eagle Scout projects, six educational programs, 11 stewardship events, the high school photography contest, Bruce Jones scholarship, as well as hosting the Sunday afternoon Open House events and leading the Monday morning stewardship efforts at the Gibraltar Bay Unit of the Wildlife Refuge. First was the recap of GINLC's 25 years and the anniversary celebration at the Chateau on the River in Elizabeth Park on April 27. A great time was had by all.

## CONSERVATIONIST OF THE YEAR, 2018

Every year the GINLC recognizes an outstanding member of the community for their environmental efforts and presents them with our Conservationist of the Year award. A video made from the photographic archives of the GINLC showed the many members working to protect the natural treasures of Grosse Ile. These photos are a testament to the members engaged in planting trees, conducting water quality tests, fighting invasive species and planting native plants. Working tirelessly to transform the abandoned Nike missile site into the inviting Gibraltar Bay Unit of the International Wildlife Refuge. Many of these same members also worked on saving the Humbug Marsh from development and were instrumental in the formation of the Refuge and the International Wildlife Refuge Alliance. One of the many aspects of the GINLC is acquiring properties to broaden our landscape and protect the natural areas left on the Island. And there is just one original founder who is still working to broaden the landscape of the GINLC, literally, and who is also our Conservationist of the Year. That person is our Vice President of Land Acquisitions, Ingo Hasserodt. Congratulations, Ingo!

## GUEST SPEAKER

Susan White is the new Refuge Manager for the Detroit River International Wildlife Refuge, replacing Dr. John Hartig who retired last year. Susan has spent the last 30 years in conservation management in the Caribbean and Florida, and, most recently, managing wildlife refuges and marine monuments in the remote Pacific, while based out of Hawaii. What (in the world) brings her from Hawaii to Michigan?



*Above: GINLC's original founders cut the cake at the 25th anniversary celebration. Center: GINLC President Peter Kantz presents Ingo Hasserodt with the 2018 Conservationist of the Year award. Below: Refuge Manager Susan White answered questions about the Visitor Center at the Detroit River International Wildlife Refuge. She noted that contractors for the bonding company continue work to solve problems with the sewer line while making progress on the interior.*







*Left: Susan and a Refuge System staff member from DC at the Palmyra Atoll NWR in the Pacific Remote Islands Marine National Monument. Center: Marine debris on uninhabited Laysan Island in the Hawaiian Islands Refuge in Papahānaumokuākea MNM.*



*Laysan albatross at Midway Atoll NWR in Papahānaumokuākea Marine National Monument*

She grew up in Macomb County and wanted to be back near her family and also to be part of the only international wildlife refuge in North America that is being created right in our backyard. She regaled attendees with fascinating stories of the Pacific Island refuges, including Midway Island, that are so remote it takes 4 days to reach some of these islands by boat. Scattered across the Pacific Ocean, from Hawaii to Guam and the Mariana Islands (closer to Japan than California!), the refuges span 5 time zones and three hemispheres. Many of these islands are the primary nesting grounds of 22 species of seabirds such as Laysan and Black-footed albatross, Red-footed and Masked boobies, Red- and White-tailed tropic birds, millions of Sooty terns, noddies, and petrels. Seabirds around the world are threatened by overwhelming plastic pollution, invasive species, and rising and warming seas from man-made climate change. Just like our International Wildlife Refuge, Susan explained that refuge staff in the remote Pacific are working to combat these threats and restore habitats so the wildlife on the islands and coral reefs can be more resilient to these impacts.

Susan answered questions and noted that the entire Refuge Gateway property remains closed while work on the Visitor Center continues. Contractors for the bonding company continue work to solve problems with the sewer line while making progress on the interior. Contracted landscapers should be returning to the site soon for seeding, as the weather warms up.

Besides being the new Refuge Manager, Susan is also a new resident of Grosse Ile. Welcome, neighbor!



**This is your lawn.**



**This is drugs.**



**This is your lawn on drugs.**

Have a Healthy Lawn this Spring! Stay away from drugs (i.e. toxic chemicals). Have your lawn tested to see if it really needs nutrients, and if it does, use only NO or LOW PHOSPHORUS, only SLOW RELEASE, do not use WEED & FEED, and STAY AWAY FROM THE RIVER (15-25 feet). Mowing — CUT IT HIGH (3”) & LET IT LIE (Leave the clippings on the lawn.) WATER between 10am & 2pm, 1/2 to 1 inch per week. Do CORE AERATION, DO NOT DE-THATCH! Reduce the amount of turf grass to what your family needs to play on, and plant native plants instead.

## GINLC WELCOMES RETURNING BOARD MEMBERS



**DOUG THIEL** is returning as a GINLC board member after an obligatory one year off after his second three consecutive three-year terms (total 18 years on the board!). During that year, Doug stayed active with the GINLC and we are happy to have him back in an official capacity.

Doug is a 24-year resident of Grosse Ile, an owner of natural areas up north, and a BASF retiree. Doug's expertise in habitat restoration, chemistry, and emergency response are invaluable to the GINLC's programs.

### THANK YOU, FRED

*GINLC thanks retiring board member Fred Pepper for his dedication to Grosse Ile's natural environment. Fred has served as a board member several times. We miss seeing Fred and Jill on the island and wish them well in their new home.*



**“Alert: plant milkweed to feed the monarch butterflies on their migration.”**

**INGO HASSERODT** returns to full board membership, although he remained GINLC Vice President of Land Acquisitions while off the board. Welcome back, Ingo!

Congratulations are also due to Ingo, as he was awarded the GINLC Conservationist of the Year at the 2018 Annual Meeting. (See page 8 for more about Ingo and the COTY award.)

## HELP WANTED!

*GINLC needs volunteers in the following areas:*

- ➔ **Sunday afternoon hosts** at the GBU, 1-4pm, May 5 – Oct 27.
- ➔ **Stewardship** – Monday mornings 9am-12pm at the GBU, various Saturday mornings around Grosse Ile.
- ➔ **Administrative** – writing articles/proofreading the newsletter, help with mailings, etc.

**CHARACTERISTICS:** There are 58 species of porcupines, divided into New World and Old World species. North American porcupines are rodents that average 20 pounds and are 2 – 3 feet in length, with a tail that is 6 to 12 inches long. Their coloring is dark brown or black, with white highlights. In “The Columbus Dispatch” naturalist Jim McCormac says they “bristle with a formidable coat of 30,000 sharp quills. It’s a grand defense system, and ‘porkies’ waddle with an unhurried gait, confident in their armor. Contrary to popular myth, porkies can’t catapult their quills at tormentors. When cornered, they try to swat the aggressor with their tail, and the easily detached quills readily penetrate flesh. Small barbs at the quill’s tip expand in reaction to body heat, making extraction difficult.” They are the only North American mammal with



*A Cape Porcupine (Hystrix africaeaustralis), photographed at the Daktari Bush School & Wildlife Orphanage in South Africa, is a different species and looks very different from our North American porcupines.*

antibiotics in their skin, which staves off infections that can happen when they fall out of trees and injure themselves with their own quills.

from trunks and branches.” Their foliage diet is high in potassium and low in sodium. This imbalance creates a craving for salt that frustrates humans as it frequently results in their consumption of road-salt-crusts backpackers’ boots, sweaty gloves and tool handles, and plywood treated with salts.

**LIFESTYLE:** Because of their impressive defense system, porkies are fairly solitary compared to other herbivores. The female cares for the young through their first winter. Mate selection occurs in trees, but mating takes place on the ground. As you might expect, it’s done carefully; both partners tighten their skin and hold their quills flat to avoid injuries. Gestation takes 202 days and babies are born with soft quills which harden shortly after birth.

**VIEWING OPPORTUNITIES:** Keep your eyes peeled when walking in the natural areas of Grosse Ile, or even your own backyard. Look up; if there are porkies here, they might be in trees! Let us know at [info@ginlc.org](mailto:info@ginlc.org) if you spot one (and take a photo!).

## This is “LITTERally” a Mess!



GINLC member and one of our original founders, Phil Phillips, submitted this photo of unsolicited flyers in plastic bags on his street. These are tossed on driveways where they end up driven on, mangled, and left to deteriorate and pollute the environment. What do you think should be done about this? Your comments are welcome at [info@ginlc.org](mailto:info@ginlc.org).



### KROGER CARDS

Enroll your Kroger Plus card to benefit the Grosse Ile Nature & Land Conservancy!

Go to [www.kroger.com/communityrewards](http://www.kroger.com/communityrewards) to enroll or re-enroll. (Be sure to renew in April!) Thanks!



### AMAZON SMILE

Don’t forget to smile — Sign up for Amazon Smile! Select Grosse Ile Nature & Land Conservancy as your charitable organization, and then 0.5% of the purchase price of eligible products will be donated to GINLC.

# Don't miss these *Spring* events!

## Earth Day

ON GROSSE ILE

Sunday, April 28, 2 – 5 pm  
Centennial Farm

### PRESENTERS INCLUDE:

- Susan White, Detroit River Int'l Wildlife Refuge
- Anita Twardesky, Downriver Linked Greenways
- Doug Thiel, McLouth Steel site demolition
- State Rep Darrin Camilleri, Lansing update

Live animals from Lake Erie Metropark!  
Kids' activities including Make a  
"Root Man" Plant Pot, pond study,  
Tree ID Walk, and more!



## GINLC Photo Contest

All local high school students are eligible.  
Cash prizes. **Deadline: May 9, 2019**

### CATEGORIES: (all digital)

- Creatures, Critters & Crawly Things
- Amazing Moments
- Patterns & Textures

Visit [www.ginlc.org](http://www.ginlc.org)  
and click on  
Photo Contest for  
entry form and  
details.

**TAKE IT OUTSIDE**  
Open to all high school students

Nature & Wildlife Photo Contest  
2018-2019

Students may enter photos captured locally that inspire us to appreciate and steward our environment: air, water, land, wildlife, resources and ecosystems.

Photo Credit: Paige Hutchings Grosse Ile

3 Categories:  
Creatures, Critters & Crawly Things  
Amazing Moments  
Patterns & Textures

\$100 / Grand Prize  
\$50 / FIRST Place in each category  
\$40 / SECOND Place in each category  
\$25 / THIRD Place in each category

Contest is limited to one entry per category. \*Total 3 per student.  
Enter starting Oct. 1, 2018. Deadline: Thurs, May 9, 2019.  
All Digital. Enter at [www.ginlc.org](http://www.ginlc.org). Click on 'Photo Contest' for entry form.

Sponsored by the Grosse Ile Nature and Land Conservancy [www.ginlc.org](http://www.ginlc.org)

TO RECEIVE EVENT NOTICES & NEWSLETTERS BY EMAIL, CONTACT US AT [INFO@GINLC.ORG](mailto:INFO@GINLC.ORG)



To sign up for a  
work party call,  
PETER KANTZ  
734-558-2149

To make a  
donation call,  
JOHN LEON  
734-671-0125

Non-Profit  
Organization  
U.S. POSTAGE  
**PAID**  
PERMIT NO. 99  
GROSSE ILE, MI

To Promote for the public benefit the preservation,  
stewardship and understanding of the natural resources in  
the Township of Grosse Ile and surrounding area

**DIRECTORS and OFFICERS**

[www.ginlc.org](http://www.ginlc.org)  
734-588-2149  
Grosse Ile, MI 48138  
P.O. Box 12

Peter Kantz, President  
Guido Colarossi, Vice-President  
John Leon, Treasurer  
Jordan Thompson, Secretary  
Alan Cavrell  
Rika Erikson  
Pamela A. Frucci  
Paul Gloor  
Susie Harrison  
Ingo Hasserodt, VP Acquisitions  
Liz Hugel  
Madelaine Jones  
Eric Michael  
Greg Roginski  
Steve Schweickart  
Courtney Solenberger-McNeill  
Doug Thiel  
Bert Urban, Newsletter Editor  
Denise Zielinski

