

weber.therm XM

NOTES: Installation to comply with **Weber** printed instructions / for 'as specified' items refer to contract documents



CERTIFICATE NO. 06/0260

CLIENT	Library	Date	06/03/09	Scale	NTS
PROJECT	Typical Details	Ref			
DWG TITLE	Mesh Reinforcement At Opening.	Drawn	KJG	Checked	IC
		No	K-00-51		

Saint-Gobain Weber Limited

GB/Head Office: Dickens House, Enterprise Way, FLITWICK, Bedford MK45 5BY
 Ireland: The Old Paper Mill, BALLYCLARE, Co. Antrim, NI BT39 9EB

Tel: + 44 (0)1525 718 877 Fax: +44 (0) 1525 718 988
 Tel: + 44 (0)2893 343 700 Fax: +44 (0) 2893 323 232

weber.therm XM System comprising:

- weber.therm insulant
- 6mm meshcloth coat (weber.rend LAC and weber.mesh standard)
- weber PR310 primer
- synthetic finish (plain or textured) (textured synthetic finish shown).
- or
- weber.therm insulant
- 6mm meshcloth coat
- 6mm weber.rend PTC or weber.rend PTS
- dry dash or scraped texture finish
- or
- weber.therm insulant
- 6mm meshcloth coat
- 6mm weber.rend PTC
- weber PR310 primer
- synthetic finish (plain or textured)

Insulation type & thickness to be as specified

Indicative line of substrate. Surface prepared as specified.

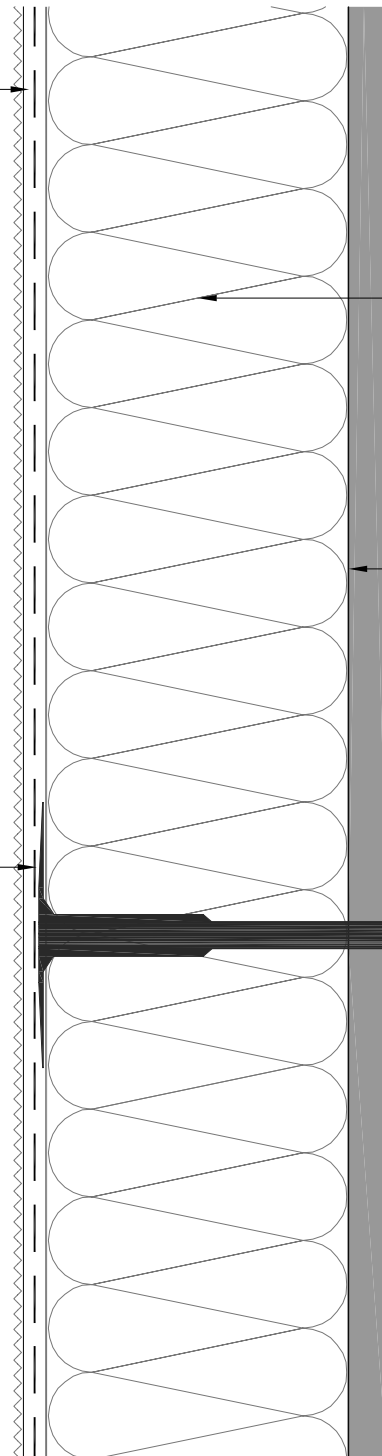
Main wall fixings as appropriate for substrate.
 Drill & drive positive expansion fixings for masonry substrates.
 Screw fixings with restraining washer to panel areas.

NOTES:

Heavy duty meshcloth may be incorporated from base bead level to 2m up where additional impact resistance is required.

Where required / specified, main wall area fire fixings to be inserted through meshcloth coat at a rate of 1/m².

Meshcloth patch to be applied over head of main wall fire fixing when applying 2nd pass of weber.rend LAC .



weber.therm XM

NOTES: Installation to comply with **Weber** printed instructions / for 'as specified' items refer to contract documents

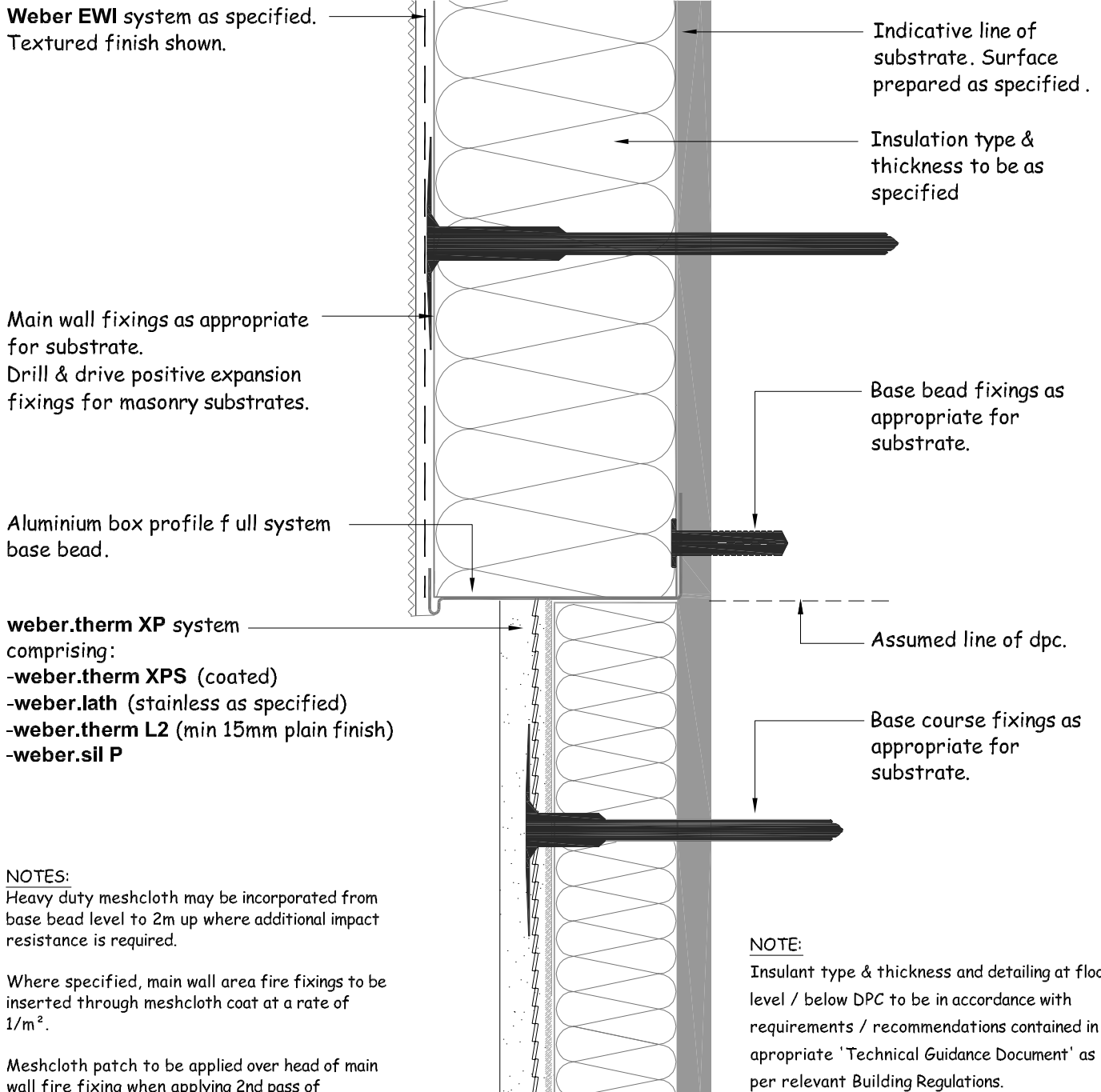
CERTIFICATE NO. 06/0260

CLIENT	Library	Date	06/03/09	Scale	1:2
PROJECT	Typical Details	Ref			
DWG TITLE	Detail Section - Main Wall	Drawn	KJG	Checked	IC
		No	K-01-02		

Saint-Gobain Weber Limited

GB/Head Office: Dickens House, Enterprise Way, FLITWICK, Bedford MK45 5BY
 Ireland: The Old Paper Mill, BALLYCLARE, Co. Antrim, NI BT39 9EB

Tel: + 44 (0)1525 718 877 Fax: +44 (0) 1525 718 988
 Tel: + 44 (0)2893 343 700 Fax: +44 (0) 2893 323 232



weber.therm XM

NOTES: Installation to comply with **Weber** printed instructions / for 'as specified' items refer to contract documents



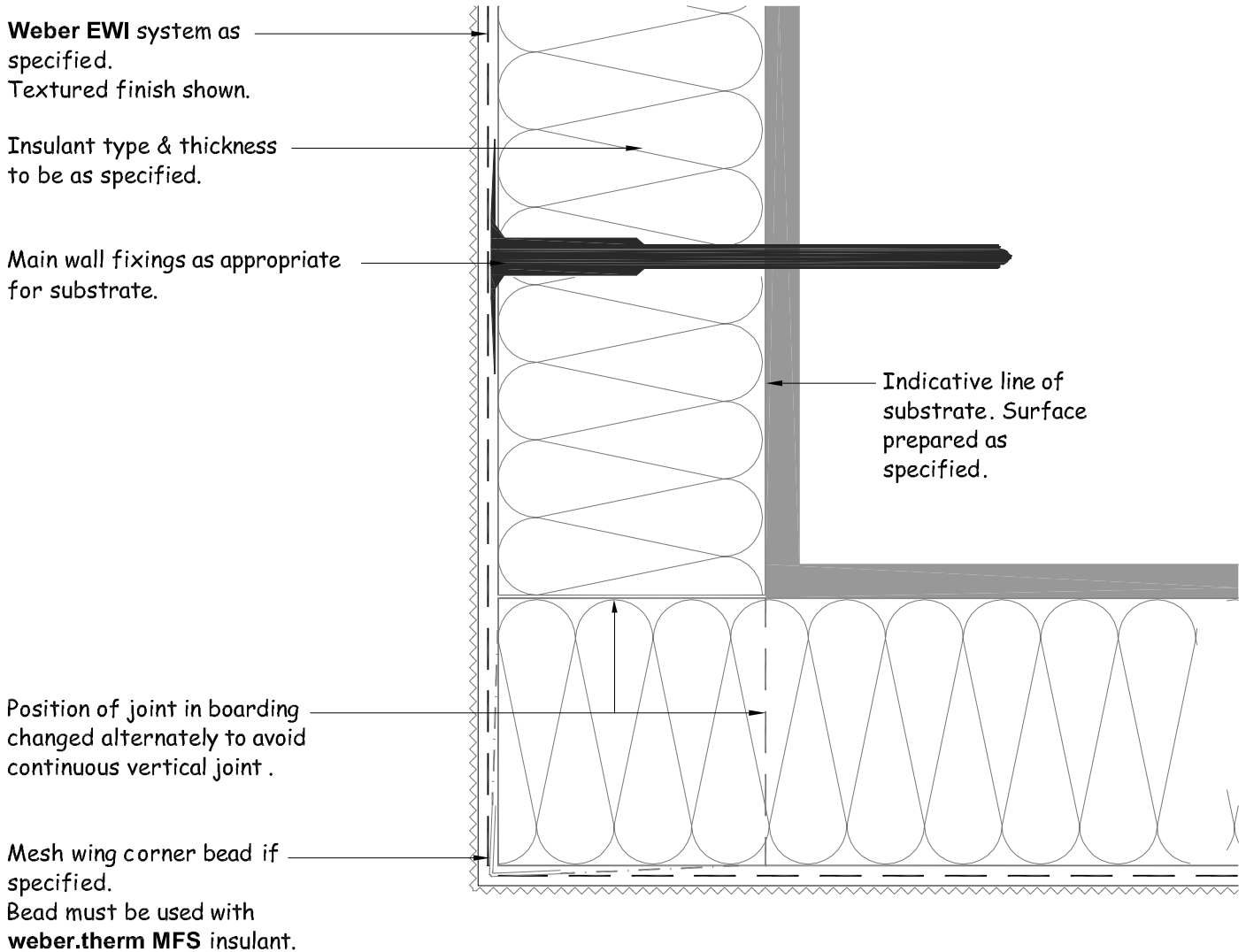
CERTIFICATE NO. 06/0260

CLIENT	Library	Date	06/03/09	Scale	1:2
PROJECT	Typical Details	Ref			
DWG TITLE	Detail Section - F. S. Base Bead (Box Profile) Insulated Base	Drawn	KJG	Checked	IC
		No	K-02-11a		

Saint-Gobain Weber Limited

GB/Head Office: Dickens House, Enterprise Way, FLITWICK, Bedford MK45 5BY
Ireland: The Old Paper Mill, BALLYCLARE, Co. Antrim, NI BT39 9EB

Tel: + 44 (0)1525 718 877 Fax: +44 (0) 1525 718 988
Tel: + 44 (0)2893 343 700 Fax: +44 (0) 2893 323 232



weber.therm XM

NOTES: Installation to comply with **Weber** printed instructions / for 'as specified' items refer to contract documents



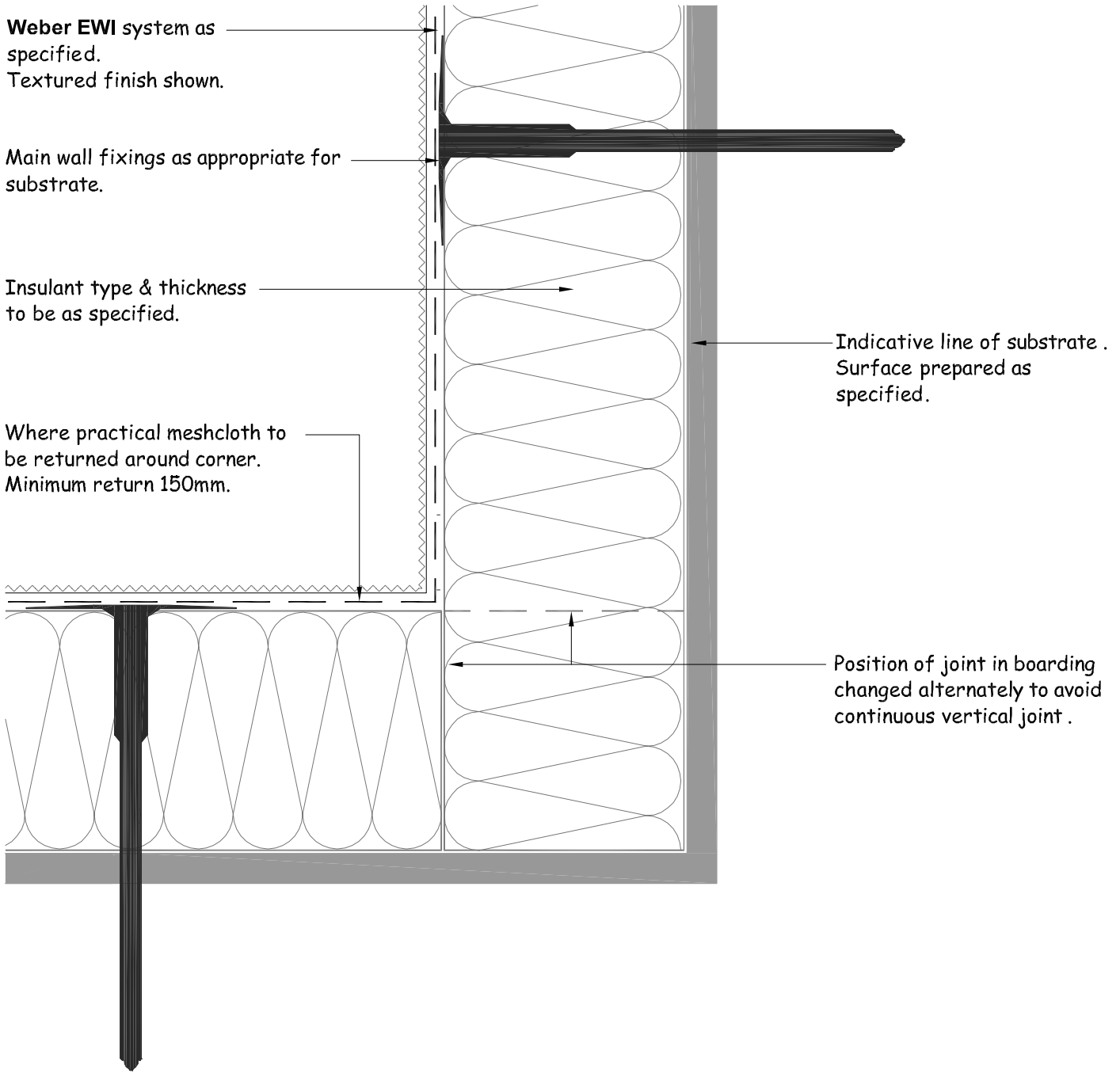
CERTIFICATE NO. 06/0260

CLIENT	Library	Date	06/03/09	Scale	1:2
PROJECT	Typical Details	Ref			
DWG TITLE	Detail Plan - External Corner	Drawn	KJG	Checked	IC
		No	K-03-01a		

Saint-Gobain Weber Limited

GB/Head Office: Dickens House, Enterprise Way, FLITWICK, Bedford MK45 5BY
Ireland: The Old Paper Mill, BALLYCLARE, Co. Antrim, NI BT39 9EB

Tel: + 44 (0)1525 718 877 Fax: +44 (0) 1525 718 988
Tel: + 44 (0)2893 343 700 Fax: +44 (0) 2893 323 232



weber.therm XM

NOTES: Installation to comply with **Weber** printed instructions / for 'as specified' items refer to contract documents



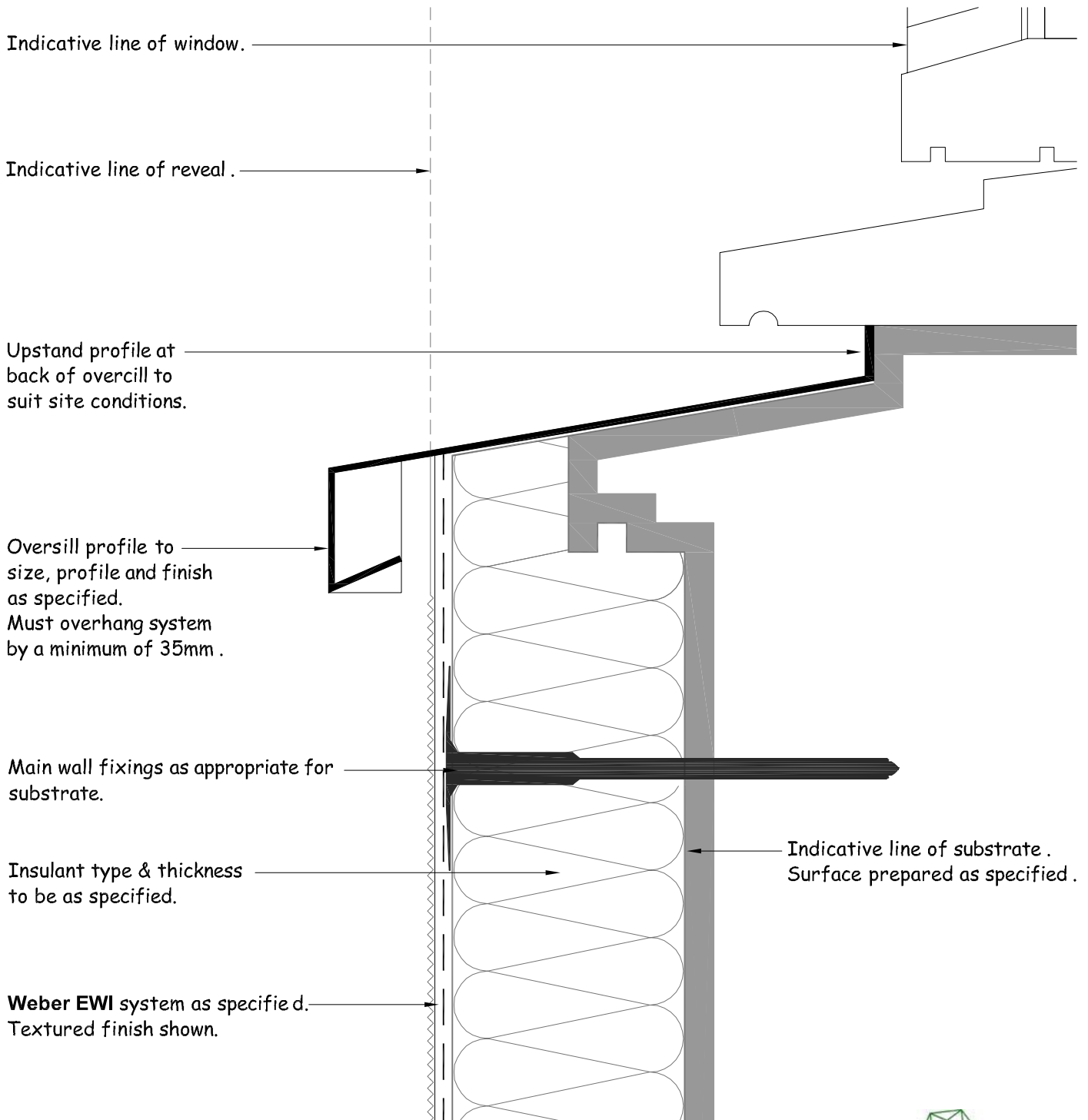
CERTIFICATE NO. 06/0260

CLIENT	Library	Date	06/03/09	Scale	1:2
PROJECT	Typical Details	Ref			
DWG TITLE	Detail Plan - Internal Corner	Drawn	KJG	Checked	IC
		No	K-04-01a		

Saint-Gobain Weber Limited

GB/Head Office: Dickens House, Enterprise Way, FLITWICK, Bedford MK45 5BY
Ireland: The Old Paper Mill, BALLYCLARE, Co. Antrim, NI BT39 9EB

Tel: + 44 (0)1525 718 877 Fax: +44 (0) 1525 718 988
Tel: + 44 (0)2893 343 700 Fax: +44 (0) 2893 323 232



weber.therm XM

NOTES: Installation to comply with **Weber** printed instructions / for 'as specified' items refer to contract documents



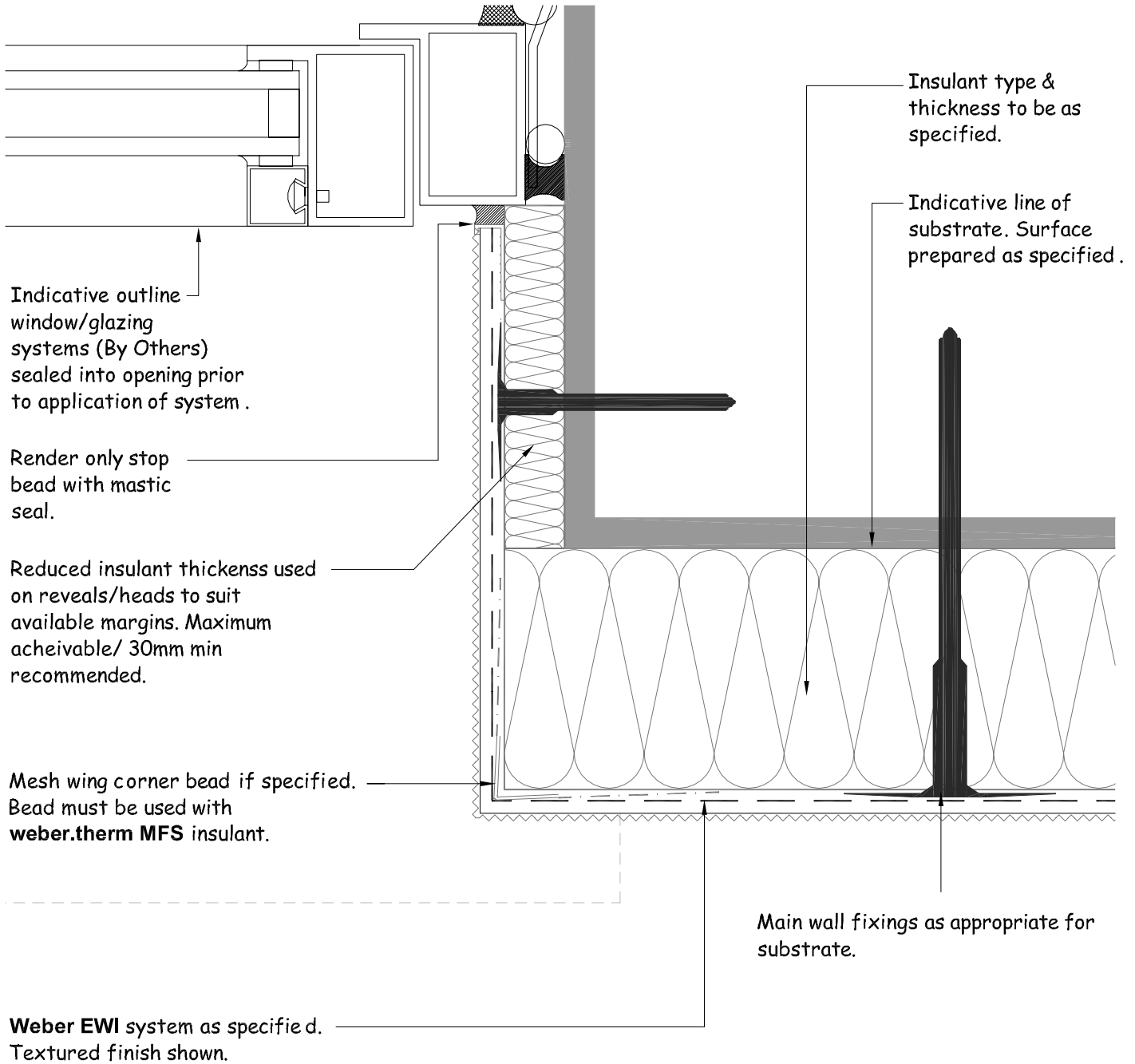
CERTIFICATE NO. 06/0260

CLIENT	Library	Date	06/03/09	Scale	1:2
PROJECT	Typical Details	Ref			
DWG TITLE	Detail Section - Overcill	Drawn	KJG	Checked	IC
		No	K-05-31		

Saint-Gobain Weber Limited

GB/Head Office: Dickens House, Enterprise Way, FLITWICK, Bedford MK45 5BY
Ireland: The Old Paper Mill, BALLYCLARE, Co. Antrim, NI BT39 9EB

Tel: + 44 (0)1525 718 877 Fax: +44 (0) 1525 718 988
Tel: + 44 (0)2893 343 700 Fax: +44 (0) 2893 323 232



weber.therm XM

NOTES: Installation to comply with **Weber** printed instructions / for 'as specified' items refer to contract documents



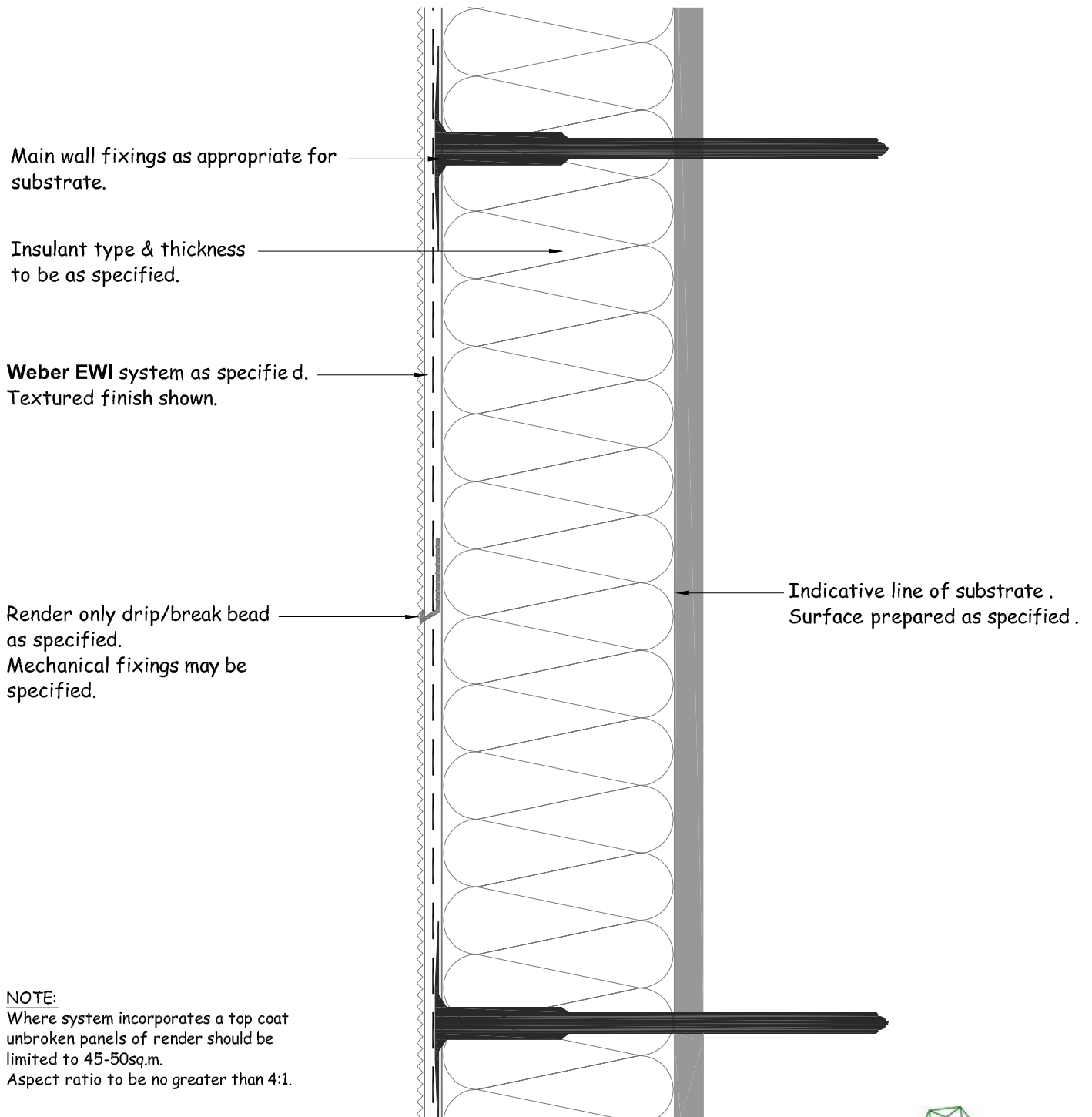
CERTIFICATE NO. 06/0260

CLIENT	Library	Date	06/03/09	Scale	1:2
PROJECT	Typical Details	Ref			
DWG TITLE	Detail Plan - Insulated Reveal (Bead + Mastic)	Drawn	KJG	Checked	IC
		No	K-06-03a		

Saint-Gobain Weber Limited

GB/Head Office: Dickens House, Enterprise Way, FLITWICK, Bedford MK45 5BY
Ireland: The Old Paper Mill, BALLYCLARE, Co. Antrim, NI BT39 9EB

Tel: + 44 (0)1525 718 877 Fax: +44 (0) 1525 718 988
Tel: + 44 (0)2893 343 700 Fax: +44 (0) 2893 323 232



weber.therm XM

NOTES: Installation to comply with **Weber** printed instructions / for 'as specified' items refer to contract documents



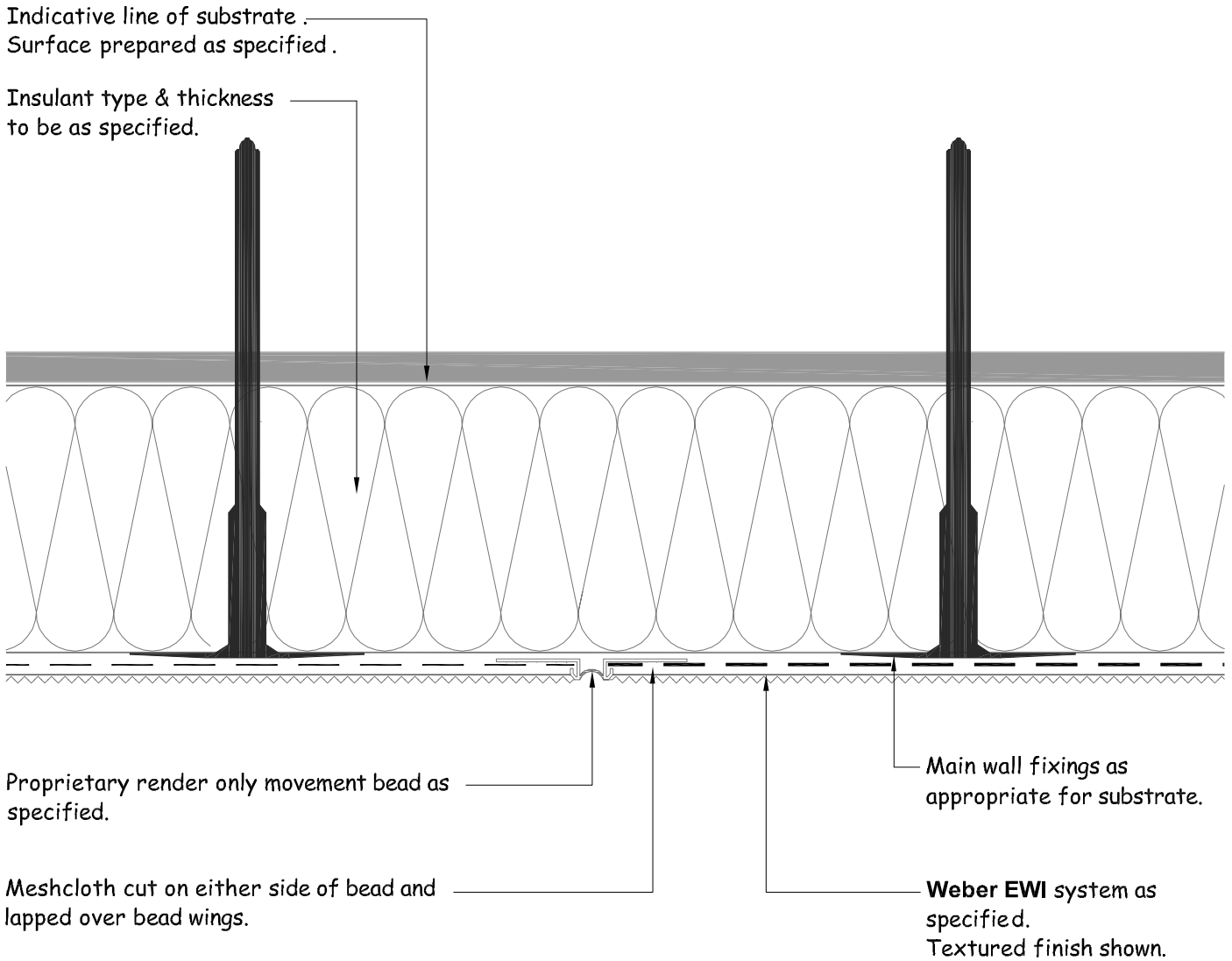
CERTIFICATE NO. 06/0260

CLIENT	Library	Date	06/03/09	Scale	1:2
PROJECT	Typical Details	Ref			
DWG TITLE	Detail Section - Horizontal Drip Bead.	Drawn	KJG	Checked	IC
		No	K-08-02		

Saint-Gobain Weber Limited

GB/Head Office: Dickens House, Enterprise Way, FLITWICK, Bedford MK45 5BY
Ireland: The Old Paper Mill, BALLYCLARE, Co. Antrim, NI BT39 9EB

Tel: + 44 (0)1525 718 877 Fax: +44 (0) 1525 718 988
Tel: + 44 (0)2893 343 700 Fax: +44 (0) 2893 323 232



NOTE:
Where system incorporates a top coat
unbroken panels of render should be
limited to 45-50sq.m.
Aspect ratio to be no greater than 4:1.

weber.therm XM

NOTES: Installation to comply with **Weber** printed instructions / for 'as specified' items refer to contract documents



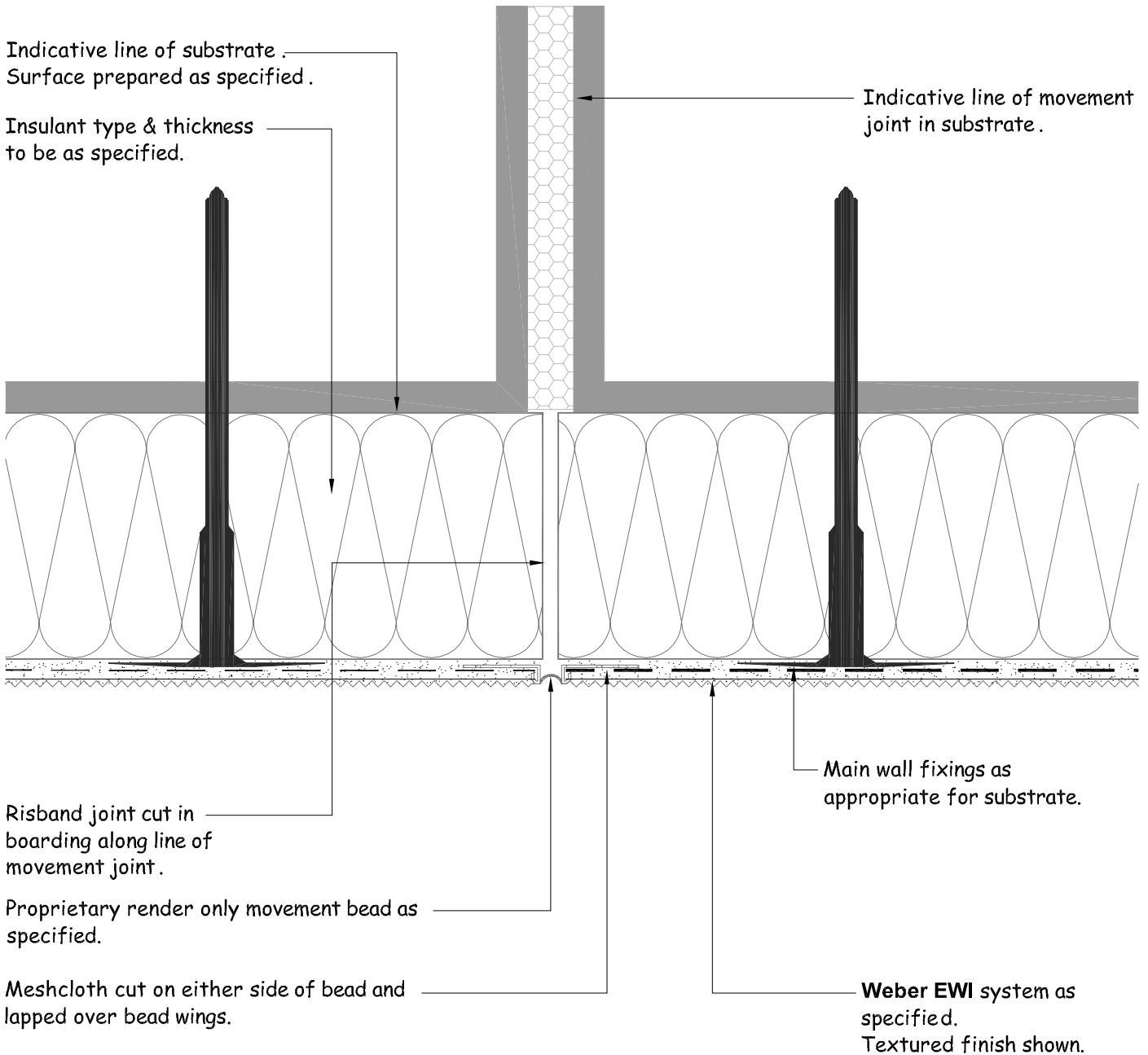
CERTIFICATE NO. 06/0260

CLIENT	Library	Date	06/03/09	Scale	1:2
PROJECT	Typical Details	Ref			
DWG TITLE	Detail Plan - Vertical Break Bead	Drawn	KJG	Checked	IC
		No	K-09-02		

Saint-Gobain Weber Limited

GB/Head Office: Dickens House, Enterprise Way, FLITWICK, Bedford MK45 5BY
Ireland: The Old Paper Mill, BALLYCLARE, Co. Antrim, NI BT39 9EB

Tel: + 44 (0)1525 718 877 Fax: +44 (0) 1525 718 988
Tel: + 44 (0)2893 343 700 Fax: +44 (0) 2893 323 232



NOTE:

Where system incorporates a top coat unbroken panels of render should be limited to 45-50sq.m.
Aspect ratio to be no greater than 4:1.

weber.therm XM

NOTES: Installation to comply with **Weber** printed instructions / for 'as specified' items refer to contract documents



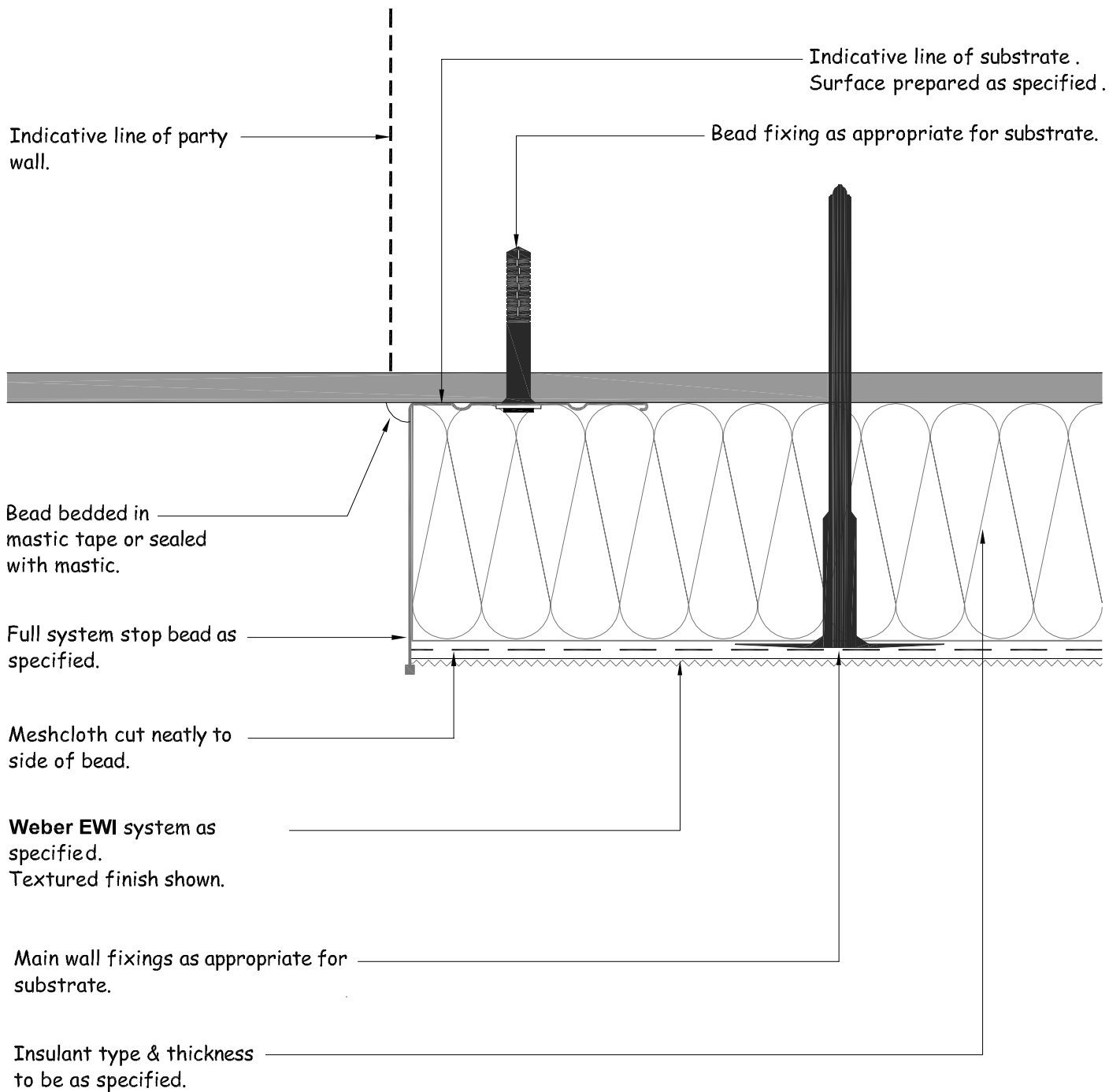
CERTIFICATE NO. 06/0260

CLIENT	Library	Date	06/03/09	Scale	1:2
PROJECT	Typical Details	Ref			
DWG TITLE	Detail Plan - Vertical Movement Joint (Bead)	Drawn	KJG	Checked	IC
		No	K-09-13		

Saint-Gobain Weber Limited

GB/Head Office: Dickens House, Enterprise Way, FLITWICK, Bedford MK45 5BY
Ireland: The Old Paper Mill, BALLYCLARE, Co. Antrim, NI BT39 9EB

Tel: + 44 (0)1525 718 877 Fax: +44 (0) 1525 718 988
Tel: + 44 (0)2893 343 700 Fax: +44 (0) 2893 323 232



weber.therm XM

NOTES: Installation to comply with **Weber** printed instructions / for 'as specified' items refer to contract documents



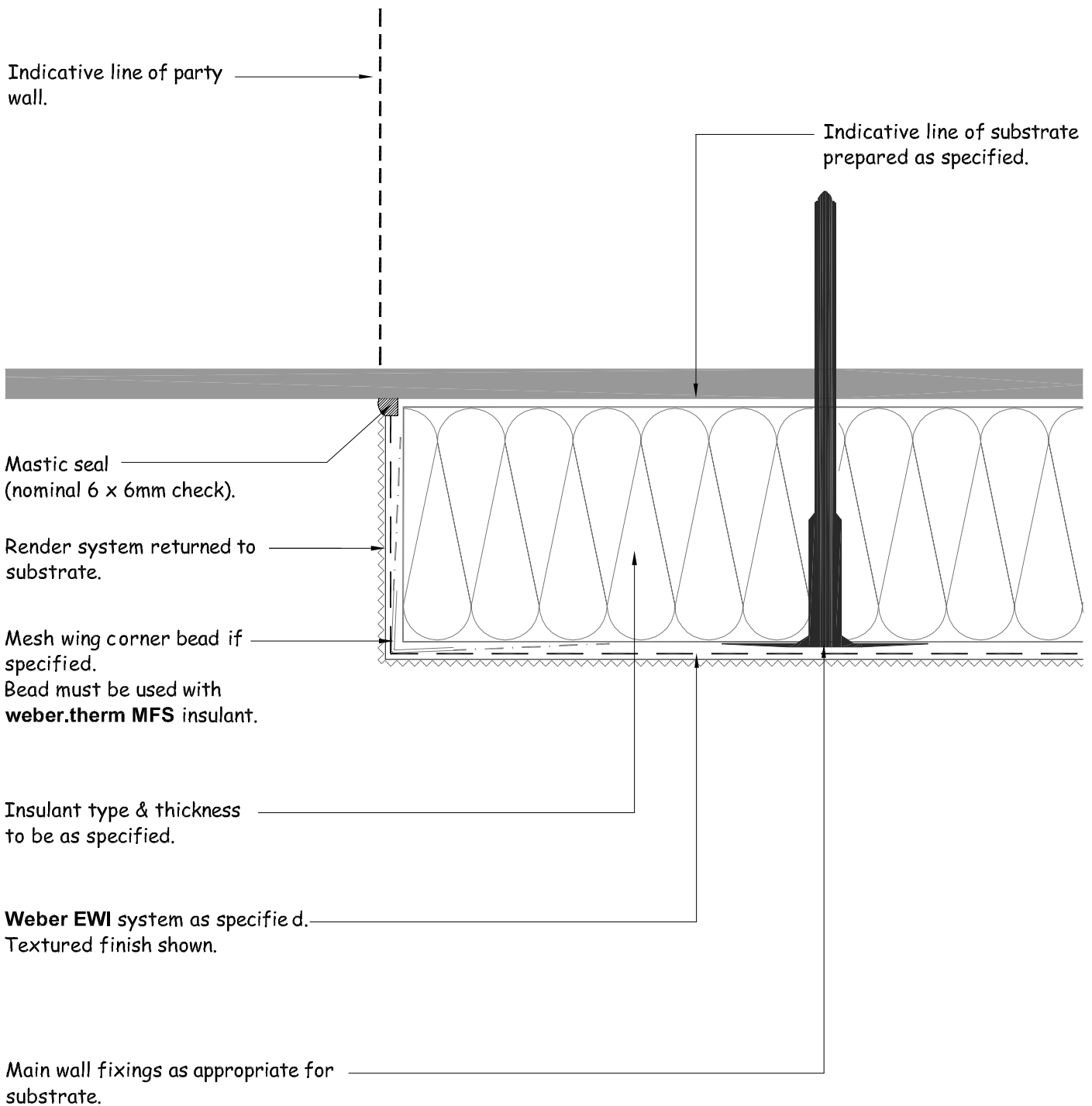
CERTIFICATE NO. 06/0260

CLIENT	Library	Date	06/03/09	Scale	1:2
PROJECT	Typical Details	Ref			
DWG TITLE	Detail Plan - Full System Stop Bead	Drawn	KJG	Checked	IC
		No	K-09-21		

Saint-Gobain Weber Limited

GB/Head Office: Dickens House, Enterprise Way, FLITWICK, Bedford MK45 5BY
Ireland: The Old Paper Mill, BALLYCLARE, Co. Antrim, NI BT39 9EB

Tel: + 44 (0)1525 718 877 Fax: +44 (0) 1525 718 988
Tel: + 44 (0)2893 343 700 Fax: +44 (0) 2893 323 232



weber.therm XM

NOTES: Installation to comply with **Weber** printed instructions / for 'as specified' items refer to contract documents



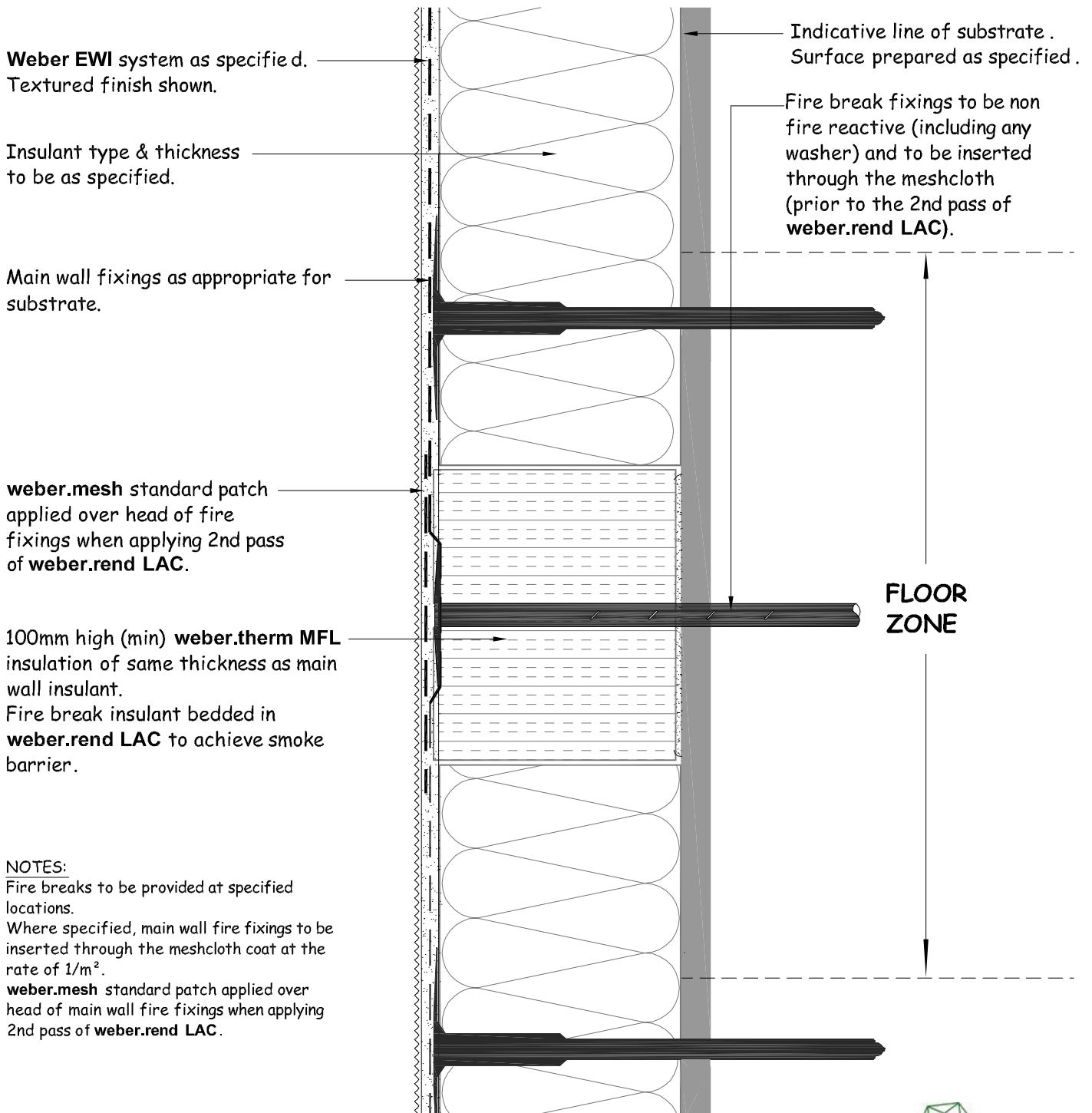
CERTIFICATE NO. 06/0260

CLIENT	Library	Date	06/03/09	Scale	1:2
PROJECT	Typical Details	Ref			
DWG TITLE	Detail Plan - Rendered Vertical Stop.	Drawn	KJG	Checked	IC
		No	K-09-31		

Saint-Gobain Weber Limited

GB/Head Office: Dickens House, Enterprise Way, FLITWICK, Bedford MK45 5BY
Ireland: The Old Paper Mill, BALLYCLARE, Co. Antrim, NI BT39 9EB

Tel: + 44 (0)1525 718 877 Fax: +44 (0) 1525 718 988
Tel: + 44 (0)2893 343 700 Fax: +44 (0) 2893 323 232



NOTES:

Fire breaks to be provided at specified locations.
 Where specified, main wall fire fixings to be inserted through the meshcloth coat at the rate of 1/m².
weber.mesh standard patch applied over head of main wall fire fixings when applying 2nd pass of **weber.rend LAC**.

weber.therm XM

NOTES: Installation to comply with **Weber** printed instructions / for 'as specified' items refer to contract documents



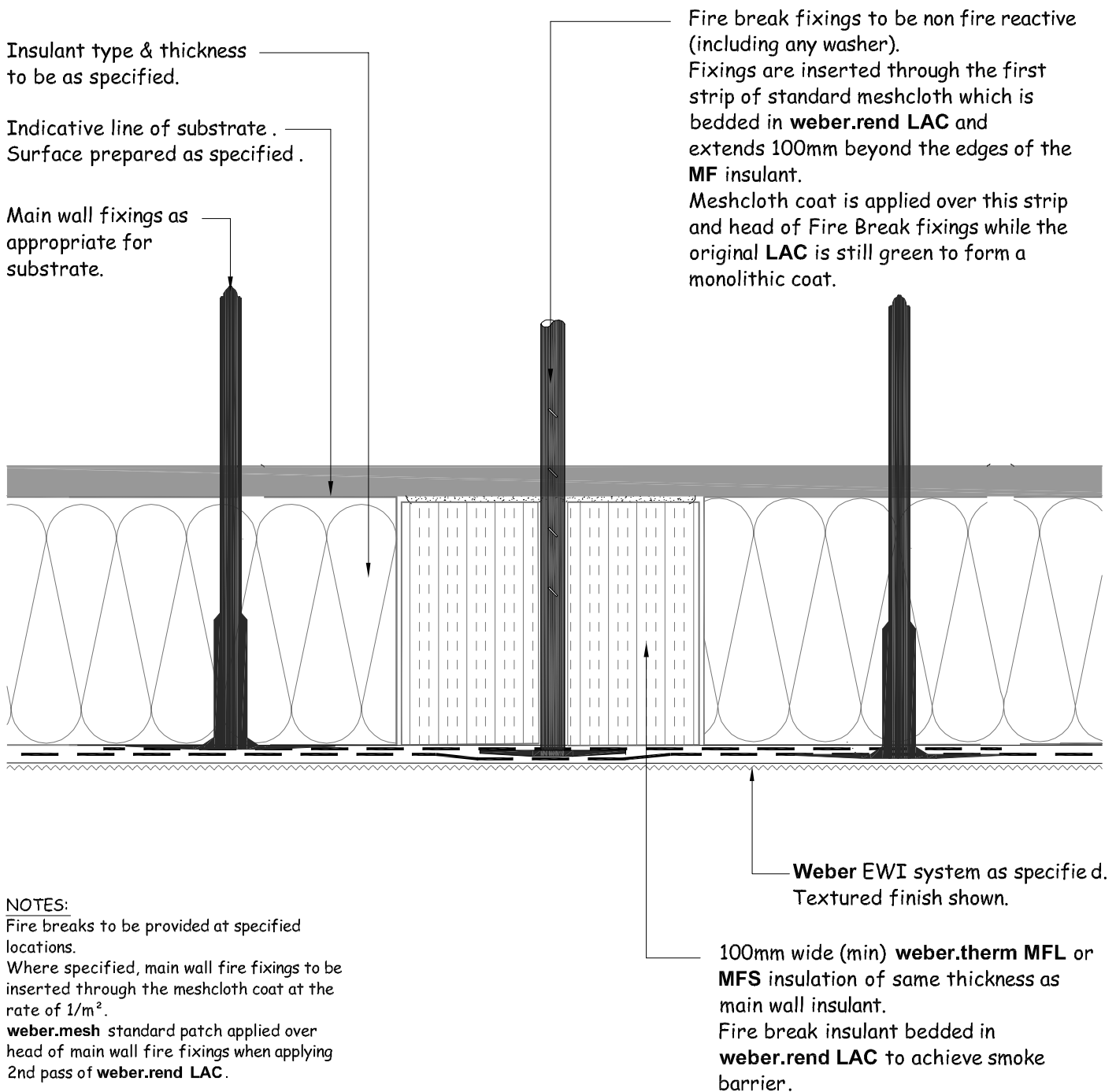
CERTIFICATE NO. 06/0260

CLIENT	Library	Date	06/03/09	Scale	1:2
PROJECT	Typical Details	Ref			
DWG TITLE	Detail Section - Horizontal Fire Break	Drawn	KJG	Checked	IC
		No	K-10-01a		

Saint-Gobain Weber Limited

GB/Head Office: Dickens House, Enterprise Way, FLITWICK, Bedford MK45 5BY
 Ireland: The Old Paper Mill, BALLYCLARE, Co. Antrim, NI BT39 9EB

Tel: + 44 (0)1525 718 877 Fax: +44 (0) 1525 718 988
 Tel: + 44 (0)2893 343 700 Fax: +44 (0) 2893 323 232



NOTES:

Fire breaks to be provided at specified locations.
 Where specified, main wall fire fixings to be inserted through the meshcloth coat at the rate of 1/m².
weber.mesh standard patch applied over head of main wall fire fixings when applying 2nd pass of **weber.rend LAC**.

weber.therm XM

NOTES: Installation to comply with **Weber** printed instructions / for 'as specified' items refer to contract documents



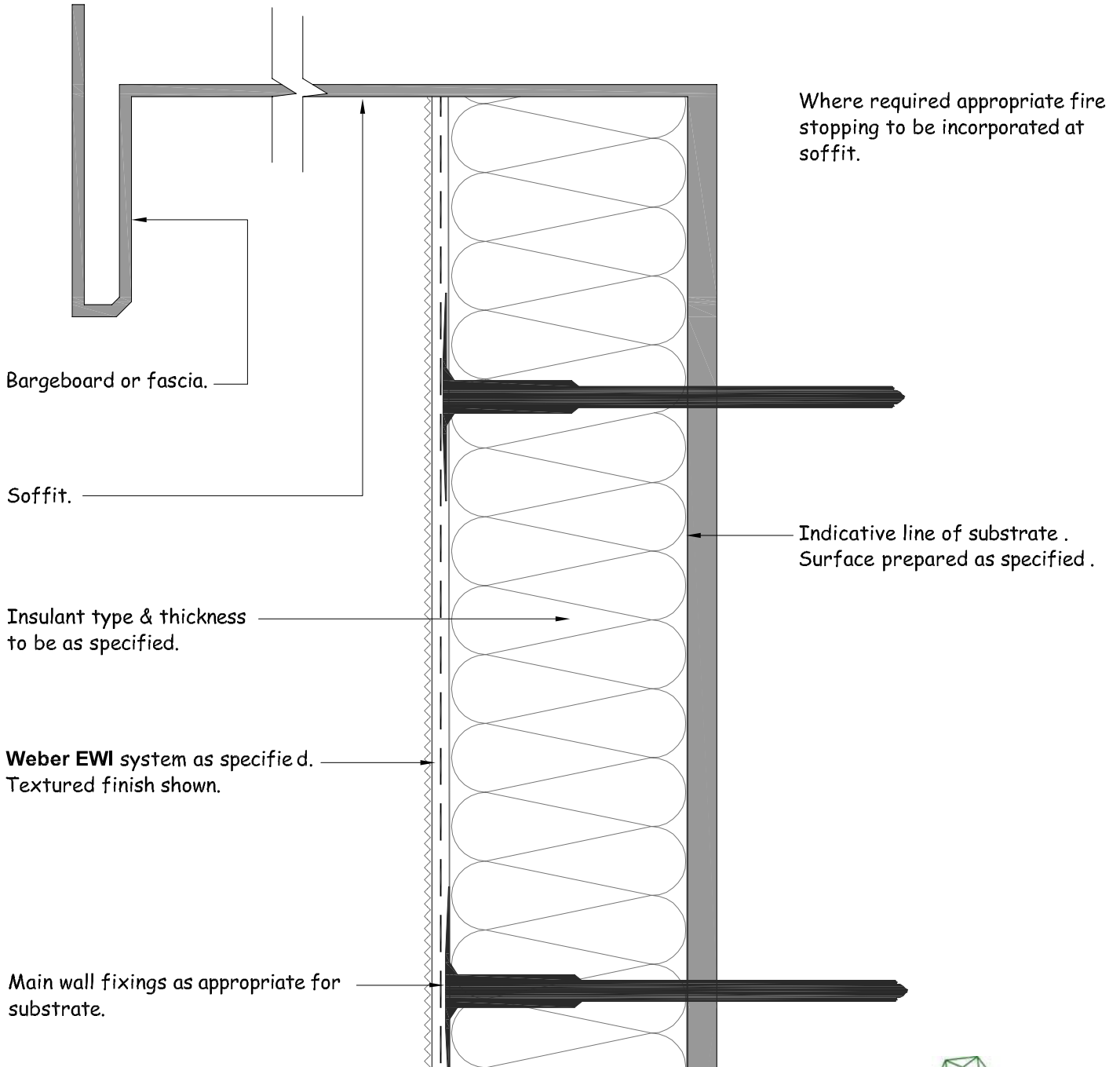
CERTIFICATE NO. 06/0260

CLIENT	Library	Date	06/03/09	Scale	1:2
PROJECT	Typical Details	Ref			
DWG TITLE	Detail Section - Vertical Fire Break	Drawn	KJG	Checked	IC
		No	K-10-11		

Saint-Gobain Weber Limited

GB/Head Office: Dickens House, Enterprise Way, FLITWICK, Bedford MK45 5BY
 Ireland: The Old Paper Mill, BALLYCLARE, Co. Antrim, NI BT39 9EB

Tel: + 44 (0)1525 718 877 Fax: +44 (0) 1525 718 988
 Tel: + 44 (0)2893 343 700 Fax: +44 (0) 2893 323 232



weber.therm XM

NOTES: Installation to comply with **Weber** printed instructions / for 'as specified' items refer to contract documents



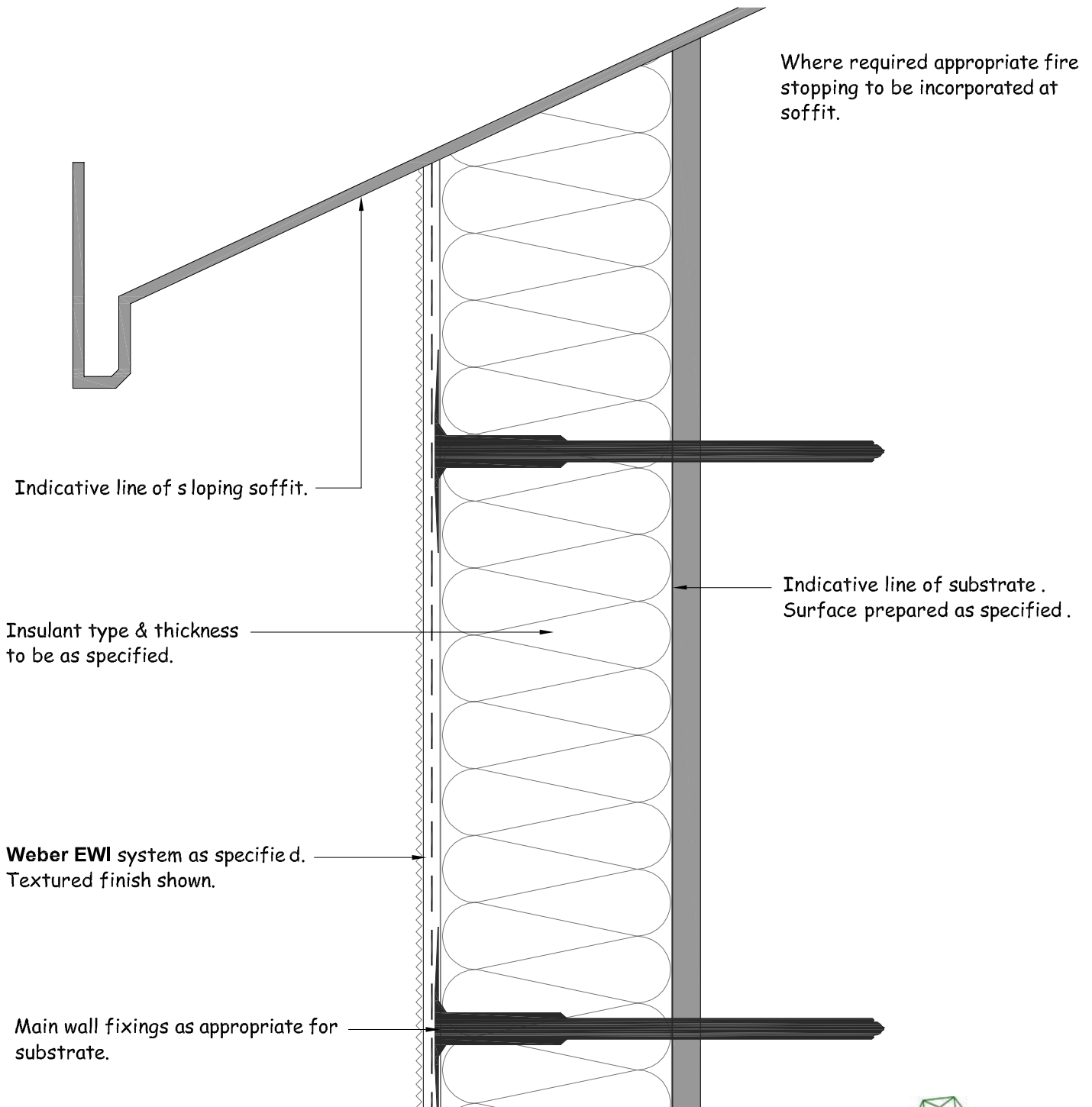
CERTIFICATE NO. 06/0260

CLIENT	Library	Date	06/03/09	Scale	1:2
PROJECT	Typical Details	Ref			
DWG TITLE	Detail Section - Projecting Eaves/Verge	Drawn	KJG	Checked	IC
		No	K-11-01a		

Saint-Gobain Weber Limited

GB/Head Office: Dickens House, Enterprise Way, FLITWICK, Bedford MK45 5BY
Ireland: The Old Paper Mill, BALLYCLARE, Co. Antrim, NI BT39 9EB

Tel: + 44 (0)1525 718 877 Fax: +44 (0) 1525 718 988
Tel: + 44 (0)2893 343 700 Fax: +44 (0) 2893 323 232



weber.therm XM

NOTES: Installation to comply with **Weber** printed instructions / for 'as specified' items refer to contract documents



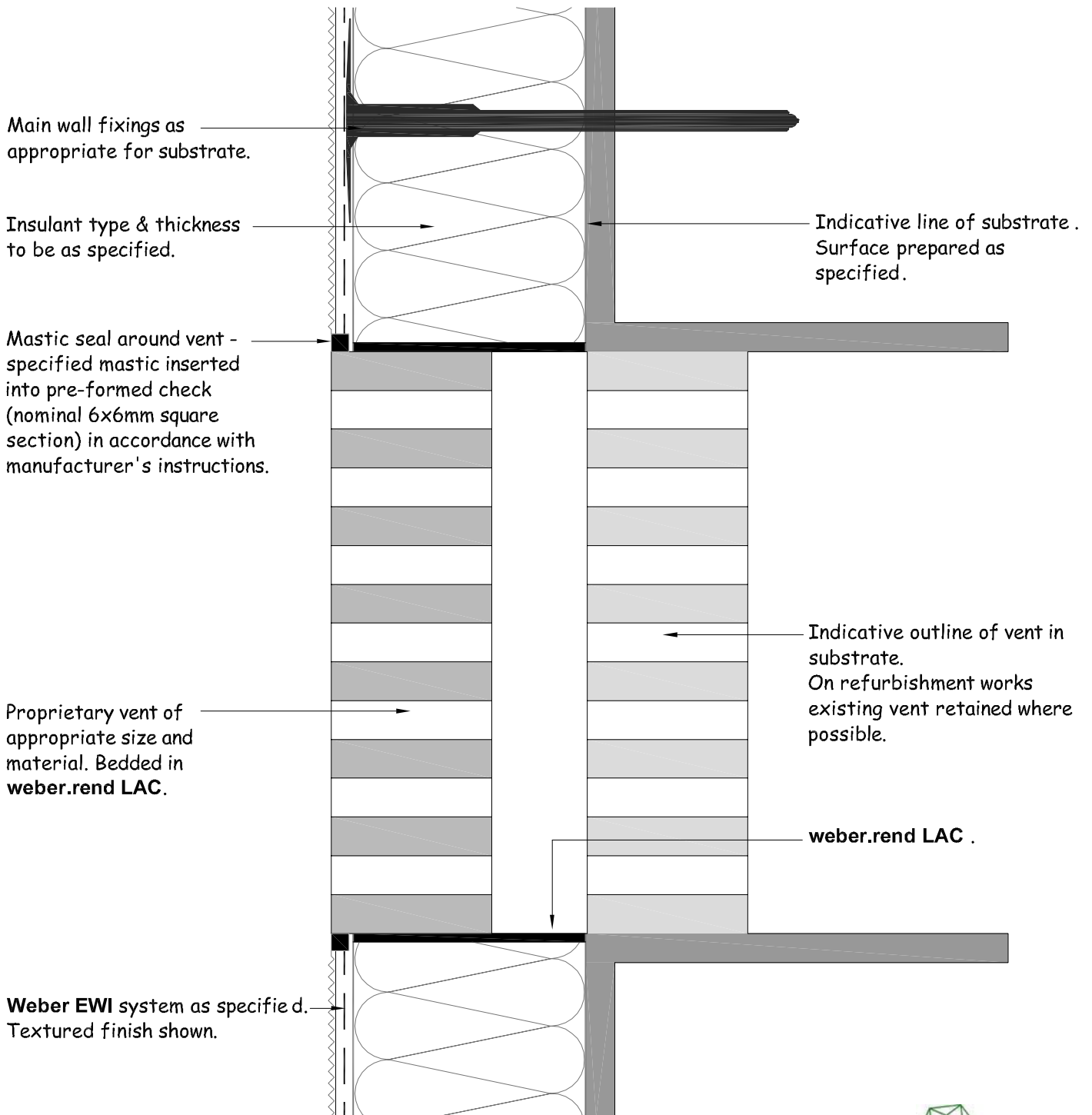
CERTIFICATE NO. 06/0260

CLIENT	Library	Date	06/03/09	Scale	1:2
PROJECT	Typical Details	Ref			
DWG TITLE	Detail Section - Sloping Soffit	Drawn	KJG	Checked	IC
		No	K-11-02a		

Saint-Gobain Weber Limited

GB/Head Office: Dickens House, Enterprise Way, FLITWICK, Bedford MK45 5BY
Ireland: The Old Paper Mill, BALLYCLARE, Co. Antrim, NI BT39 9EB

Tel: + 44 (0)1525 718 877 Fax: +44 (0) 1525 718 988
Tel: + 44 (0)2893 343 700 Fax: +44 (0) 2893 323 232



weber.therm XM

NOTES: Installation to comply with **Weber** printed instructions / for 'as specified' items refer to contract documents



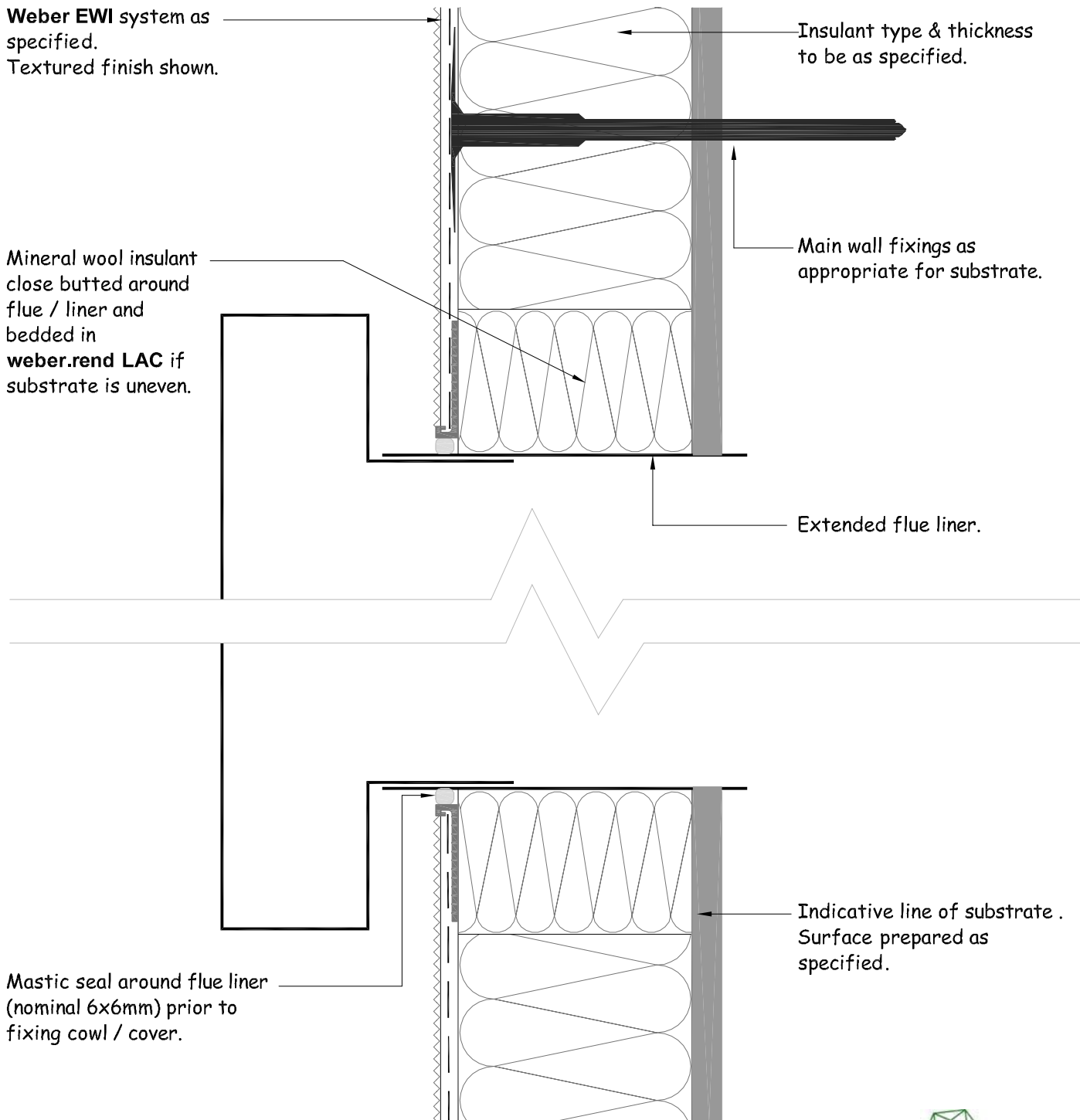
CERTIFICATE NO. 06/0260

CLIENT	Library	Date	06/03/09	Scale	1:2
PROJECT	Typical Details	Ref			
DWG TITLE	Detail Section - Ventilator	Drawn	KJG	Checked	IC
		No	K-13-01		

Saint-Gobain Weber Limited

GB/Head Office: Dickens House, Enterprise Way, FLITWICK, Bedford MK45 5BY
Ireland: The Old Paper Mill, BALLYCLARE, Co. Antrim, NI BT39 9EB

Tel: + 44 (0)1525 718 877 Fax: +44 (0) 1525 718 988
Tel: + 44 (0)2893 343 700 Fax: +44 (0) 2893 323 232



weber.therm XM

NOTES: Installation to comply with **Weber** printed instructions / for 'as specified' items refer to contract documents



CERTIFICATE NO. 06/0260

CLIENT	Library	Date	06/03/09	Scale	1:2
PROJECT	Typical Details	Ref			
DWG TITLE	Detail Section - Balanced Flue (Rectangular).	Drawn	KJG	Checked	IC
		No	K-13-11a		

Saint-Gobain Weber Limited

GB/Head Office: Dickens House, Enterprise Way, FLITWICK, Bedford MK45 5BY
Ireland: The Old Paper Mill, BALLYCLARE, Co. Antrim, NI BT39 9EB

Tel: + 44 (0)1525 718 877 Fax: +44 (0) 1525 718 988
Tel: + 44 (0)2893 343 700 Fax: +44 (0) 2893 323 232

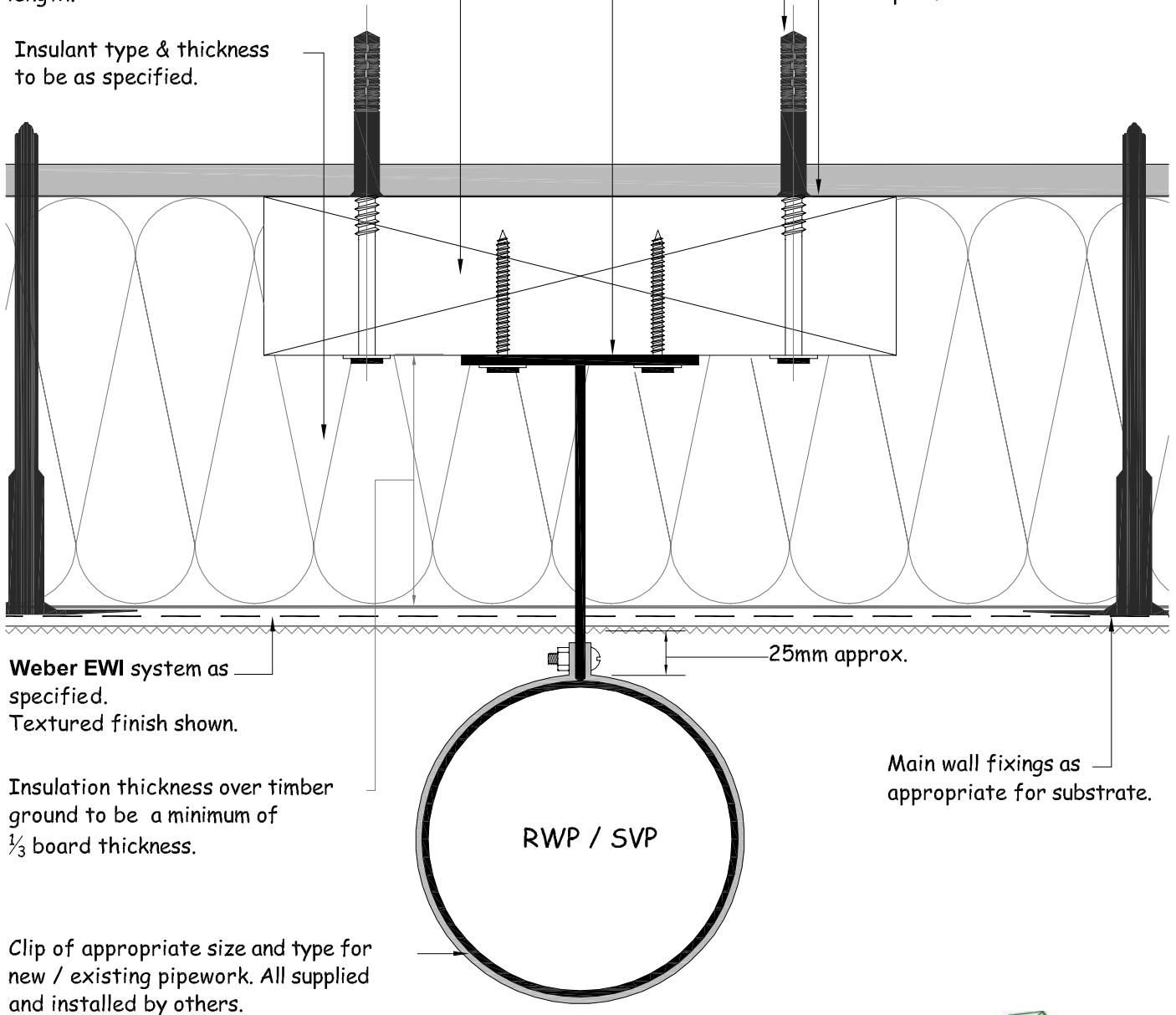
Standard Marley RT200 or similar extension back plate, fixed to wall or timber ground by others prior to system being applied.

Treated timber ground may be required dependant upon insulation thickness and extender bracket length.

Insulant type & thickness to be as specified.

Timber ground fixings (if required) as appropriate for substrate.

Indicative line of substrate. Surface prepared as specified.



weber.therm XM

NOTES: Installation to comply with **Weber** printed instructions / for 'as specified' items refer to contract documents



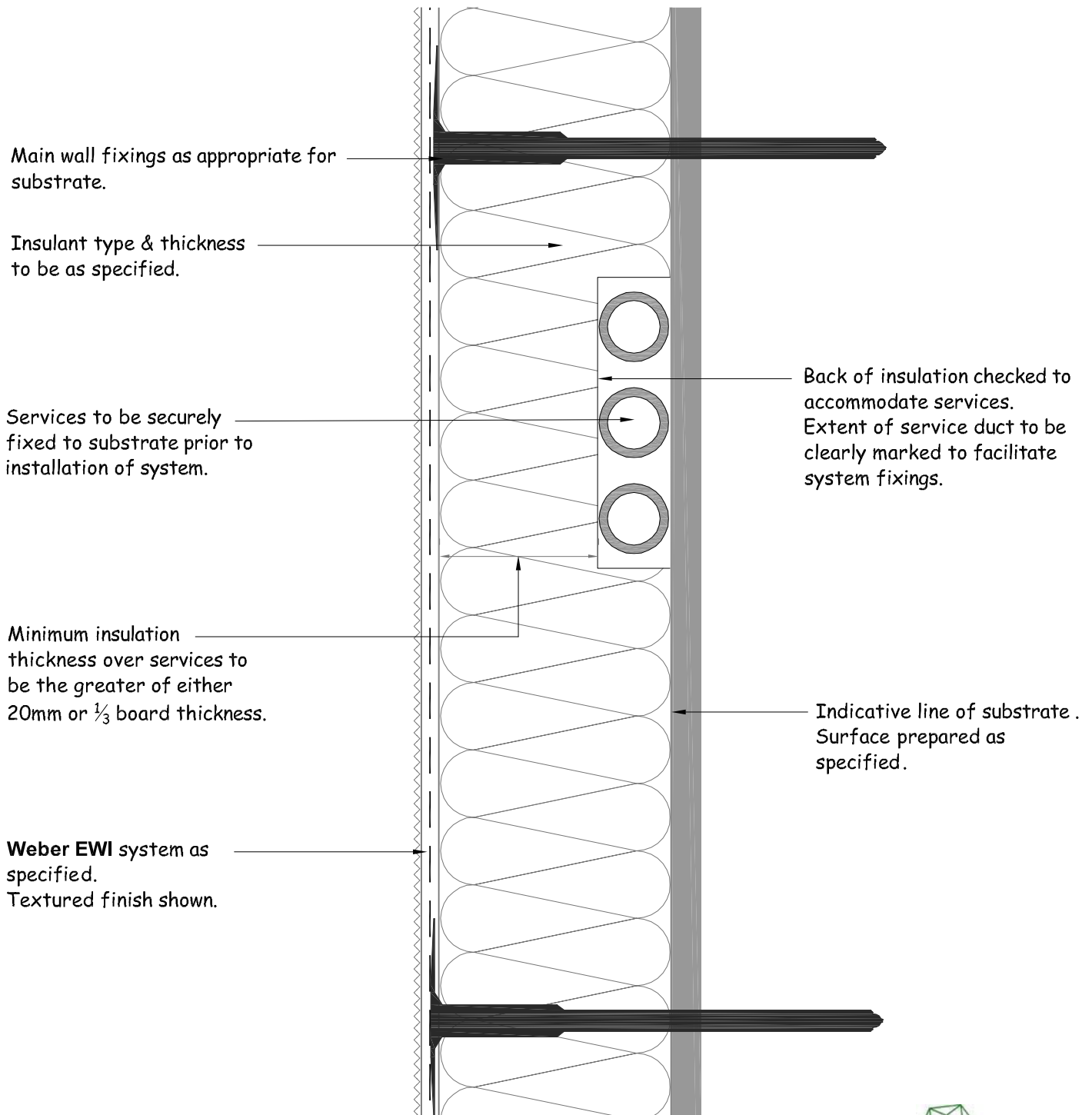
CERTIFICATE NO. 06/0260

CLIENT	Library	Date	06/03/09	Scale	1:2
PROJECT	Typical Details	Ref			
DWG TITLE	Detail Plan - Pipe Extender Bracket.	Drawn	KJG	Checked	IC
		No	K-13-41a		

Saint-Gobain Weber Limited

GB/Head Office: Dickens House, Enterprise Way, FLITWICK, Bedford MK45 5BY
Ireland: The Old Paper Mill, BALLYCLARE, Co. Antrim, NI BT39 9EB

Tel: + 44 (0)1525 718 877 Fax: +44 (0) 1525 718 988
Tel: + 44 (0)2893 343 700 Fax: +44 (0) 2893 323 232



weber.therm XM

NOTES: Installation to comply with **Weber** printed instructions / for 'as specified' items refer to contract documents



CERTIFICATE NO. 06/0260

CLIENT	Library	Date	06/03/09	Scale	1:2
PROJECT	Typical Details	Ref			
DWG TITLE	Detail Section - Service Duct.	Drawn	KJG	Checked	IC
		No	K-13-51a		

Saint-Gobain Weber Limited

GB/Head Office: Dickens House, Enterprise Way, FLITWICK, Bedford MK45 5BY
Ireland: The Old Paper Mill, BALLYCLARE, Co. Antrim, NI BT39 9EB

Tel: + 44 (0)1525 718 877 Fax: +44 (0) 1525 718 988
Tel: + 44 (0)2893 343 700 Fax: +44 (0) 2893 323 232

Weber EWI system as specified.
Textured finish shown.

Stand-off (nominal 5mm projection)

Appropriate bracket to support external fitting

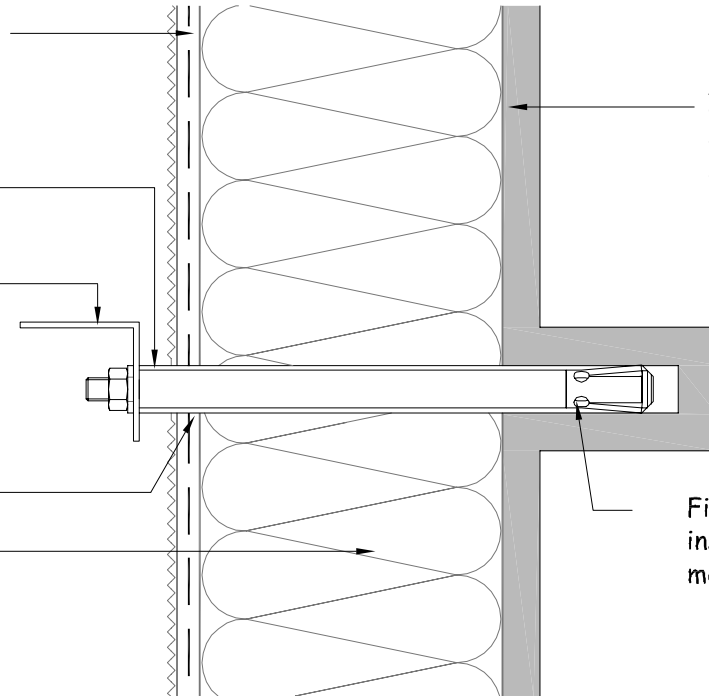
Mastic seal to drilled hole

Insulant type & thickness to be as specified.

Indicative line of substrate .
Surface prepared as specified.

Fixing to suit substrate,
installed in accordance with
manufacturer's instructions.

MASONRY SUBSTRATE



Metal tube inserted through system to create stand-off (nominal 5mm projection)

Appropriate bracket to support external fitting

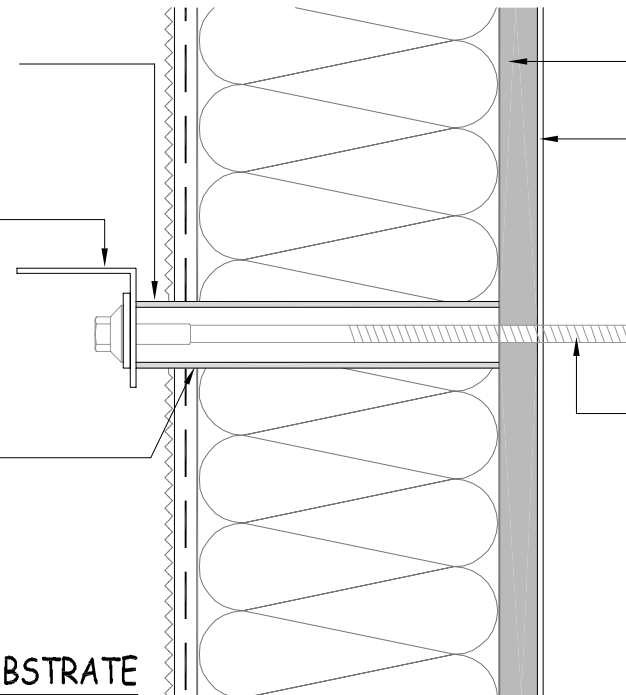
Mastic seal to drilled hole and tube.

Indicative line of sheathing.

Indicative line stud (lightweight steel or timber).

Self drilling / tapping screw fixing to secure bracket to stud through stand-off tube.

SHEATHED FRAMED SUBSTRATE



weber.therm XM

NOTES: Installation to comply with **Weber** printed instructions / for 'as specified' items refer to contract documents



CERTIFICATE NO. 06/0260

CLIENT	Library	Date	06/03/09	Scale	1:2
PROJECT	Typical Details	Ref			
DWG TITLE	Detail Section - Fixing Brackets	Drawn	KJG	Checked	IC
		No	K-13-61		

Saint-Gobain Weber Limited

GB/Head Office: Dickens House, Enterprise Way, FLITWICK, Bedford MK45 5BY
Ireland: The Old Paper Mill, BALLYCLARE, Co. Antrim, NI BT39 9EB

Tel: + 44 (0)1525 718 877 Fax: +44 (0) 1525 718 988
Tel: + 44 (0)2893 343 700 Fax: +44 (0) 2893 323 232