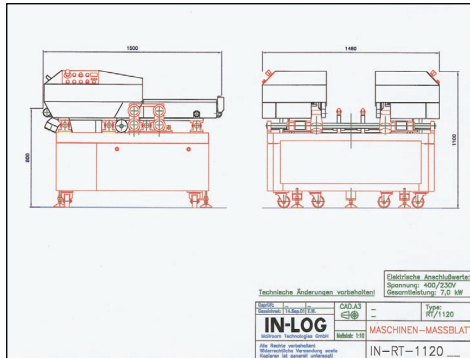
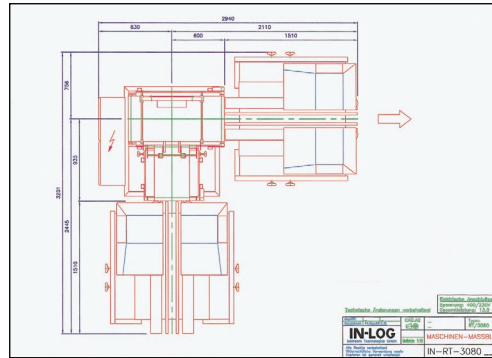


IN-LOG GmbH stands for years of experience in the planning and implementation of individual mailroom solutions.

Maßskizze zu RT/1120

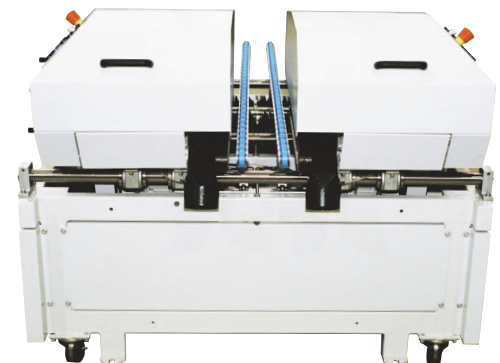


Maßskizze zu RT/3080



THE IN-LOG GMBH ROTATIONAL CUTTER GROUP COMPRISES:

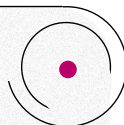
- RT/1120:** Rotational cutter for commercial machines
- RT/2120:** Rotational cutter for newspaper rotations
- RTT/1120:** Double current cutter for commercial rotations
- RTT/2120:** Double current cutter for newspaper rotations
- RT/3080:** Cutting system for 3-page trimming
- RT/4080:** Cutting system for 4-page trimming



IN-LOG

MAILROOM TECHNOLOGIES GMBH

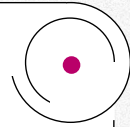
Predigergasse 3/4
 A-1010 Vienna
 Phone: ++43 (0) 1 512 98 94
 Mobil: ++43 (0) 664 42 04 777
 Fax: ++43 (0) 1 512 52 59
 E-mail: office@in-log.com
 Internet: www.in-log.com



Representation:

IN-LOG

MAILROOM TECHNOLOGIES GMBH

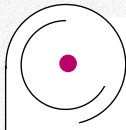


Inline Logistics RT/1120

IN-LOG

CONVEYING · DISCARD FILTERING ·

MAILROOM TECHNOLOGIES GMBH

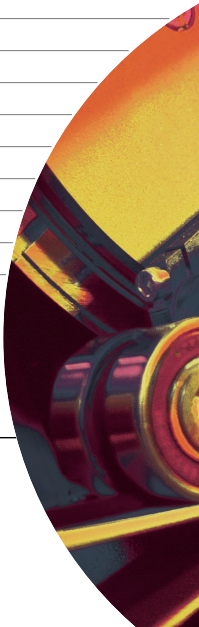


MACHINE:

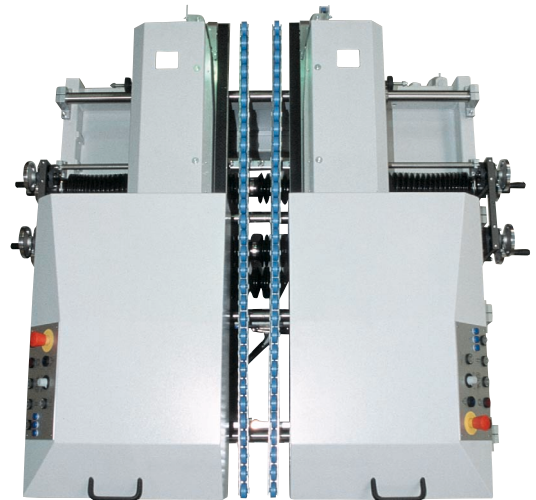
ROTARY TRIMMER

SHORT DESCRIPTION:	RT/1120
DRIVE:	Alignment AC-motor 120 Watt (2 x) Knives AC-motor 2.200 Watt (2 x) Belts AC-motor 1.500 Watt
CONTROL SYSTEM:	synchronous speed control via voltage generator, of the rotary printing press or stitching machine
ANALOG SIGNAL:	UE 0-10V DC
FROM ROTARY PRINTING PRESS	I max. 15 mA
SPEED:	adjustable from 0 - 120 m/min (60 m/min at 50 Hz)
PRODUCT THICKNESS:	Total thickness max. 15 mm
PAPER WEIGHT:	up to the thickest kind of rotary printing paper,
UNTRIMMED PRODUCT WIDTH:	min.: 100 mm max.: 550 mm
PRODUCT ALIGNMENT:	by vibrating belts adjustable during operation
TRIMMED PRODUCT WIDTH:	min.: 90 mm max.: 270 mm
OPERATION:	via two controller each left or right, adjustable from both sides of the machine
SUCTION PIPE:	∅ 100 mm
SUCTION DEVICE:	made by costumer
EXHAUST POWER:	Air volume: 900 m ³ /h Depression: 1.960 Pa (N/m ²) Air speed: 30 m/sec
INPUT POWER:	7.000 Watt
VOLTAGE:	3 x 400 V AC +PE 50/60 Hz
CONTROL VOLTAGE:	24 Volt
NOMINAL CURRENT:	25 Ampere
PRIMARY FUSE:	32 Ampere
INFEED HEIGHT:	800 mm
DELIVERY HEIGHT:	800 mm
TOTAL LENGTH:	1.500 mm
TOTAL WIDTH:	1.480 mm 1.550 mm (including hand wheels)
TOTAL HEIGHT:	1.100 mm
WEIGHT:	750 kg
COLOR:	RAL 7035

Load height and colour, as well as the technical specifications are subject to change.



With the powerful RT/1120 cutting unit, it is possible to produce up to 120,000 copies, cut on two sides, with a flexible format setup.



ROTATIONAL CUTTING IN ALL DIMENSIONS

Operator panels integrated in the covering and an optoelectric cutter monitoring system are just two of the features that make this machine so user-friendly, and they save make-ready time.

IN-LOG GmbH will put together the optimum cutter configuration for your range of applications. Extremely easy changeover and regrinding, long edge life and low noise development are the significant features of the cutter technology.

The fact that the production resources of IN-LOG GmbH are also used by satellite and aerospace technology seems to prove that comparable products simply do not have the same quality.

The alignment of your products is very dear to us; which is why we use synchronous motors for perfect alignment at high speeds.

