

---

## Vehicle Rental System

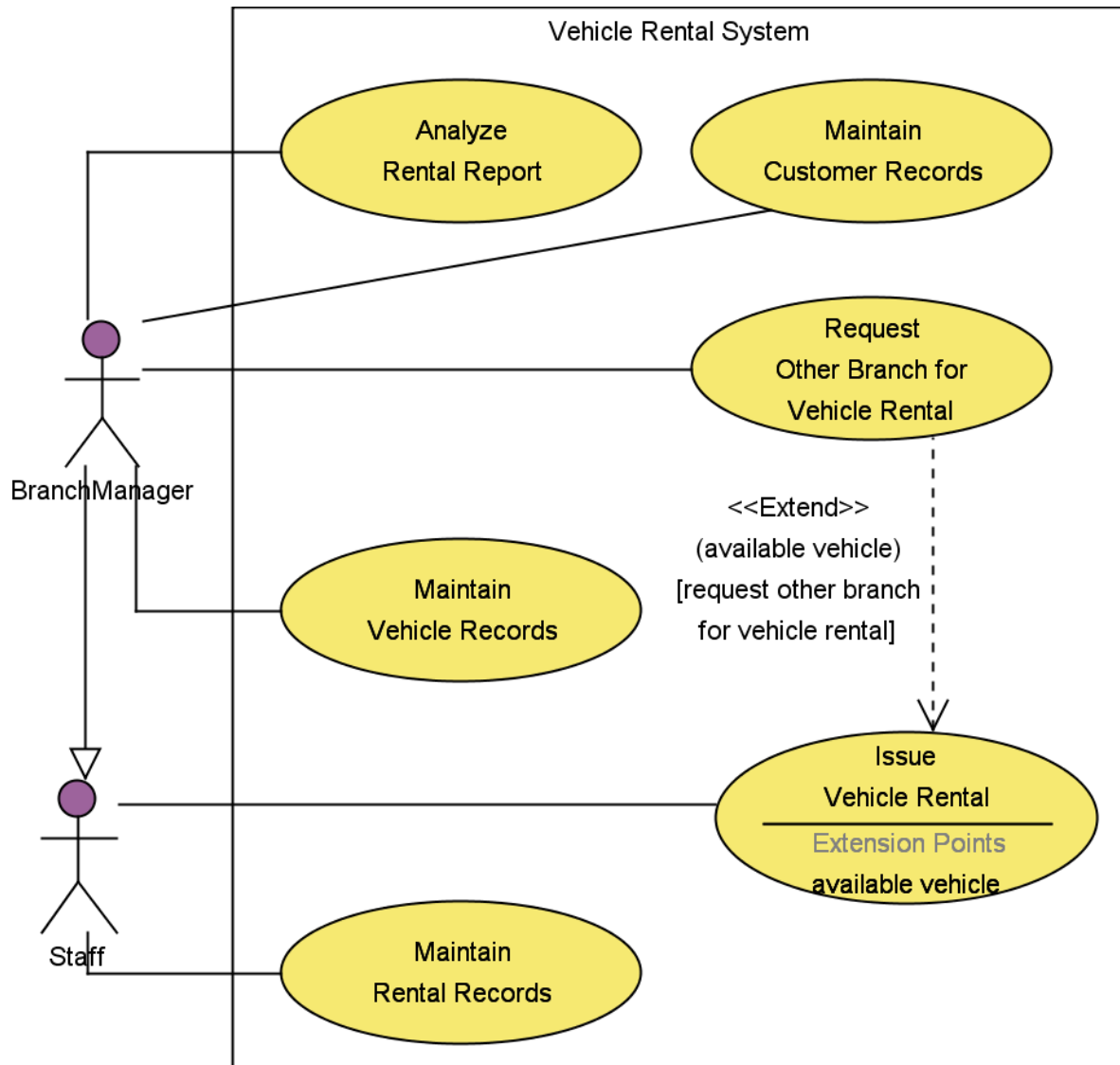
---

### Use Case Scheduling

Rank	Use Case Name	Justification
High	<a href="#">Issue Vehicle Rental</a>	This is the most important Use Case.
High	<a href="#">Maintain Rental Records</a>	Rental Records are very important to the company.
Medium	<a href="#">Maintain Vehicle Records</a>	The risk for develop vehicle record maintenance system is very low.
Medium	<a href="#">Maintain Customer Records</a>	The risk for develop customer record maintenance system is very low.
Low	<a href="#">Request Other Branch for Vehicle Rental</a>	It is not a critical services.
Low	<a href="#">Analyze Rental Report</a>	It is not a critical services.

# Vehicle Rental System

## VehicleRentalSystem



### Documentation

#### Diagram Content Summary

- [Vehicle Rental System](#)
- [Issue Vehicle Rental](#)
- [Request Other Branch for Vehicle Rental](#)
- [Analyze Rental Report](#)
- [Maintain Vehicle Records](#)
- [Maintain Rental Records](#)

---

# Vehicle Rental System

---



[Maintain Customer Records](#)

[Staff](#)

[BranchManager](#)

## Diagram Content Detail



**UseCase** Issue Vehicle Rental

**Rank :** High

**Parent :** [Vehicle Rental System](#)

**Extended by**

[Request Other Branch for Vehicle Rental](#)

**Extension Point**

**Name :** available vehicle

**Communication Link** [communicationlink](#) to [Staff](#)



**UseCase** Request Other Branch for Vehicle Rental

### Use Case Extends Hierarchy

Issue Vehicle Rental

|

+--Request Other Branch for Vehicle Rental

**Rank :** Low

**Parent :** [Vehicle Rental System](#)

**Extend from**

[Issue Vehicle Rental](#)

**Communication Link** [communicationlink](#) to [BranchManager](#)



**UseCase** Analyze Rental Report

**Rank :** Low

**Parent :** [Vehicle Rental System](#)

**Communication Link** [communicationlink](#) to [BranchManager](#)



**UseCase** Maintain Vehicle Records

**Rank :** Medium

---

## Vehicle Rental System

---

Parent : [Vehicle Rental System](#)

Communication Link [communicationlink](#) to [BranchManager](#)

### UseCase Maintain Rental Records

Rank : High

Parent : [Vehicle Rental System](#)

Communication Link [communicationlink](#) to [Staff](#)

### UseCase Maintain Customer Records

Rank : Medium

Parent : [Vehicle Rental System](#)

Communication Link [communicationlink](#) to [BranchManager](#)

Sub-diagrams

[Maintain Customer Records Activity Diagram](#)

### Use Case Description

<b>Use case ID</b>	UC 01		
<b>Super Use case</b>	nil		
<b>Brief description</b>	This use case is for maintaining customer record. After user login, he can choose to add new customer, update existing customer's information, also delete customer from the database. After the user has perform one action, he can choose to perform another one, or simply exit.		
<b>Preconditions</b>	Must login first		
<b>Flow of Event</b>			
		<b>Actor input</b>	<b>System response</b>
	0	Request update customer information	
	1		Ask for login
	2	Login information	
	3		Ask for select action
	4	selected action	
	5	perform action	
6	logout		

---

# Vehicle Rental System

---



**Actor** Staff

## Subclasses

[BranchManager](#)

**Communication Link** [communicationlink](#) to [Issue Vehicle Rental](#)

**Communication Link** [communicationlink](#) to [Maintain Rental Records](#)



**Actor** BranchManager

## Generalization Hierarchy

Staff

|

+--BranchManager

## Super Class

[Staff](#)

**Communication Link** [communicationlink](#) to [Analyze Rental Report](#)

**Communication Link** [communicationlink](#) to [Maintain Vehicle Records](#)

**Communication Link** [communicationlink](#) to [Maintain Customer Records](#)

**Communication Link** [communicationlink](#) to [Request Other Branch for Vehicle Rental](#)



**System** Vehicle Rental System

## Children:

[Issue Vehicle Rental](#), [Request Other Branch for Vehicle Rental](#), [Analyze Rental Report](#), [Maintain Vehicle Records](#), [Maintain Rental Records](#), [Maintain Customer Records](#)



## Communication Link

### Communication Link End From

Element : [BranchManager](#)

### Communication Link End To

Element : [Analyze Rental Report](#)



## Communication Link

### Communication Link End From

Element : [BranchManager](#)

### Communication Link End To

Element : [Maintain Vehicle Records](#)

---

## Vehicle Rental System

---

### Communication Link

**Communication Link End From**

Element : [Maintain Rental Records](#)

**Communication Link End To**

Element : [Staff](#)

### Communication Link

**Communication Link End From**

Element : [Maintain Customer Records](#)

**Communication Link End To**

Element : [BranchManager](#)

### Communication Link

**Communication Link End From**

Element : [Request Other Branch for Vehicle Rental](#)

**Communication Link End To**

Element : [BranchManager](#)

### Communication Link

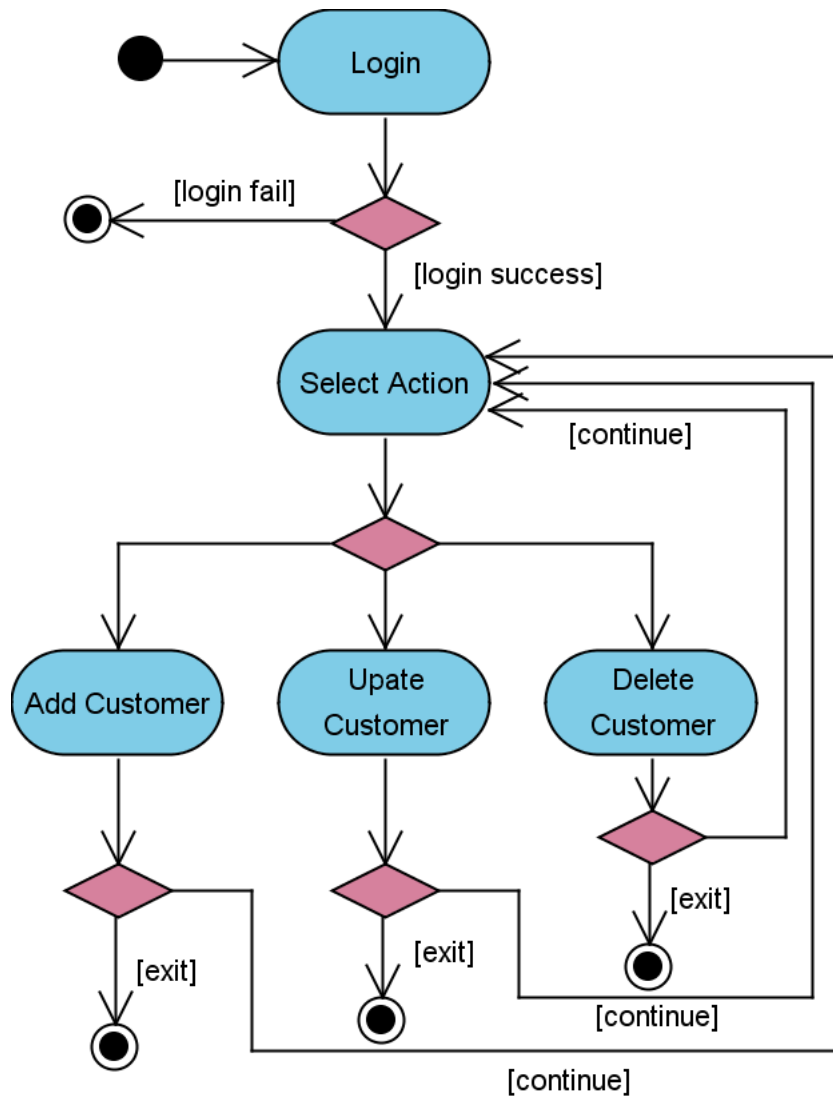
**Communication Link End From**

Element : [Staff](#)

**Communication Link End To**

Element : [Issue Vehicle Rental](#)

Maintain Customer Records Activity Diagram



Documentation






Diagram Content Summary

- InitialState
- Login
- Select Action
- Add Customer
- Uplate Customer
- Delete Customer
- Decision7

---

## Vehicle Rental System

---

-  [Decision8](#)
-  [Decision9](#)
-  [Decision10](#)
-  [Decision11](#)
-  [FinalState](#)
-  [FinalState5](#)
-  [FinalState6](#)
-  [FinalState7](#)

### Diagram Content Detail

 **Initial State** [InitialState](#)

Transition link to [Login](#)

Transition link to [Login](#)

 **Action State** [Login](#)

Transition link to [Decision8](#)

Transition link to [Decision8](#)

Transition link from  
[InitialState](#)

 **Action State** [Select Action](#)

Transition link to [Decision7](#)

Transition link to [Decision7](#)

Transition link from  
[Decision11](#), [Decision10](#), [Decision9](#), [Decision8](#)

 **Action State** [Add Customer](#)

Transition link to [Decision9](#)



---

## Vehicle Rental System

---

Transition link to [Decision9](#)

Transition link from

[Decision7](#)

 **Action State** Upate Customer

Transition link to [Decision10](#)

Transition link to [Decision10](#)

Transition link from

[Decision7](#)

 **Action State** Delete Customer

Transition link to [Decision11](#)

Transition link to [Decision11](#)

Transition link from

[Decision7](#)

 **Decision Point** Decision7

Transition link to [Add Customer](#)

Transition link to [Upate Customer](#)

Transition link to [Delete Customer](#)

Transition link to [Add Customer](#)

Transition link to [Upate Customer](#)

Transition link to [Delete Customer](#)

Transition link from

[Select Action](#)

 **Decision Point** Decision8

---

## Vehicle Rental System

---

Transition link [login fail] to [FinalState](#)

Transition link [login success] to [Select Action](#)

Transition link [login success] to [Select Action](#)

Transition link [login fail] to [FinalState](#)

Transition link from

[Login](#)



**Decision Point** Decision9

Transition link [continue] to [Select Action](#)

Transition link [exit] to [FinalState7](#)

Transition link [continue] to [Select Action](#)

Transition link [exit] to [FinalState7](#)

Transition link from

[Add Customer](#)



**Decision Point** Decision10

Transition link [continue] to [Select Action](#)

Transition link [exit] to [FinalState6](#)

Transition link [continue] to [Select Action](#)

Transition link [exit] to [FinalState6](#)

Transition link from

[Upate Customer](#)



**Decision Point** Decision11

Transition link [continue] to [Select Action](#)

---

## Vehicle Rental System

---

Transition link [exit] to [FinalState5](#)

Transition link [continue] to [Select Action](#)

Transition link [exit] to [FinalState5](#)

Transition link from  
[Delete Customer](#)

 **Final State** FinalState

Transition link from  
[Decision8](#)

 **Final State** FinalState5

Transition link from  
[Decision11](#)

 **Final State** FinalState6

Transition link from  
[Decision10](#)

 **Final State** FinalState7

Transition link from  
[Decision9](#)