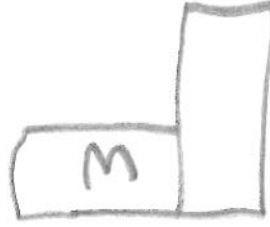
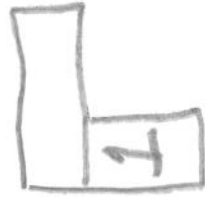
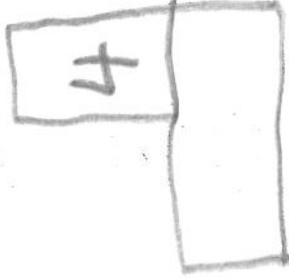


ART MB SET UP

- 1) PENS
BLACK + BLUE
- 2) Colored PENCILS
- 3) MARKERS
- 4) CRAYONS

HALLWAY

EACH STATION
IS 2 TABLES
WITH 10 CHAIRS
(40 STUDENTS).



whiteboard

TRIPOD



INSTRUCTOR
TABLES

BACK OF CLASSROOM